



1 solar panel size





Overview

A standard residential solar panel typically measures around 65 inches by 39 inches (approximately 5.4 feet by 3.25 feet). However, sizes can vary based on the panel's type, manufacturer, and specific application. Commercial solar panels are often larger, averaging 78 inches by 39.

A standard residential solar panel typically measures around 65 inches by 39 inches (approximately 5.4 feet by 3.25 feet). However, sizes can vary based on the panel's type, manufacturer, and specific application. Commercial solar panels are often larger, averaging 78 inches by 39.

Solar panel size is measured in watts (W) and indicates how much electricity the panel can produce under standard test conditions. Here's the key distinction every homeowner should understand: Most residential solar panels in 2025 come in three main configurations: The most common choice for.

The dimensions of a solar panel can significantly impact its efficiency, installation, and overall energy output. Whether you're a homeowner considering solar energy for your residence, a business owner evaluating the feasibility of solar installations, or simply a curious mind wanting to know more.

There are 3 standardized sizes of solar panels, namely: 60-cell solar panels size. The dimensions of 60-cell solar panels are as follows: 66 inches long, and 39 inches wide. That's basically a 66×39 solar panel. But what is the wattage?

That is unfortunately not listed at all. 72-cell solar panel.

Learn about the typical dimensions of a single solar panel and how its size can impact energy production and installation. Learn about the typical dimensions of a single solar panel and how its size can impact energy production and installation. When considering the installation of solar panels.

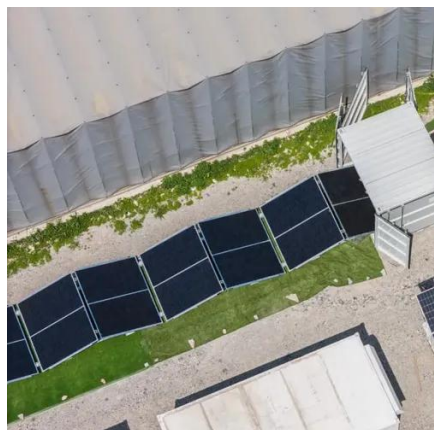
A standard solar panel size (physical dimensions) of a panel determines how many solar cells it contains, which in turn affects how much power it can produce. Large commercial solar modules pack more cells, so they outrun smaller portable models on any solar panel size chart. MNRE (Ministry of New.



The dimensions of solar panels, which typically depend on their configuration, play a crucial role in addressing these worries. Standard 60-cell modules measure approximately 39 inches by 66 inches, while 72-cell modules are around 39 inches by 77 inches. Recognizing these sizes is essential for.



1 solar panel size



[How Big is 1 Solar Panel? Size, Benefits, and More](#)

Discover how big 1 solar panel is, its benefits, challenges, and what you need to know for effective solar energy solutions.

[Solar Panel Size Guide , Best Panel Size for Your ...](#)

Learn how to choose the ideal solar panel size for your home. Get expert tips, standard dimensions, and a size chart to simplify your ...



Understanding Solar Panel Dimensions In 2025: A Complete Size ...

Understanding solar panel dimensions is crucial for planning your solar system installation, maximizing efficiency, and ensuring compatibility with your available space. In this ...

[Standard Solar Panel Sizes And Wattages \(100W-500W ...](#)

To bridge that gap of very useful knowledge needed, we have compared and averaged the sizes of 100-watt to 500-watt solar panels



available on the market. The goal here is to get to the ...



Detailed Guide to Solar Panel Size & Dimensions

Choosing the proper system is not only about the solar panel dimensions. You should also consider wattage, number of cells, layout ...

How Large is One Solar Panel? Key Factors and ...

When considering how large is one solar panel, a standard 60-cell module measures approximately 39 inches by 66 inches (about ...



Standard Solar Panel Sizes And Wattages (100W ...

To bridge that gap of very useful knowledge needed, we have compared and averaged the sizes of 100-watt to 500-watt solar panels available on the ...





How Big Is a Single Solar Panel?

When considering the installation of solar panels, understanding their size is crucial for energy production and logistical planning. A standard residential solar panel typically ...



[How Large is One Solar Panel? Key Factors and Calculations](#)

When considering how large is one solar panel, a standard 60-cell module measures approximately 39 inches by 66 inches (about 3.25 feet by 5.5 feet), while the larger ...

[Solar Panel Size & Dimensions Guide 2025 . Complete Specs](#)

In this comprehensive guide, you'll learn everything you need to know about solar panel sizing, from standard dimensions to weight considerations, helping you determine the ...



[Understanding Solar Panel Dimensions In 2025: A ...](#)

Understanding solar panel dimensions is crucial for planning your solar system installation, maximizing efficiency, and ensuring ...





[What is the Size of a Standard Solar Panel and Its Impact?](#)

What is the Standard Size of a Solar Panel? The typical size of a solar panel is approximately 65 inches by 39 inches (about 1.65 meters by 1 meter). This measurement ...



[Detailed Guide to Solar Panel Size & Dimensions](#)

Choosing the proper system is not only about the solar panel dimensions. You should also consider wattage, number of cells, layout possibilities, and energy consumption. ...

[standard solar photovoltaic panel sizes explained](#)

What is the most common residential solar photovoltaic panel size I will encounter? The standard residential solar photovoltaic panel size you'll see most often is based on a 60 ...



[Solar Panel Size Guide , Best Panel Size for Your Roof](#)

Learn how to choose the ideal solar panel size for your home. Get expert tips, standard dimensions, and a size chart to simplify your solar decisions.



Contact Us

For inquiries, pricing, or partnerships:

<https://www.sccd-sk.eu>

Phone: +32 2 808 71 94

Email: info@sccd-sk.eu

Scan QR code for WhatsApp.

