



# 12v50w solar panel directly connected to inverter





## Overview

---

**Direct Connection:** It is technically possible to connect an inverter directly to a solar panel, but it is not recommended without proper system design. **Voltage Compatibility:** Ensure the inverter's input voltage range matches the output voltage of the solar panel for safe operation.

**Direct Connection:** It is technically possible to connect an inverter directly to a solar panel, but it is not recommended without proper system design. **Voltage Compatibility:** Ensure the inverter's input voltage range matches the output voltage of the solar panel for safe operation.

It's appealing to just connect solar panels directly to an inverter, and bypass the safer and more expensive charge controller. Solar panels produce a type of electricity called direct current (DC), and most homes and the power grid run on a form known as alternating current (AC). And that's what.

In this article, we'll cover how to connect solar panels to inverter yourself and why you should add it in the first place. **Charge controller to battery:** Connect the charge controller to the battery using appropriately sized wires, matching positive and negative terminals, and ensuring proper.

There's a common question among solar energy enthusiasts: can you connect an inverter directly to a solar panel?

Understanding the relationship between these components is crucial for maximizing the efficiency of your solar energy system. In this post, we'll explore the compatibility of inverters.

Connecting solar panels to a 12V battery and inverter needs careful steps. This ensures the system works well and stays safe. Follow the right steps to avoid harm and get more energy. A good system lowers electricity bills and cuts carbon pollution. This is helpful in summer when gas plants work.

Connecting a solar panel to an existing inverter requires careful consideration of the compatibility and specifications of both the solar panel and the inverter. Here is a detailed guide with technical terms: The first step is to ensure compatibility between the solar panel and the inverter. Key.



While a truly direct connection without any other components is generally not recommended and can be unsafe, there are specific scenarios and essential tools that allow you to effectively link your solar panels to power-generating devices that contain an inverter. Let's demystify this. Most.



## 12v50w solar panel directly connected to inverter

---



### [Can I connect an inverter directly to a solar panel](#)

A: While it is technically possible to connect an inverter directly to a solar panel, it is not recommended. Solar panels produce DC (direct current) electricity, and inverters are ...

### [how to hook 12v inverter to solar panel](#)

Connecting a 12V inverter to a solar panel is a practical way to convert the direct current (DC) electricity generated by the solar panel into alternating current (AC) electricity, ...



### **Mastering Solar Connections: Can You Connect a Solar Panel Directly ...**

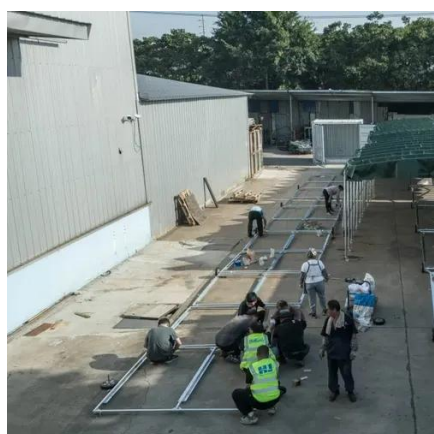
In this guide, we'll explore the nuances of connecting solar panels to inverters and highlight 10 essential connectors and adapter cables that make these connections possible ...

### [Can I Connect My Solar Panels Directly to My Inverter?](#)

While it's technically possible to connect solar panels directly to an inverter, it's not always the safest or most efficient choice. Using a charge



controller, proper wiring, and ...



### [How to Connect Solar Panel to Inverter](#)

Install your photovoltaic panels at the optimal tilt and direction (usually north-facing in the Southern Hemisphere). There are two wiring configurations to choose from:

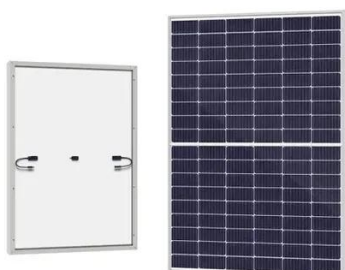
### **How to connect solar panels to 12 volt batteries and inverters**

Learn how to safely connect solar panels to 12V batteries and inverters. Follow step-by-step instructions for efficient energy storage and usage.



### **How to connect solar panels to inverter and battery in 3 steps**

If you want to build a solar system for your RV, boat or off-grid house, you'll almost always need an inverter. In this article, we'll cover how to connect solar panels to inverter ...





## How to connect a solar panel to an existing inverter?

If the inverter is designed for direct solar input (as in hybrid or grid-tie inverters), you can connect the solar panel directly to the inverter, provided the voltage and current ...



## How to Connect Solar Panel to Inverter: Few Easy Steps

Connecting solar panels to inverters significantly impacts energy efficiency. Proper installation can maximize the performance of your solar setup. Familiarity with industry ...

## How to connect a solar panel to an existing inverter?

If the inverter is designed for direct solar input (as in hybrid or grid-tie inverters), you can connect the solar panel directly to the inverter, ...

### FLEXIBLE SETTING OF MULTIPLE WORKING MODES



## **How to connect solar panels to inverter and battery in 3 steps**

A: While it is technically possible to connect an inverter directly to a solar panel, it is not recommended. Solar panels produce DC ...





## [Solar Panel & Power Inverter: Get Stable Power The Right Way](#)

When putting together a solar power system for something like an RV, boat, or a small cabin, you might wonder if you can connect a solar panel directly to a power inverter to ...





## Contact Us

---

For inquiries, pricing, or partnerships:

<https://www.sccd-sk.eu>

Phone: +32 2 808 71 94

Email: [info@sccd-sk.eu](mailto:info@sccd-sk.eu)

Scan QR code for WhatsApp.

