



136kw Sunshine inverter 485 series connection





136kw Sunshine inverter 485 series connection



Grid-connected PV Inverter

Please take appropriate anti-static measure.
Please install where children can not touch. The steps to start the inverter:1) switch on the AC side circuit breaker, 2) Switch on the DC side ...

Adaptors & Wiring , Deye/Sunsynk

The newer inverters have a combined RS485 and CAN-BUS port. If your battery is already using the port for its CAN-BUS communications, you need to split the cable to connect your RS485 ...



User Manual

Plug a communication module into the inverter to establish a connection between the inverter and the smartphone or web pages. The communication module can be a WiFi module, or 4G module.

Installation Manual

The cable gland provides a sturdy, tightly sealed connection of the cables to the inverter enclosure. The cable gland also protects the inverter from dust and moisture intrusion.



[GWL SUN Series Installation And Operation Manual](#)

WARNING: Before installing the Sunshine Grid Tie Inverter, read all instructions and cautionary markings in the user manual, on the Sunshine ...



[GWL SUN Series Installation And Operation Manual](#)

WARNING: Before installing the Sunshine Grid Tie Inverter, read all instructions and cautionary markings in the user manual, on the Sunshine Grid Tie Inverter, and on the photovoltaic array.



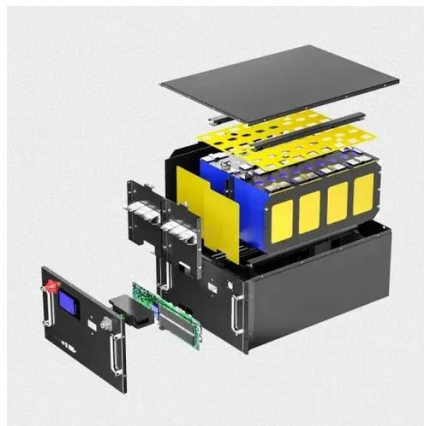
Grid-connected PV Inverter

1. Introduction 1.1 Appearance Introduction On-grid the grid. Its appearance inverter can convert solar panel DC power into AC power SUN- K-G P -EU-AM, is shown below. ...



Solar Hybrid Inverter

Before installing and adjusting the wiring of the Inverter, be sure to disconnect the fuse or circuit breaker near the PV array, the mains supply and the battery terminal.



RS485 Communication Checklist

In the case of trouble scanning for all inverters, please check the RS485 wiring for voltage and polarity: The voltage across RS485A+ and RS485B- should be between 3 and 4.6 VDC

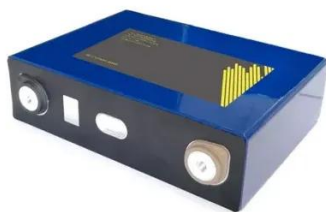
[RS485 Communications Troubleshooting Guide](#)

A Series Inverter: Set the 0/1 switch in the 0 (OFF) position and remove the top cover. Press and hold the 3/Enter button found above the LCD for a few seconds until you see a 5-second ...



[136kw Sunshine inverter 485 series connection](#)

The purpose of the RS485 wiring in Sungrow SH**RS and SH**RT inverters is to allow multiple inverters to be controlled from one energy meter. As the single and 3-phase configurations are ...





Contact Us

For inquiries, pricing, or partnerships:

<https://www.sccd-sk.eu>

Phone: +32 2 808 71 94

Email: info@sccd-sk.eu

Scan QR code for WhatsApp.

