



250kW Photovoltaic Energy Storage Container for Cement Plants





Overview

As a standardized “energy package,” each container provides 250kW/430kWh, and up to five units can be paralleled, enabling capacity expansion from 100–1000kW / 200–2000kWh. This containerized ESS supports peak shaving, backup power, electricity cost reduction, and power.

As a standardized “energy package,” each container provides 250kW/430kWh, and up to five units can be paralleled, enabling capacity expansion from 100–1000kW / 200–2000kWh. This containerized ESS supports peak shaving, backup power, electricity cost reduction, and power.

The Bluesun 20-foot BESS Container is a powerful energy storage solution featuring battery status monitoring, event logging, dynamic balancing, and advanced protection systems. It also includes automatic fire detection and alarm systems, ensuring safe and efficient energy management. The 20FT.

The BSI-Container-20FT-250KW-860kWh is a robust, turnkey industrial energy storage solution engineered for rapid deployment and high-density energy performance. Housed in a 20-foot container, this system integrates solar PV, energy storage, and advanced control components into a single unit, making.

High performance, energy storage system using advanced battery and inverter technology, providing charging and discharging efficiency up to 90% or more. Energy saving and cost reduction, helping users to realize energy saving and reduce power costs through peak and valley tariff arbitrage and.

This product is a 250kW/520kWh industrial and commercial integrated energy storage cabinet utilizing Lithium Iron Phosphate (LFP) battery cells. It is highly integrated within a prefabricated container (20ft/40ft options available), combining the PCS, BMS, EMS, photovoltaic interfaces, diesel.

Greenwatt high-efficiency photovoltaic system with integrated energy storage for uninterrupted power supply and cost savings. it boost sustainability with our 150KW 250KW 500KW industrial solar storage system - reliable, scalable, and perfect for reducing energy costs in commercial applications.

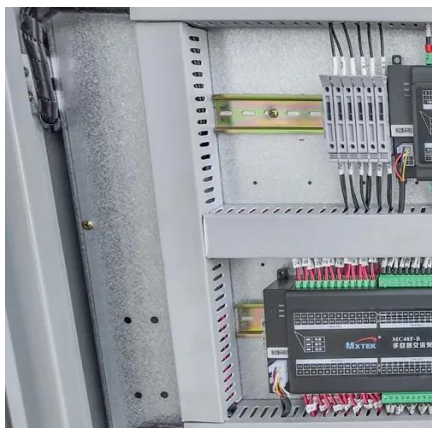
As an innovator in power technology, Chennuo Electrical Technology Group proudly



introduces the 250kW/500kWh Integrated Container Energy Storage System. This is a massive "power bank" designed specifically for high-energy consumption scenarios, integrating advanced power electronics with robust.



250kW Photovoltaic Energy Storage Container for Cement Plants



[Energy storage system container 1MWh 250kw LifePo4 \(LFP\) ...](#)

Hvpack energy storage system container uses standard battery modules, PCS modules, BMS, EMS and other systems to form standard containers to build large-scale grid-side energy ...

Castrol Edge 5W-30 Full Synthetic Motor Oil, Reduces Friction

EDGE 5W-30 Full Synthetic Motor Oil delivers exceptional performance with advanced wear protection that is three times better at reducing friction, ensuring smoother engine operation ...



[150KW-500KW Industrial Solar System for Factory , Greenwatt](#)

The system cut energy bills and carbon footprints. Our solar energy storage system delivers stable power for factories, warehouses, and large facilities.

[250 kW 575 kWh Battery Energy Storage System , Aggreko US](#)

A complete mid-node battery energy storage system (BESS) with everything you need included in one container - Our 250 kW/575 kWh battery

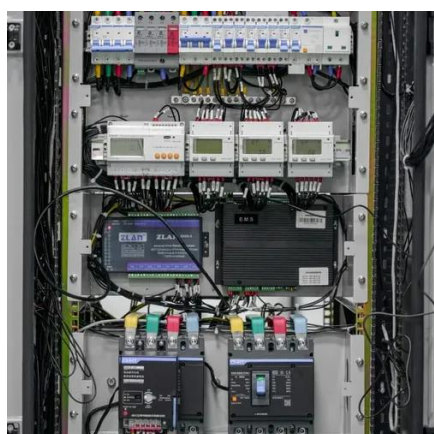


solutions are used across a wide variety of ...



Powering Large-Scale Industry: A Deep Dive into Chennuo's ...

The Chennuo Electrical 250kW/500kWh Integrated Container Energy Storage System, with its $\geq 97\%$ maximum conversion efficiency and industrial-grade reliability, is ...



[CASTROL EDGE High Mileage 5W-30 Advanced Full Synthetic ...](#)

Castrol EDGE High Mileage 5W-30 is an advanced full synthetic motor oil that is specifically designed for vehicles with over 75,000 miles.



I Tested Castrol Edge 5W 30 and Here's Why It's the Ultimate ...

John here and let me tell you, I am impressed with Castrol Edge 5W-30 LL Advanced Full Synthetic Motor Oil. As someone who drives a diesel vehicle, I was thrilled to find out that this ...





Castrol Edge 5w30 Hyspec Titanium Fst Full Synthetic Engine Oil ...

Castrol EDGE 5W-30 is suitable for use in automobile, gasoline and diesel engines where the manufacturer recommends an ACEA C3, API SN or earlier specification.



[20FT Container 250KW 803KWH Battery Energy Storage System](#)

Equipped with automatic fire detection and alarm systems, the 20FT Container 250kW 860kWh Battery Energy Storage System is the ultimate choice for secure, scalable, and efficient energy ...

Container Energy Storage System EMS Control 250kW Output ...

Sunark's 250kW energy storage system features a 500kWh LiFePO₄ battery module, known for its stable discharge platform, excellent safety, and long cycle life.



[Castrol EDGE Full Synthetic Engine Oil 5W-30 5 Quart](#)

Castrol® EDGE® 5W-30 is an advanced full synthetic motor oil and the optimal choice for drivers who want the best combination of wear protection, viscosity control and thermal stability to ...



BSI-Container-20FT-250KW-860kWh

The BSI-Container-20FT-250KW-860kWh is built to solve the challenges of remote energy access, operational continuity, and scalable storage. It ...



250KW Containerized Energy Storage

Contact us today to learn more about our containerized energy storage systems and receive a comprehensive proposal including detailed energy storage container price information for your ...

Powering Large-Scale Industry: A Deep Dive into Chennuo's 250kW...

The Chennuo Electrical 250kW/500kWh Integrated Container Energy Storage System, with its $\geq 97\%$ maximum conversion efficiency and industrial-grade reliability, is ...



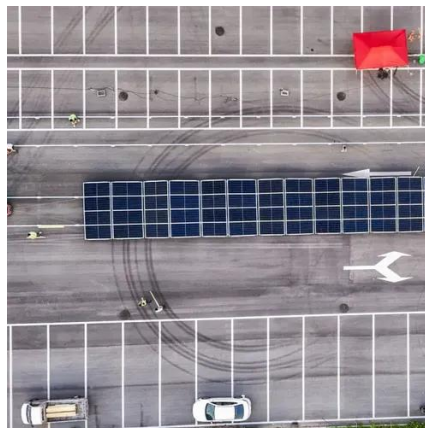
BSI-Container-20FT-250KW-860kWh

The BSI-Container-20FT-250KW-860kWh is built to solve the challenges of remote energy access, operational continuity, and scalable storage. It serves industrial and commercial ...



250KW/520KWh C& I BESS with Solar and GEN

This product is a 250kW/520kWh industrial and commercial integrated energy storage cabinet utilizing Lithium Iron Phosphate (LFP) battery cells.

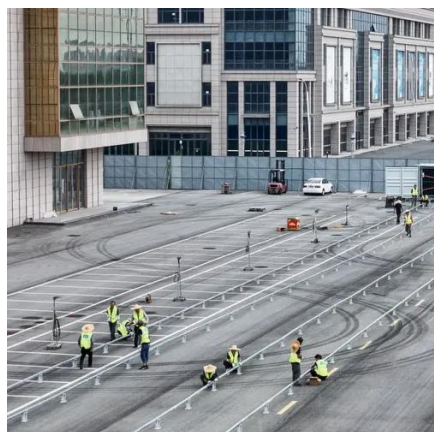


BP Castrol Diesel Edge 5W-30 , SCL

Castrol 5W30 is our strongest and most advanced range of engine oils. Castrol EDGE 5W-30 C3 is suitable for use in automotive gasoline and diesel engines where the manufacturer ...

250kW On-Grid Energy Storage Solution Modular Container ESS ...

As a standardized "energy package," each container provides 250kW/430kWh, and up to five units can be paralleled, enabling capacity expansion from 100-1000kW / 200-2000kWh. This ...



Amazon : Castrol Edge 5w30

Castrol Edge Extended Performance 5W-30 Advanced Full Synthetic Motor Oil, 5 Quart 600+ bought in past month Add to cart



[Castrol Diesel Edge 5W-30 Technical Datasheet](#)

Castrol EDGE is our strongest and most advanced range of engine oils. Its TITANIUM FSTTM doubles its film strength preventing oil film breakdown and reducing friction.



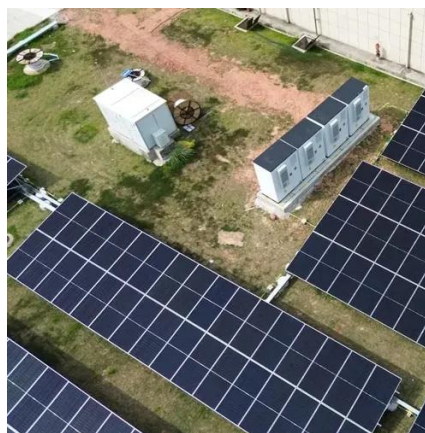
[Container Energy Storage System EMS Control ...](#)

Sunark's 250kW energy storage system features a 500kWh LiFePO₄ battery module, known for its stable discharge platform, excellent safety, and long ...



[Castrol® EDGE®: Full synthetic motor oil , Castrol® USA](#)

Castrol EDGE is one of Castrol's strongest oils and has been formulated to provide Superior Performance and Protection in 7 Critical Areas including fuel economy, high temperature ...



[250 kW 575 kWh Battery Energy Storage System](#)

A complete mid-node battery energy storage system (BESS) with everything you need included in one container - Our 250 kW/575 kWh battery ...





[Olio Castrol EDGE Professional LLIII 5W30 scheda tecnica](#)

Castrol EDGE Professional, potenziato con TITANIUM FST(TM), fornisce all'olio una straordinaria resistenza per i motori attuali che lavorano in condizioni più severe, con pressioni interne mai ...





Contact Us

For inquiries, pricing, or partnerships:

<https://www.sccd-sk.eu>

Phone: +32 2 808 71 94

Email: info@sccd-sk.eu

Scan QR code for WhatsApp.

