



250w solar panel specifications





Overview

25% cell efficiency with 20W more power than traditional panels. 80% bifaciality factor for up to 14% extra power from the rear. $-0.29\%/^{\circ}\text{C}$ temperature coefficient for improved efficiency in heat. 16 bus-bars for better energy conversion & longer lifespan.

25% cell efficiency with 20W more power than traditional panels. 80% bifaciality factor for up to 14% extra power from the rear. $-0.29\%/^{\circ}\text{C}$ temperature coefficient for improved efficiency in heat. 16 bus-bars for better energy conversion & longer lifespan.

manufacturing technology. perfect for rooftop installation. Advanced glass and solar cell surface texturing allow for excellent performance in low-light environments. Impedance matching technology eliminates mismatch losses, more power from each module bin. Certified to withstand: wind load (2400).

25% cell efficiency with 20W more power than traditional panels. 80% bifaciality factor for up to 14% extra power from the rear. $-0.29\%/^{\circ}\text{C}$ temperature coefficient for improved efficiency in heat. 16 bus-bars for better energy conversion & longer lifespan. IP68-rated & 10-Year parts and 25-Year 80%.

Fully-automated production lines and seamless monitoring of the process and material ensure the quality that the company sets as its benchmark for its sites worldwide. Plus-Sorting guarantees highest system efficiency. SolarWorld only delivers modules that have greater than or equal to the.

Canadian Solar's modules are the best in class in terms of power output and long term reliability. Our meticulous product design and stringent quality control ensure our modules deliver a higher PV energy yield in live PV system as well as in PVsyst's system simulation. Our in-house PV testing.

250W solar panels are designed with advanced technology and high-quality materials to maximize energy conversion. With their high-efficiency cells, these panels are capable of capturing more sunlight and transforming it into usable electrical energy. This translates into increased power output.

IP68 Weatherproof Build: Durable IP68 junction box and IP67 connectors for all-



weather reliability. Certified Strength: Withstand up to 2400 Pa wind and 5400 Pa snow load for dependable performance. Impact Resistant: Durable against hail up to 35 mm at speeds of 97 km/h, ensuring long-term.



250w solar panel specifications



[250W N-Type Bifacial Solar Panel , Renogy US](#)

Built with precision, this panel includes low-iron tempered glass, POE film, N-Type solar cells, a transparent backsheet, and a robust aluminum frame. These materials ensure unmatched ...

Datasheet

Specifications included in this datasheet are subject to change without notice. Electrical data without guarantee. Please confirm your exact requirement with the company representative ...



Trina Solar TSM-250PA05

Currently Trina Solar's most popular panel. Versatile and adaptable, with power output ranging from 225 to 245Wp, the TSM-PA05 is perfect for large scale installations, particularly ground ...

MEGA 250 Solar Panel , RICH SOLAR

The MEGA 250 Solar Panel delivers powerful performance and robust durability with its split-energy technology. Available in both onyx and silver frames.



[Should You Buy 250-Watt Solar Panels?](#)

Our solar panel cost and savings calculator is the fastest and easiest way to find out how many solar panels your home needs. We'll also tell you the average cost of the system and how ...



[Monocrystalline Solar Panel 250W PMS250M-60 Datasheet](#)

Advanced glass and solar cell surface texturing allow for excellent performance in low-light environments. Impedance matching technology eliminates mismatch losses, more power from ...



CS6P-P_en.cdr

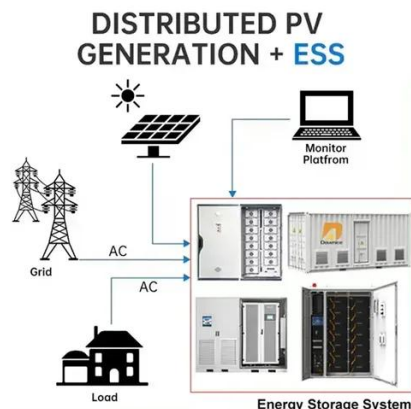
Canadian Solar's modules are the best in class in terms of power output and long term reliability. Our meticulous product design and stringent quality control ensure our modules deliver a ...





MEGA 250 Solar Panel , RICH SOLAR

The MEGA 250 Solar Panel delivers powerful performance and robust durability with its split-energy technology. Available in both onyx and ...

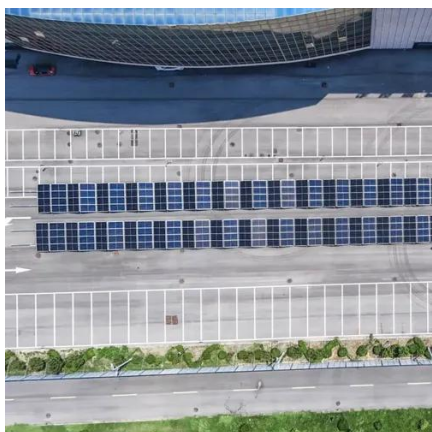


250W Solar panel specifications

Our range of solar panels are constructed from ultra-efficient polycrystalline and have been designed to provide a reliable and cost-effective alternative energy solution for applications ...

[250W N-Type Bifacial Solar Panel , Renogy US](#)

Built with precision, this panel includes low-iron tempered glass, POE film, N-Type solar cells, a transparent backsheet, ...



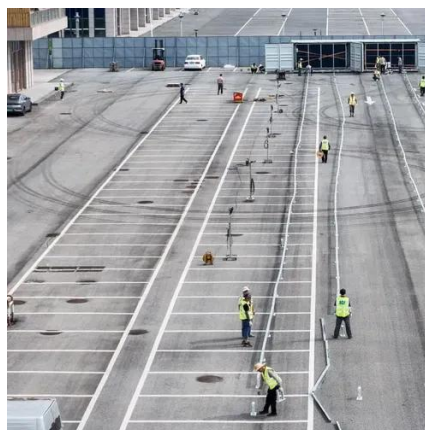
[SolarWorld Sunmodule solar panel 250 watt mono data sheet](#)

Sunmodules dedicated for the United States and Canada are tested to UL 1703 Standard and listed by a third party laboratory. The laboratory may vary by product and region. Check with ...



250w Solar Panel Datasheet - Key Specifications and Features

250W solar panels are designed with advanced technology and high-quality materials to maximize energy conversion. With their high-efficiency cells, these panels are capable of capturing more ...





Contact Us

For inquiries, pricing, or partnerships:

<https://www.sccd-sk.eu>

Phone: +32 2 808 71 94

Email: info@sccd-sk.eu

Scan QR code for WhatsApp.

