



450w double-sided double-glass color module weight





Overview

Weighing in at 21,7 kg and dimensions measuring 1800 mm (L) x 1134 mm (W) x 30 mm (H), the DAS-DH108ND-450W (BIFACIAL, BLACK PRO) solar module ensures easy and safe integration into your solar system, serving a wide array of applications effectively.

Weighing in at 21,7 kg and dimensions measuring 1800 mm (L) x 1134 mm (W) x 30 mm (H), the DAS-DH108ND-450W (BIFACIAL, BLACK PRO) solar module ensures easy and safe integration into your solar system, serving a wide array of applications effectively.

Highly-resistant black, crystal material, modernity to buildi 40C(B D)54 . Power Volta .

30 Years linear power warranty Nominal Max. Power(Pmax/W) 445 Open Circuit Voltage(Voc/V) 39.12 Short Circuit Current(Isc/A) 14.03 Operating Voltage(Vmp/V) 33.51 Operating Current(Imp/A) 13.28 Efficiency(%) 22.8 Nominal Max. Power(Pmax/W) Electrical Parameters (NMOT *) 342 Nominal Max.

◆◆ 0.4% / year) 2024 Energizer. Energizer and certain graphic designs are trademarks of Energizer Brands, LLC and related subsidiaries and are used under license by 8 Star Energy Pty Ltd. All other brand names are trademarks of their respective owners. Neither 8 Star Energy Pty Ltd nor Energizer.

The bifacial technology enables additional power generation from the back of BiMAX4 modules (up to 25%), and brings a high efficiency (up to 21.63%), which has been verified by customers and third-party testing organizations. The robust double glass construction of BiMAX4 modules not only increases.

The TALESUN TD6I72M-9BB is a high-quality bifacial dual glass solar module with a maximum power output of 450 watts that delivers exceptional performance and durability for residential solar systems. Based on bifacial PERC cell technology, it has an industry-leading high yield. With 1200 / 2500mm.

This solar module is conceptualized with meticulous engineering to achieve an impressive efficiency rating of 22.05%, ensuring optimal conversion of sunlight into usable electricity. It is specifically designed to support system voltages of up to



1500 volts, guaranteeing diverse compatibility and.



450w double-sided double-glass color module weight



[DT-M-0084 C Datasheet_Vortex S+_NEG9R.25_EN_2024_C](#)

High reliability with light double glass - Less prone to micro-cracks and scratches on the back side
-Excellent re rating, weather resistance, sustainable in harsh environments and extreme ...

[Eco Line TOPCon Glass-Glass Fullback M108R ...](#)

Eco Line TOPCon Glass-Glass Fullback M108R 450W - Solar module - Luxor Solar GmbH



[Eco Line TOPCon Glass-Glass Fullback M108R 450W](#)

Eco Line TOPCon Glass-Glass Fullback M108R 450W - Solar module - Luxor Solar GmbH



[Talesun BIPRO 450W Bifacial Dual Glass 144-Cell ...](#)

The TALESUN TD6I72M-9BB is a high-quality bifacial dual glass solar module with a maximum power output of 450 watts that delivers ...



DAS-DH108NA-EN-445-450(Black Frame)

Mechanical Parameters Cell Type N Type Module Size 1722×1134×30mm Glass Thickness 1.6mm Module Weight 20.5Kg Output Cable 4mm², cable length 1200mm(can be customized) ...



Ja Solar JAM54D40-450/LB 450 Wp double glass solar module ...

The JA Solar JAM54D40-450/LB is a bifacial double-glass solar module with a nominal power of 450 Wp. It offers higher energy yield thanks to its double-sided light absorption and is ...



[Talesun BIPRO 450W Bifacial Dual Glass 144-Cell Mono Perc](#)

The TALESUN TD6I72M-9BB is a high-quality bifacial dual glass solar module with a maximum power output of 450 watts that delivers exceptional performance and durability for residential ...





[Sunpal Bifacial 450W 460W 470W Double Glass Solar Panel](#)

The robust double glass construction of BiMAX4 modules not only increases resistance to environmental influences, but also extends the lifespan of the modules, with an annual power ...



BAUER SOLAR

The BLACK module offers HW3 hail resistance, fire protection class A, load capacity up to 620 kg/m², and double-sided glass sealing. BAUER Solar thus guarantees extremely high ...



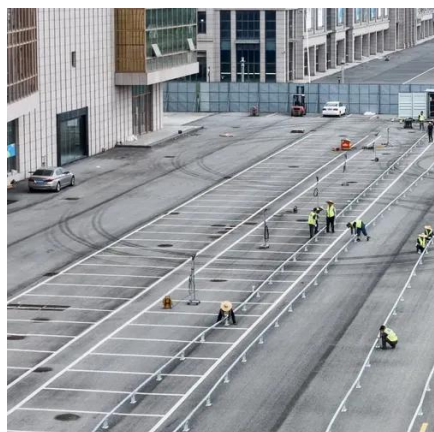
[Sunpal Bifacial 450W 460W 470W Double Glass ...](#)

The robust double glass construction of BiMAX4 modules ...



BAUER SOLAR

The BLACK module offers HW3 hail resistance, fire protection class A, ...





[430W-450W 182 N-TOPCon Pure-black Dual-glass Bifacial ...](#)

LESSO 182 N-TOPCon Pure-black Dual-glass Bifacial Module (54) Power Range 430W ~ 450W Power Output Tolerance 0W ~ +5W Maximum Efficiency 23.04% (Unit: mm)



Beam N 430-450W

4 mm² / 12 AWG Maximum mechanical test load Connector type (IEC/UL) 5400 Pa (front) / 2400 Pa (back) PV-HCB40 (Astronergy) or PV-KST4-EVO2/xy-UR, PVKBT4-EVO2/xy (Stäubli) ...

[DAS Solar DAS-DH108ND-450W \(BIFACIAL, BLACK PRO\)](#)

Weighing in at 21,7 kg and dimensions measuring 1800 mm (L) x 1134 mm (W) x 30 mm (H), the DAS-DH108ND-450W (BIFACIAL, BLACK PRO) solar module ensures easy and safe ...





Contact Us

For inquiries, pricing, or partnerships:

<https://www.sccd-sk.eu>

Phone: +32 2 808 71 94

Email: info@sccd-sk.eu

Scan QR code for WhatsApp.

