



# 50w sine wave inverter





## 50w sine wave inverter

---



### [Dc To Ac Power Inverter Converter, 50W - Pyle USA](#)

The Pyle Plug in Car 50 Watt 12v DC to 115 Volt AC Power Inverter w/ Modified Sine Wave - Output Voltage: 100V-120V - Frequency: 60 +/- 2Hz  
Waveform: Modified Sine Wave - Input ...

### **IIS 50 I Emergency Micro-Inverter**

The IOTA IIS 50 I is a UL Listed sine wave output inverter designed to provide power to the designated emergency lighting fixture. In a power ...



### **IOTA IIS-50-I Micro Inverter , 50W**

The IOTA IIS-50-I is a 50 Watt sine wave output inverter designed to provide power to LED, fluorescent and incandescent lighting fixtures. In emergency situations, it will supply 90 ...

### [Buy Emergency Inverter 50W Output 120/277V](#)

This emergency inverter operates at 120 or 277V input and output and has the versatility to be paired with LED, fluorescent, or incandescent



fixtures, fixtures with dimmable ballasts, and ...

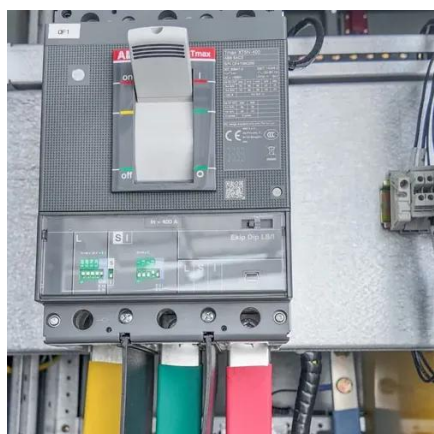


## **CEPS-50W**

The CEPS-50W micro inverters is an easy solution for emergency power needs. Designed with Mule advanced Pure Sine Wave technology, the micro inverters provide direct AC power and ...

## **Pure Sine Wave Inverter 50W**

With a capacity of 50 watts, the pure sine wave inverter 50W is perfectly balanced for a variety of applications. It delivers stable, clean AC power, making it the perfect choice for sensitive ...



## **Pure Sine Wave Solar Inverter Kit**

Our inverter converts DC 12V battery power to standard AC 220V, allowing you to charge smartphones, MP3 players, tablets, and other compatible devices effortlessly.



## Si-50-PST

The Assurance Emergency Lighting Si-50-PST is a compact pure sine wave output inverter designed for designated emergency lighting fixtures and includes PST- Power Share Technology.



## [IOTA IIS50I :: Sine Wave Inverter :: PLATT ELECTRIC SUPPLY](#)

The IOTA IIS 50 I is a UL Listed sine wave output inverter designed to provide power to the designated emergency lighting fixture. In a power loss situation, the IOTA IIS 50 I will supply ...

## Illuminator LVU - 25W & 50W

The Illuminator Series LVU systems incorporate microprocessor controlled PWM (Pulse Width Modulated) pure sine wave based DC to AC power inversion. These units fit many applications ...



## Illuminator LVU - 25W & 50W

[assurancelighting \[PDF\]](#)

## Si-50-PST - [assurancelighting](#)

The Assurance Emergency Lighting Si-50-PST is a compact pure sine wave output inverter designed for designated emergency lighting fixtures and includes PST- Power Share Technology.



## IIS 50 I Emergency Micro-Inverter

The IOTA IIS 50 I is a UL Listed sine wave output inverter designed to provide power to the designated emergency lighting fixture. In a power loss situation, the IOTA IIS 50 I will supply ...





## Contact Us

---

For inquiries, pricing, or partnerships:

<https://www.sccd-sk.eu>

Phone: +32 2 808 71 94

Email: [info@sccd-sk.eu](mailto:info@sccd-sk.eu)

Scan QR code for WhatsApp.

