



5G base station electromagnetic battery detection





Overview

Does 5G signal exposure affect base station compliance?

This agrees with measurements done in other countries whose authors conclude that the exposure to 5G signals is limited , , , but this does not assure the base station compliance as full load situation should be considered for such assessment. It also shows that the increase in the EMF field is due to the induced data traffic.

What is the spectrum of 5G signals?

Spectrum of 5G signals with 0 % (purple), 10 % (yellow), 50 % (green), and 100 % (blue) load. 4. Measurement setup and environment The experimental part of the research consists of a measurement campaign to assess the human exposure to EMF in the surroundings of an active 5G base station.

Can broadband field probes be used for 5G exposure assessment?

Quantification of the uncertainty that the fluctuation in 5G signal levels induces in the assessment of electromagnetic fields exposure is provided. The use of broadband field probes for 5G exposure assessment is still possible under certain considerations and correcting the results considering the base station load and beamforming effects.

Do 5G application base stations meet the electromagnetic radiation environment control limits?

According to the analysis of the monitoring data, the electromagnetic radiation environment levels of 5G application base stations at various monitoring points in urban areas all meet the requirements of the Electromagnetic Environment Control Limits (GB8702-2014).



5G base station electromagnetic battery detection



Electromagnetic field exposure monitoring of commercial 28-GHz ...

Fifth generation (5G) wireless communication is being rolled out around the world. In this work, the latest radio frequency electromagnetic field (EMF) exposure measurement ...

[How to detect whether the electromagnetic battery of 5g ...](#)

This page provides an overview of 5G measurements performed on User Equipment (UE) and Base Stations (BS) or Nodes B (NB). It details both 5G UE measurements and 5G BS ...



Electromagnetic field exposure monitoring of commercial 28-GHz band 5G

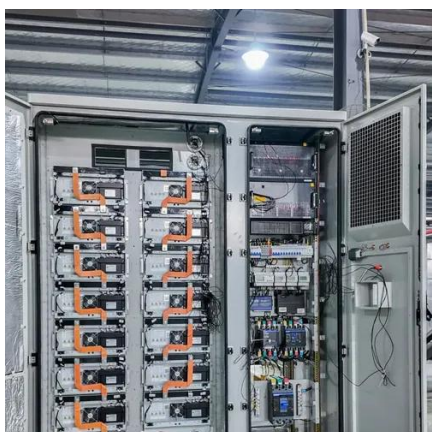
Fifth generation (5G) wireless communication is being rolled out around the world. In this work, the latest radio frequency electromagnetic field (EMF) exposure measurement ...

[The Measurement and Evaluation of the Electromagnetic ...](#)

Through the detection of the surrounding electromagnetic environment before and after the construction of a 5G base station, the impact of



5G communication on the electromagnetic ...



IEC approves new 5G EMF exposure assessment methods standard for base

Harnessing the collaborative power of academia, industry, governments and testing laboratories all working together, the latest IEC standard from TC 106 provides international ...

[IEC approves new 5G EMF exposure assessment ...](#)

Harnessing the collaborative power of academia, industry, governments and testing laboratories all working together, the latest IEC ...



Monitoring and Analysis of the Current Environmental Situation of

At the beginning of the year, we started to monitor the electromagnetic radiation environment of 5G application base stations in major urban roads, logistics centres, residential ...





Human exposure to EMF from 5G base stations: analysis, ...

Performance of three different methodologies and equipment (broadband probes, spectrum analyzers, and drive test scanners), in the context of human exposure to ...

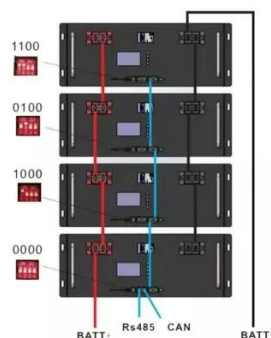


Accurately assessing EMF exposure from 5G

Regarding the RF EMF compliance assessments of 5G new radio (NR) base stations with advanced antennas, the challenge is how to consider the dynamic change of beam patterns ...

Research on the Impact of 5G Terminals on Electromagnetic ...

In order to solve the above two questions, we use the base station electromagnetic radiation function of the EMF meter to measure a 5G base station, and use the 5G NR ...



The Measurement and Evaluation of the Electromagnetic ...

Introduction/purpose: This paper presents initial development of the procedure for electric field estimation in the vicinity of 5G base stations.



5G Base Station Electromagnetic Field Strength Estimation ...

Recently, with the commercialization of 5G, a new electromagnetic field (EMF) evaluation methods is need. However, conventional EMF evaluation methods are only.





Contact Us

For inquiries, pricing, or partnerships:

<https://www.sccd-sk.eu>

Phone: +32 2 808 71 94

Email: info@sccd-sk.eu

Scan QR code for WhatsApp.

