



5G base station electromagnetic wave frequency





5G base station electromagnetic wave frequency



TELECOMMUNICATION ENGINEERING CENTRE ...

5G Spectrum 2.3. As per ITU[4], 5G will use additional spectrum predominately in the echnologies. The additional spectrum and greater capacity will enable more users, more data, ...

A Monte Carlo Analysis of Actual Maximum Exposure From a 5G ...

In this study, the actual maximum EMF exposure and the corresponding PRFs are computed for a millimeter-wave radio base station array antenna. The computed incident power densities ...



Methods and Practices for In Situ Measurements of RF EMF ...

In this article, a methodology for in situ measurements of the radio frequency electromagnetic fields exposure from 5G base stations (BSs) operating at millimeter wave ...

Electromagnetic Field-Aware Radio Resource Management for 5G ...

It is well recognized that 5G sites will intensively exploit massive multiple-input, multiple-output (MIMO) precise beamforming frequency bands in



the millimeter wave ...



RF-EMF Exposure Measurement for 5G over mm ...

This study aims to measure the maximum exposure emitted by a 5G mm-Wave base station by utilizing international standards in both ...



IEC approves new 5G EMF exposure assessment ...

The new standard specifically focuses on test methods to achieve the most accurate assessment of 5G base stations. It ...



Electromagnetic field exposure monitoring of commercial 28-GHz band 5G

In this work, the latest radio frequency electromagnetic field (EMF) exposure measurement results on commercial 28-GHz band 5G base stations (BSs) deployed in the ...





[Accurately assessing EMF exposure from 5G](#)

This white paper provides information related to human exposure to radio frequency electromagnetic fields (RF EMF) from the base stations in the new 5G networks and describes ...



[Electromagnetic Field-Aware Radio Resource ...](#)

It is well recognized that 5G sites will intensively exploit massive multiple-input, multiple-output (MIMO) precise beamforming ...

RF-EMF Exposure Measurement for 5G over mm-Wave Base Station ...

This study aims to measure the maximum exposure emitted by a 5G mm-Wave base station by utilizing international standards in both its assessment methodology and ...



[RF-EMF Measurement for 5G over C-band and mm-Wave ...](#)

It improves cost, power consumption, and offers ultra-low latency and ultra-high dependability to enable new services in a variety of sectors.



RF-EMF Measurement for 5G over C-band and mm-Wave frequency ...

It improves cost, power consumption, and offers ultra-low latency and ultra-high dependability to enable new services in a variety of sectors.

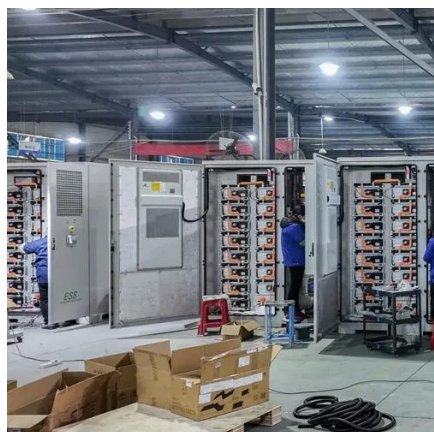


IEC approves new 5G EMF exposure assessment methods standard for base

The new standard specifically focuses on test methods to achieve the most accurate assessment of 5G base stations. It recommends using the 'actual maximum' transmission ...

[Human exposure to EMF from 5G base stations: analysis, ...](#)

Performance of three different methodologies and equipment (broadband probes, spectrum analyzers, and drive test scanners), in the context of human exposure to ...



Electromagnetic field exposure monitoring of commercial 28-GHz ...

In this work, the latest radio frequency electromagnetic field (EMF) exposure measurement results on commercial 28-GHz band 5G base stations (BSs) deployed in the ...



Contact Us

For inquiries, pricing, or partnerships:

<https://www.sccd-sk.eu>

Phone: +32 2 808 71 94

Email: info@sccd-sk.eu

Scan QR code for WhatsApp.

