



5g base station power consumption shutdown





Overview

Can 5G reduce energy consumption?

However, the energy consumption of 5G networks is today a concern. In recent years, the design of new methods for decreasing the RAN power consumption has attracted interest from both the research community and standardization bodies, and many energy savings solutions have been proposed.

Can network energy saving technologies mitigate 5G energy consumption?

This technical report explores how network energy saving technologies that have emerged since the 4G era, such as carrier shutdown, channel shutdown, symbol shutdown etc., can be leveraged to mitigate 5G energy consumption.

Is 5G base station power consumption accurate?

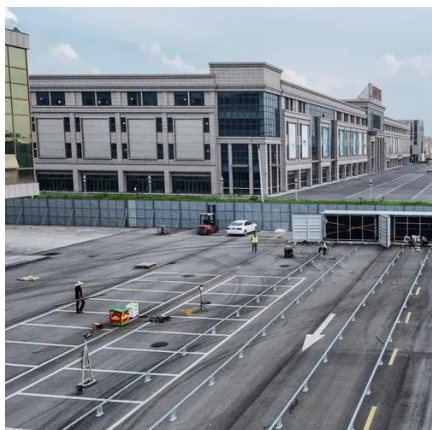
Abstract—The energy consumption of the fifth generation (5G) of mobile networks is one of the major concerns of the telecom industry. However, there is not currently an accurate and tractable approach to evaluate 5G base stations (BSs) power consumption. In this article, we pr.

Is a 5G energy saving solution enough?

It also analyses how enhanced technologies like deep sleep, symbol aggregation shutdown etc., have been developing in the 5G era. This report aims to detail these fundamentals. However, it is far away from being enough, a revolutionized energy saving solution should be taken into consideration.



5g base station power consumption shutdown



[Intelligent Energy Saving Solution of 5G Base ...](#)

In the energy consumption structure, the power consumption accounts for more than 80%. The electricity cost. energy consumption. ...

Energy Saving of 5G Base Stations Based on Symbol Shutdown ...

The rapid development of 5G technology leads to increasing energy consumption in base stations (BSs). For the vision of green and sustainable communications, we



Why does 5g base station consume so much power and how to ...

Why does the base station consume electricity? The following presents the results of professional frontline testing, with the power consumption of Huawei and ZTE 5G base ...

Final draft of deliverable D.WG3-02-Smart Energy Saving of ...

By directing users from their less power-efficient spectrum band(s) to other band(s) that are more power-efficient, more radio resources can be shut



down to lower network energy consumption.



Final draft of deliverable D.WG3-02-Smart Energy Saving of ...

This technical report explores how network energy saving technologies that have emerged since the 4G era, such as carrier shutdown, channel shutdown, symbol shutdown etc., can be ...

Energy-saving control strategy for ultra-dense network base stations

Using this technique, the energy consumption of a base station can be reduced by turning off energy-intensive devices inside the base station, or by turning off the entire base ...



Research and Verification of Power Saving Technology in 5G ...

By reducing AAU power consumption, turn on the base station's power saving switch such as subframe shutdown and channel shutdown. It can effectively control the power consumption ...



Intelligent Energy Saving Solution of 5G Base Station Based on

In the energy consumption structure, the power consumption accounts for more than 80%. The electricity cost. energy consumption. Especially with the large-scal e. ...

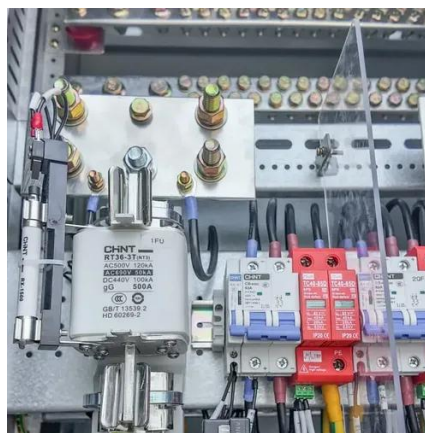


[Machine Learning and Analytical Power Consumption ...](#)

When symbol shutdown is activated, the AAU switches off the MCPAs, and its power consumption is reduced to the sum of the baseline power consumption, P_0 , the baseband ...

[Power Consumption Modeling of 5G Multi-Carrier Base ...](#)

However, the energy consumption of 5G networks is today a concern. In recent years, the design of new methods for decreasing the RAN power consumption has attracted interest from both ...



Energy Saving of 5G Base Stations Based on Symbol Shutdown and Power

The rapid development of 5G technology leads to increasing energy consumption in base stations (BSs). For the vision of green and sustainable communications, we



Energy-saving control strategy for ultra-dense network base ...

Using this technique, the energy consumption of a base station can be reduced by turning off energy-intensive devices inside the base station, or by turning off the entire base ...



Base station power control strategy in ultra-dense networks via ...

To enhance system efficiency and establish green wireless communication systems, this paper investigates base station sleeping and power allocation strategy based on ...

[Why does 5g base station consume so much ...](#)

Why does the base station consume electricity? The following presents the results of professional frontline testing, with the power ...





Contact Us

For inquiries, pricing, or partnerships:

<https://www.sccd-sk.eu>

Phone: +32 2 808 71 94

Email: info@sccd-sk.eu

Scan QR code for WhatsApp.

