



5g base station power introduction assessment





Overview

What is a 5G base station energy consumption prediction model?

According to the energy consumption characteristics of the base station, a 5G base station energy consumption prediction model based on the LSTM network is constructed to provide data support for the subsequent BSES aggregation and collaborative scheduling.

What is a 5G base station energy storage device?

During main power failures, the energy storage device provides emergency power for the communication equipment. A set of 5G base station main communication equipment is generally composed of a baseband BBU unit and multiple RF AAU units. Equation 1 serves as the base station load model:.

How a 5G base station has changed the performance of a base station?

To meet the communication requirements of large capacity and low delay, the commissioning of new equipment has significantly improved the performance of 5G base stations compared with the previous generation base stations. At the same time, the new equipment has altered the power load characteristics of base stations.

How accurate is 5G base station energy consumption prediction model based on LSTM?

- The 5G base station energy consumption prediction model based on LSTM proposed in this paper takes into account the energy consumption characteristics of 5G base stations. The prediction results have high accuracy and provide data support for the subsequent research on BSES aggregation and optimal scheduling.



5g base station power introduction assessment



2MW / 5MWh
Customizable

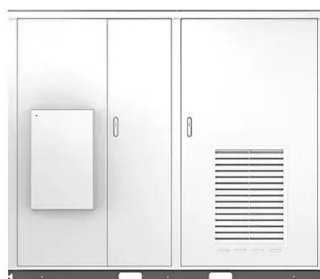
Ensure Your Base Station Transmitter Complies with 5G NR ...

This paper discusses 5G NR Release 16 base station transmitter conformance testing requirements and the specific challenges that arise in millimeter wave (mmWave) frequency ...

[Analysis of the Actual Power and EMF Exposure ...](#)

In this work, monitoring of the transmit power for several base stations operating in a live 5G network (Telstra, Australia) was conducted ...

Solar



[5g base station power introduction assessment](#)

The power consumption of a single 5G station is 2.5 to 3.5 times higher than that of a single 4G station. The main factor behind this increase in 5G power consumption is the high power ...



[Power Consumption Modeling of 5G Multi-Carrier Base ...](#)

Importantly, this study item indicates that new 5G power consumption models are needed to accurately develop and optimize new energy



saving solutions, while also considering the ...



Base station testing

Traditionally base stations have been verified by measuring their performance conductively at the antenna interface. With 5G, we ...



Analysis of the Actual Power and EMF Exposure from Base Stations ...

In this work, monitoring of the transmit power for several base stations operating in a live 5G network (Telstra, Australia) was conducted with the purpose of analyzing the radio ...



Comparison of Power Consumption Models for 5G Cellular Network Base

Power consumption models for base stations are briefly discussed as part of the development of a model for life cycle assessment. An overview of relevant base station power ...





[Coordinated scheduling of 5G base station energy ...](#)

With the rapid development of 5G base station construction, significant energy storage is installed to ensure stable communication. ...



[An Introduction to 5G and How MPS Products Can Optimize ...](#)

This article described the basics of 5G and introduced two MPS parts -- the MPQ8645 and MP87190 -- that can be used to improve the AAU or BBU architecture within a 5G base cell ...

[Human exposure to EMF from 5G base stations: analysis, ...](#)

Performance of three different methodologies and equipment (broadband probes, spectrum analyzers, and drive test scanners), in the context of human exposure to ...



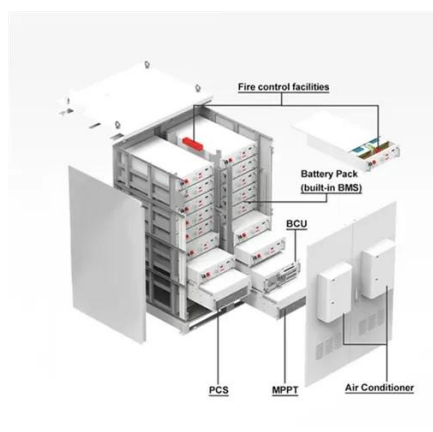
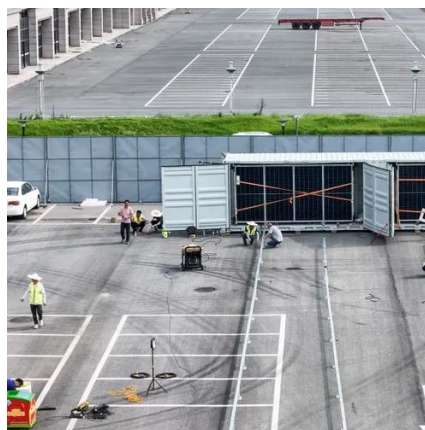
Measurement of 5G base stations

Traditional EMF equipment can be used for 5G NR, if:- 100% download traffic can be provoked (UE)- maximum power is available (no limitation due to power control)- RMS detector is used- ...



Base station testing

Traditionally base stations have been verified by measuring their performance conductively at the antenna interface. With 5G, we enter a new and exciting era for base ...



Comparison of Power Consumption Models for 5G Cellular ...

Power consumption models for base stations are briefly discussed as part of the development of a model for life cycle assessment. An overview of relevant base station power ...

Coordinated scheduling of 5G base station energy storage for ...

With the rapid development of 5G base station construction, significant energy storage is installed to ensure stable communication. However, these storage resources often ...





Contact Us

For inquiries, pricing, or partnerships:

<https://www.sccd-sk.eu>

Phone: +32 2 808 71 94

Email: info@sccd-sk.eu

Scan QR code for WhatsApp.

