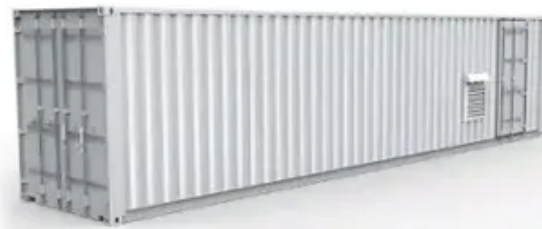




# 60w solar panel size





## Overview

---

The dimensions of a 60W solar panel can vary slightly depending on the manufacturer and specific design, but 1. the typical size is approximately 47 inches by 21 inches (119 cm by 53 cm), 2. these panels weigh around 18 to 22 pounds (8 to 10 kg), and 3. they are suitable for small.

The dimensions of a 60W solar panel can vary slightly depending on the manufacturer and specific design, but 1. the typical size is approximately 47 inches by 21 inches (119 cm by 53 cm), 2. these panels weigh around 18 to 22 pounds (8 to 10 kg), and 3. they are suitable for small.

What is the size of a 60w solar panel?

The dimensions of a 60W solar panel can vary slightly depending on the manufacturer and specific design, but 1. the typical size is approximately 47 inches by 21 inches (119 cm by 53 cm), 2. these panels weigh around 18 to 22 pounds (8 to 10 kg), and 3. they.

Standard Residential Panels Optimize Space and Handling: The industry-standard 60-cell panel dimensions (65" × 39" × 1.5") aren't arbitrary - they represent the optimal balance between power output, installation ease, and roof space utilization. At 40-46 pounds, they can be safely handled by.

Our range of solar panels are constructed from ultra-efficient polycrystalline and have been designed to provide a reliable and cost-effective alternative energy solution for applications where mains power is either not available, or not desirable.

The size of solar panels varies depending on the number of photovoltaic (PV) cells they include. Each cell adds to the panel's total voltage and power output. The most commonly used cell layouts are 60-cell, 72-cell, and 96-cell panels. Let's consider their main features and purpose: 60-cell solar.

Standard residential solar panels are typically around 5.8 feet long by 3.5 feet wide and weigh between 40 to 50 pounds. However, the exact dimensions depend heavily on the panel's technology, wattage, and the manufacturer's design. Understanding these specifications is crucial for determining roof.



Example: 5kW solar system is comprised of 50 100-watt solar panels. Alright, your roof square footage is 1000 sq ft. Can you put a 5kW solar system on your roof?

For that, you will need to know what size is a typical 100-watt solar panel, right?

To bridge that gap of very useful knowledge needed.



## 60w solar panel size

---



### [Solar Panel Size & Dimensions Guide 2025 \\_Complete Specs](#)

In this comprehensive guide, you'll learn everything you need to know about solar panel sizing, from standard dimensions to weight considerations, helping you determine the ...

### **The Ultimate Guide to Solar Panel Size, Weight & Wattage (2025)**

Standard residential solar panels are typically around 5.8 feet long by 3.5 feet wide and weigh between 40 to 50 pounds. However, the exact dimensions depend heavily on the ...



### **Understanding Solar Panel Sizes and Wattage: A Complete Tutorial**

For example, a standard 60-cell module measures about 65 inches by 39 inches, while a larger 72-cell unit is approximately 77 inches by 39 inches. These dimensions are ...

### **60W Solar panel specifications**

60W Solar panel specifications Our range of solar panels are constructed from ultra-efficient polycrystalline and have been designed to provide a reliable and cost-effective alternative ...



### [60 watt solar panels - 60 watt solar panels on the roof](#)

Understand the capacity of a 60W solar panel, learning how it harnesses sunlight through the photovoltaic effect. Discover practical applications for a 60W solar panel, such as ...



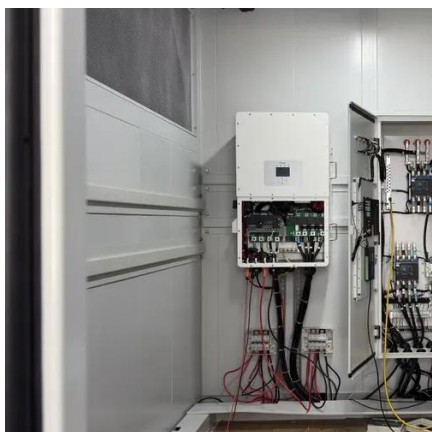
### [What Are the Common Solar Panel Sizes?](#)

60-cell solar panels are popular for residential installations due to their manageable size and weight. These panels typically measure: With a power output ranging from 270 to 300 ...



### [What is the size of a 60w solar panel? , NenPower](#)

Typically, these panels measure around 47 inches by 21 inches (119 cm by 53 cm), which allows for flexibility in installation ...





## [Detailed Guide to Solar Panel Size & Dimensions](#)

Choosing the proper system is not only about the solar panel dimensions. You should also consider wattage, number of cells, layout possibilities, and energy consumption. ...



## [EXP PRO Summit 60 Watt Solar Panel \(monocrystalline\)](#)

The EXP PRO Summit 60 Watt Solar Panel combines exceptional efficiency with unmatched portability, folding down to just 9.8" x 13.5" x 1" for easy transport and storage. Designed for ...

## [Standard Solar Panel Sizes And Wattages \(100W-500W ...](#)

Alright, let's have a look at the length and width of typical solar panels, with wattage (very important), and complete with area or square footage (useful when calculating how many solar ...



## [What is the size of a 60w solar panel? , NenPower](#)

Typically, these panels measure around 47 inches by 21 inches (119 cm by 53 cm), which allows for flexibility in installation options, especially in constrained environments such ...



## Contact Us

---

For inquiries, pricing, or partnerships:

<https://www.sccd-sk.eu>

Phone: +32 2 808 71 94

Email: [info@sccd-sk.eu](mailto:info@sccd-sk.eu)

Scan QR code for WhatsApp.

