



660 double-glass bifacial module





660 double-glass bifacial module

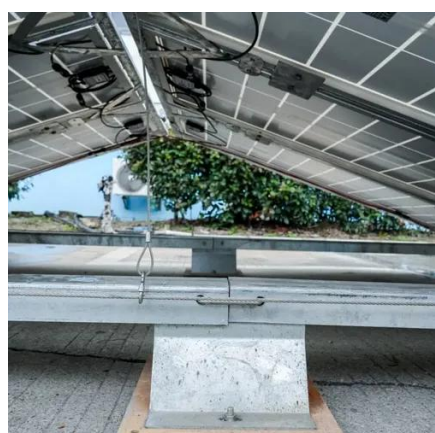


JA Solar Products - Sustainable Solutions for Residential, ...

Solar panel For use on commercial and industrial roofs and in large-scale PV projects, 66 cells, 182/210mm, N-Type TOPCon, Double Glass, Bifacial

Mono PERC Bifacial Double Glass Photovoltaic Solar Panel ...

Based on 210mm silicon wafer and 132 half-cut mono-crystalline PERC cell, the Evo 6 Series photovoltaic panels comes with several innovative design features allowing higher output ...



[Longi Hi-MO9 LR7-72HYD Bifacial 660W 655W 650W 645W ...](#)

The Longi Hi-MO9 LR7-72HYD Bifacial Solar Panel combines cutting-edge bifacial technology and double glass design for superior energy efficiency and durability. It maximizes power ...

[Mono PERC Bifacial Double Glass Photovoltaic ...](#)

Based on 210mm silicon wafer and 132 half-cut mono-crystalline PERC cell, the Evo 6 Series photovoltaic panels comes with several innovative



...



Trina Solar TSM-660DEG21C.20

The Trina Solar TSM-DEG21C.20-660 is a high-power bifacial dual-glass module using monocrystalline high-density-interconnect cells, delivering 660 Wp with a module efficiency of ...



Longi Hi-MO9 LR7-72HYD Bifacial 660W 655W 650W 645W 640W 635W Double

The Longi Hi-MO9 LR7-72HYD Bifacial Solar Panel combines cutting-edge bifacial technology and double glass design for superior energy efficiency and durability. It maximizes power ...



[Tiger Neo Bifacial 66 HC Dual Glass 605-630W](#)

Tiger Neo Bifacial 66 HC Dual Glass 605-630W N-type PV modules with JinkoSolar's HOT 3.0 technology offer better reliability and efficiency.





JA Solar Products - Sustainable Solutions for ...

Solar panel For use on commercial and industrial roofs and in large-scale PV projects, 66 cells, 182/210mm, N-Type TOPCon, Double Glass, Bifacial



Tiger Neo Bifacial 66 HC Dual Glass 605-630W

Tiger Neo Bifacial 66 HC Dual Glass 605-630W N-type PV modules with JinkoSolar's HOT 3.0 technology offer better reliability and efficiency.

Q.PEAK DUO ML-G12S/BFG

This 1500V UL/IEC solar module ensures superior yields with up to 680Wp while having a very low LCOE. Proudly assembled in the USA, this high ...



AE_ME-132BD_640W-660W_Ver24.1.1

The specifications and characteristics contained in this datasheet may deviate slightly from our actual products due to the product developments and uncertainty of measurement devices. ...



[EVO 6R 600-625W N Type TOPCon Bifacial Double-glass ...](#)

Bifacial with Double-Glass Module adopts 182*210mm half cells, bifacial module provide an additional 5%~25% output.



[HS66-F-660-MN Double Glass PERC Module](#)

GreenWatts Solar Panel Series HS66-F-660-MN Double Glass PERC Module. Detailed profile including pictures, certification details and manufacturer PDF.

Q.PEAK DUO ML-G12S/BFG

This 1500V UL/IEC solar module ensures superior yields with up to 680Wp while having a very low LCOE. Proudly assembled in the USA, this high-performing module delivers exceptional ...





Contact Us

For inquiries, pricing, or partnerships:

<https://www.sccd-sk.eu>

Phone: +32 2 808 71 94

Email: info@sccd-sk.eu

Scan QR code for WhatsApp.

