



Annual degradation rate of solar panels





Annual degradation rate of solar panels

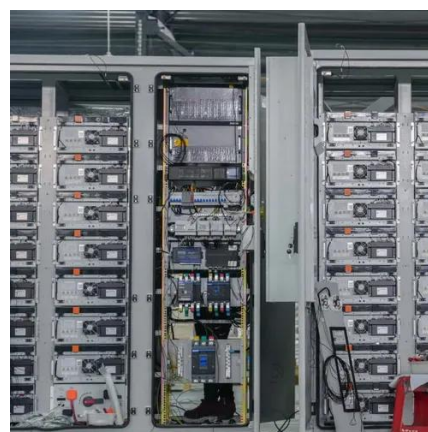


[Why Your Solar Panels Lose Power \(And What It ...\)](#)

Most quality solar panels degrade at just 0.5% to 0.8% per year, meaning they'll still produce about 85% of their original output after ...

Why Your Solar Panels Lose Power (And What It Really Means ...)

Most quality solar panels degrade at just 0.5% to 0.8% per year, meaning they'll still produce about 85% of their original output after 25 years.



[What Is the Annual Degradation Rate in Solar Modules?](#)

According to studies, the average degradation rate for modern solar panels is about 0.5% to 1% per year. This means that each year, a solar panel's output may decrease by this ...

[Annual Degradation Rate -- How Solar Panels Lose ...](#)

The annual degradation rate is the percentage by which a solar panel's energy output decreases each year due to natural aging, material wear, and



environmental exposure.



Understanding the Degradation Rate of Solar Panels: How ...

What Is The Degradation Rate Of Solar Panels Over Time? The degradation rate measures how much a solar panel's performance decreases each year. On average, solar panels degrade at ...

Annual Degradation of Solar Panels: Key Insights

Solar panel degradation refers to the gradual decline in performance and efficiency of solar panels over time. This natural aging process can result ...



Understanding the Degradation Rate of Solar ...

What Is The Degradation Rate Of Solar Panels Over Time? The degradation rate measures how much a solar panel's performance decreases each ...



Annual Degradation of Solar Panels: Key Insights

Solar panel degradation refers to the gradual decline in performance and efficiency of solar panels over time. This natural aging process can result from various factors, including environmental ...



Photovoltaic Lifetime Project, Photovoltaic Research, NLR

PV modules typically degrade slowly--often losing less than 1% of their performance per year--making their degradation undetectable (within measurement uncertainty) for the first ...



Solar Panel Degradation: What Is It and Why Should You Care?

Appropriate degradation rates of solar panels are estimated at 0.5% per year considering a well-maintained PV system featuring ideal conditions. However, solar panel ...



Solar Panel Degradation: What Is It and Why ...

Appropriate degradation rates of solar panels are estimated at 0.5% per year considering a well-maintained PV system featuring ideal ...

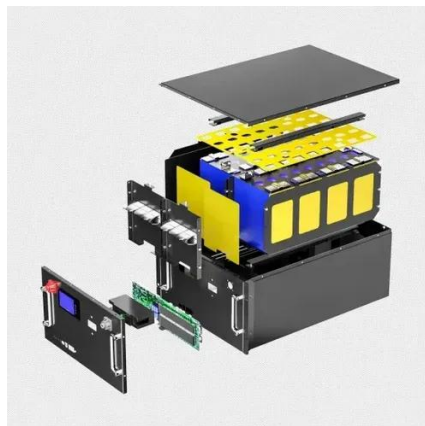
ESS





Solar Panel Degradation Calculator - Estimate Annual kWh Loss

Most panels today degrade at around 0.3%-0.8% per year, meaning after 25 years, you can expect about 80-90% of original efficiency remaining. Premium panels often carry lower ...



Solar Panel Degradation: How It Affects Long-Term Performance

Solar panel degradation is a gradual decline in efficiency due to exposure to sunlight and weather. Most solar panels degrade at a rate of about 0.5% per year, meaning ...

Solar Panel Life Expectancy & Degradation Rates

According to NREL data, modern crystalline modules degrade at an average rate of 0.5% annually, implying about 88% capacity at year 25. Lower degradation translates to higher ...





Contact Us

For inquiries, pricing, or partnerships:

<https://www.sccd-sk.eu>

Phone: +32 2 808 71 94

Email: info@sccd-sk.eu

Scan QR code for WhatsApp.

