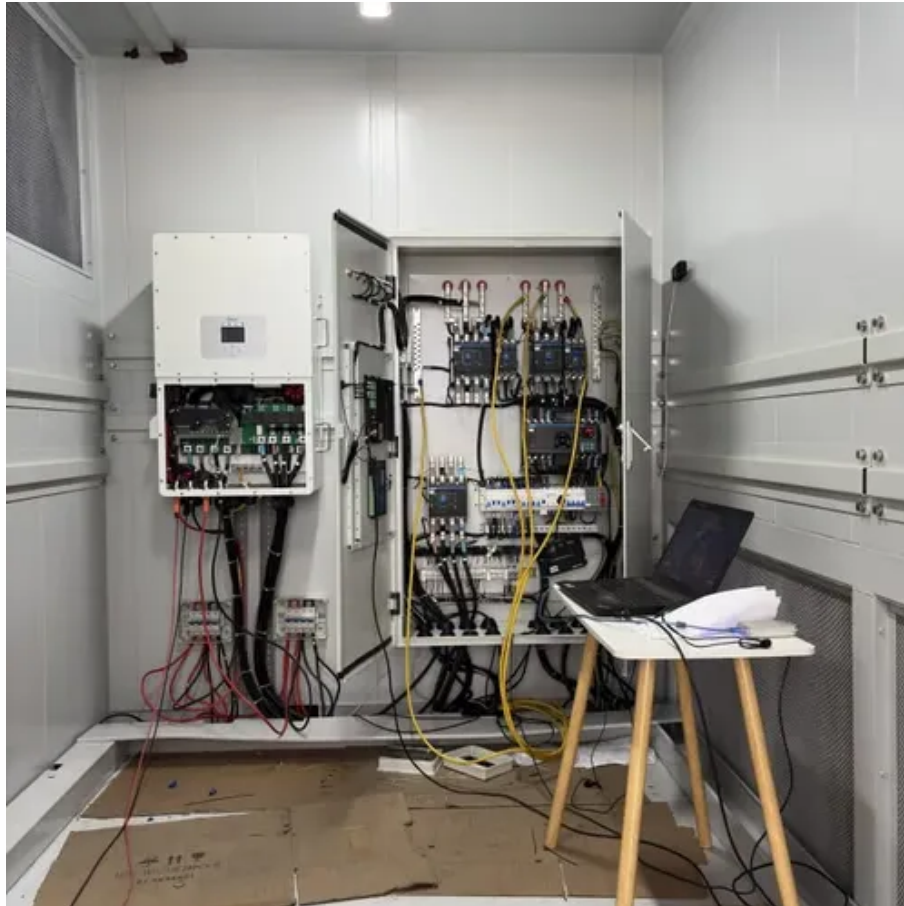




Assembly of solar panels manufacturers





Assembly of solar panels manufacturers



How to write if-else in assembly?

How to write the equal condition (in the question) in assembly? Your example has an else statement while mine uses an else if.

What does the dollar sign (\$) mean in x86 assembly when ...

What does the dollar sign (\$) mean in x86 assembly when calculating string lengths like "\$ - label"? [duplicate] Asked 13 years, 8 months ago Modified 8 years, 2 months ...



What exactly is an Assembly in C# or ?

Could you please explain what is an Assembly in C# or ? Where does it begin and where does it end? What important information should I know about Assemblies?

What do the dollar (\$) and percentage (%) signs represent in x86 ...

I am trying to understand how the assembly language works for a micro-computer architecture



class, and I keep facing different syntaxes in examples: sub \$48, %esp mov ...



x86

can anyone give me a comprehensive description about ORG directive? When and why is it used in assembly written applications? Using Nasm on x86 or AMD64.

terminology

The assembly is a piece of code/executable that is in machine executable code. This might be an obj, exe, dll, It is the result of a compile. The assembler is the "compiler" ...



There are three assembly version attributes. What are differences? Is it ok if I use AssemblyVersion and ignore the rest? MSDN says: AssemblyVersion: Specifies the version of ...



assembly

What is the actual purpose and use of the EDI & ESI registers in assembler? I know they are used for string operations for one thing. Can someone also give an example?



[How to write hello world in assembly under Windows?](#)

I wanted to write something basic in assembly under Windows. I'm using NASM, but I can't get anything working. How do I write and compile a hello world program without the help of C ...



What does the 'and' instruction do to the operands in assembly ...

What does the 'and' instruction do in assembly language? I was told that it checks the bit order of the operands and sets the 1s to true and anything else to false, but I don't know ...





Contact Us

For inquiries, pricing, or partnerships:

<https://www.sccd-sk.eu>

Phone: +32 2 808 71 94

Email: info@sccd-sk.eu

Scan QR code for WhatsApp.

