



# Base station battery height





## Overview

---

Each battery occupies a 3ft x 3ft area and is just over 36 inches tall, which is crucial for planning installation space appropriately. The Base installation team tailors configurations to specific site layouts, ensuring efficiency and compliance.

Each battery occupies a 3ft x 3ft area and is just over 36 inches tall, which is crucial for planning installation space appropriately. The Base installation team tailors configurations to specific site layouts, ensuring efficiency and compliance.

Each battery occupies a 3ft x 3ft area and is just over 36 inches tall, which is crucial for planning installation space appropriately. The Base installation team tailors configurations to specific site layouts, ensuring efficiency and compliance. Typically, the Base Power system is installed near.

Among various battery technologies, Lithium Iron Phosphate (LiFePO<sub>4</sub>) batteries stand out as the ideal choice for telecom base station backup power due to their high safety, long lifespan, and excellent thermal stability. This guide outlines the design considerations for a 48V 100Ah LiFePO<sub>4</sub> battery.

The average battery capacity required by a base station ranges from 15 to 50 amp-hours (Ah), depending on the base station's operational demands and the technologies it employs. 1. The energy consumption of the equipment is not uniform; it varies significantly based on traffic load and service.

Choosing the right battery capacity is essential to ensure sufficient backup power during outages. Key Factors: Power Consumption: Determine the base station's load (in watts). Backup Duration: Identify the required backup time (hours). Battery Voltage: Select the correct voltage based on system.

When designing base station power systems, engineers face a critical dilemma: How do we balance battery capacity with operational realities?

Recent GSMA data reveals that 23% of network outages stem from improper battery sizing, costing operators \$4.7 billion annually. Let's dissect this technical.

The battery can support loads that need 88-100 LRA to start. Note: AC units with an LRA above 100 may require a soft start to work with this battery. Shows the



ambient temperature range within which the battery can safely operate. The sound level produced by the battery at a distance of 1 meter.



## Base station battery height

---



### [Where can the battery system be installed? What are the ...](#)

Each battery occupies a 3ft x 3ft area and is just over 36 inches tall, which is crucial for planning installation space appropriately. The Base installation team tailors configurations to specific ...

### [Optimum sizing and configuration of electrical system for](#)

This study develops a mathematical model and investigates an optimization approach for optimal sizing and deployment of solar photovoltaic (PV), battery bank storage ...



### [Base Wall Mounted System Specifications , Home ...](#)

Technical specifications for the Wall Mounted home battery system from Base Power. 20 kWh capacity, 27.17" width, 58.5 height, 7.28" depth. ...

### [How much battery capacity does the base station ...](#)

The average battery capacity required by a base station ranges from 15 to 50 amp-hours (Ah), depending on the base station's ...



## Base Single Ground Mounted System Specifications , Home Battery ...

Technical specifications for the Single Ground home battery system from Base Power. 25 kWh capacity, 38" width, 36.25" height, 24" depth. View detailed performance data.

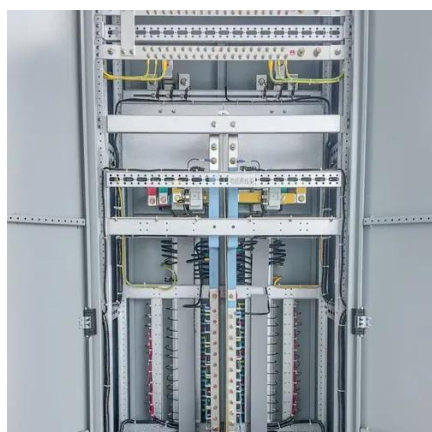
## How to Determine the Right Battery Capacity for Telecom Base Stations

Example: If a base station consumes 500W and needs 4 hours of backup at 48V, the required capacity is:  $500W \times 4h / 48V = 41.67Ah$ . Choosing a battery with a slightly higher ...



## [How much battery capacity does the base station use?](#)

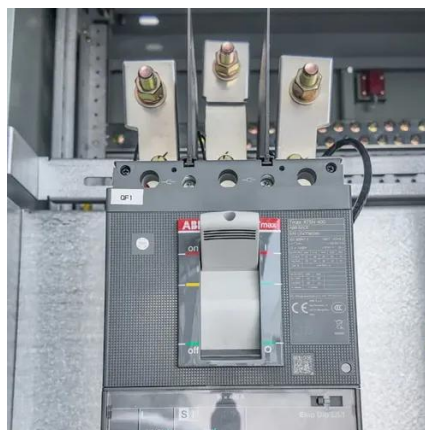
The average battery capacity required by a base station ranges from 15 to 50 amp-hours (Ah), depending on the base station's operational demands and the technologies it ...





## [How to Determine the Right Battery Capacity for ...](#)

Example: If a base station consumes 500W and needs 4 hours of backup at 48V, the required capacity is:  $500W \times 4h / 48V = 41.67Ah$ . ...



## **Telecom Base Station Backup Power Solution: Design Guide for ...**

Discover the 48V 100Ah LiFePO4 battery pack for telecom base stations: safe, long-lasting, and eco-friendly. Optimize reliability with our design guide.

## [Base Single Ground Mounted System Specifications , Home ...](#)

Technical specifications for the Single Ground home battery system from Base Power. 25 kWh capacity, 38" width, 36.25" height, 24" depth. View detailed performance data.



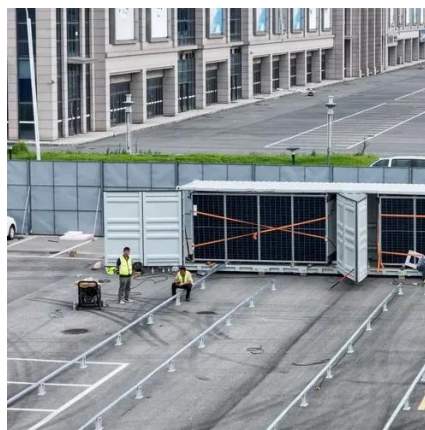
## [Base Power Battery Specifications , Compare Models](#)

Compare Base Power's home battery systems - from our streamlined 20kWh wall-mount to our advanced 50kWh ground-mount solution. View complete technical specifications.



## Base Wall Mounted System Specifications , Home Battery Specs , Base ...

Technical specifications for the Wall Mounted home battery system from Base Power. 20 kWh capacity, 27.17" width, 58.5 height, 7.28" depth. View detailed performance data.



## [What Size Battery for Base Station? , HuiJue Group E-Site](#)

As millimeter-wave expands and Open RAN complicates power distribution, one truth emerges: battery sizing isn't just engineering - it's strategic infrastructure planning.

## What is the height of the energy storage battery compartment?

The height of the energy storage battery compartment varies widely depending on several factors including the type of battery technology employed, the manufacturer's ...



## [Telecom Base Station Backup Power Solution: ...](#)

Discover the 48V 100Ah LiFePO4 battery pack for telecom base stations: safe, long-lasting, and eco-friendly. Optimize reliability with ...



## [What is the height of the energy storage battery ...](#)

The height of the energy storage battery compartment varies widely depending on several factors including the type of battery ...



## [Base Power Battery Specifications, Compare Models](#)

Compare Base Power's home battery systems - from our streamlined 20kWh wall-mount to our advanced 50kWh ground-mount solution. View ...



## Contact Us

---

For inquiries, pricing, or partnerships:

<https://www.sccd-sk.eu>

Phone: +32 2 808 71 94

Email: [info@sccd-sk.eu](mailto:info@sccd-sk.eu)

Scan QR code for WhatsApp.

