



# Base station battery maintenance cycle





## Overview

---

Perform inspections every three to six months, including: 1.Measuring float voltage and current. 2.Checking terminals for corrosion or loose connections. 3.Verifying case condition for any bulging or damage. 4.Recording battery and ambient temperatures. 4. Prevent Deep Discharge.

Perform inspections every three to six months, including: 1.Measuring float voltage and current. 2.Checking terminals for corrosion or loose connections. 3.Verifying case condition for any bulging or damage. 4.Recording battery and ambient temperatures. 4. Prevent Deep Discharge.

Proper care and routine maintenance are essential to maximize the lifespan and performance of any lead-acid telecom battery. This guide outlines key practices to help improve long-term reliability and minimize downtime. Used for backup energy in telecommunications infrastructure, telecom battery.

Communication base stations rely heavily on emergency batteries to ensure uninterrupted service during power outages. Maintaining these batteries is of utmost importance to guarantee the continuous operation of the base station. Regular inspection is the first step in the maintenance process.

ambient temperature, load changes, and battery aging. Regular maintenance helps detect potential issues, prevents sudden system failures, and ensures long-term stability (inverters), control systems and monitoring equipment. There are a variety of battery types used, including lithium-ion, lead-acid.

The UPS battery plays an integral role by maintaining power long enough for these systems to start up and stabilize. Additionally, in situations where a controlled shutdown of equipment is necessary, the UPS battery provides the crucial window required for a safe and orderly power down. Several.

Here are some key steps to maintain backup power for telecommunications base stations. Regular Inspections: Conduct routine inspections of backup power systems, including batteries, generators, and inverters, to ensure they are in good working condition. Check for signs of corrosion, leaks, or.

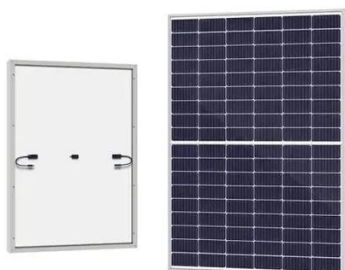
As telecom infrastructure increasingly relies on sustainable and efficient energy



solutions, proper maintenance of EVE's 102Ah deep-cycle battery becomes essential to ensuring optimal performance and longevity. Importance of Regular Inspection and Monitoring One of the best practices for.



## Base station battery maintenance cycle



### [UPS Batteries in Telecom Base Stations - legend](#)

This article delves deep into the role, technology, maintenance, and future trends of UPS batteries in telecom base stations, offering a detailed exploration of how these systems ...

### [Maintenance Best Practices for Telecommunication Base ...](#)

Regular monitoring of battery voltage and capacity levels is also crucial; this can help identify any issues before they escalate into significant problems. By implementing a ...



Test certification  
CE FC UL



### [Base Station Energy Storage Maintenance: The Overlooked ...](#)

Looking ahead, the emergence of sodium-ion batteries (like CATL's recent 160Wh/kg breakthrough) will redefine maintenance paradigms. These cobalt-free systems reportedly ...

## How to Maintain Backup Power Supply for Telecommunications ...

Maintaining backup power supply for telecommunications base stations is crucial to ensure uninterrupted communication services,



especially during power outages or emergencies. Here ...



## Maintenance of Emergency Batteries in Communication Base Stations

Based on the battery's age, cycle life, and performance monitoring data, technicians should plan for timely battery replacements. Waiting too long to replace a deteriorating battery can lead to ...

## Telecom Base Station Backup Power Solution: ...

Long Cycle Life LiFePO4 batteries can achieve over 2,000 cycles, and in some cases up to 5,000 cycles, far surpassing the 300-500 ...



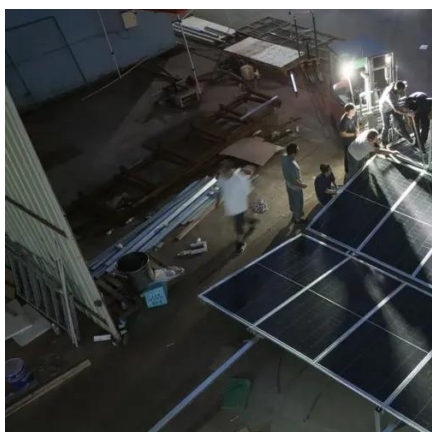
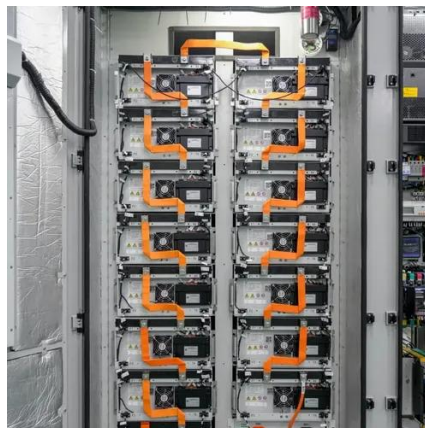
## How to Maintain Backup Power Supply for Telecommunications Base Stations?

Maintaining backup power supply for telecommunications base stations is crucial to ensure uninterrupted communication services, especially during power outages or emergencies. Here ...



## Maintenance Best Practices for Telecommunication Base Stations ...

Regular monitoring of battery voltage and capacity levels is also crucial; this can help identify any issues before they escalate into significant problems. By implementing a ...

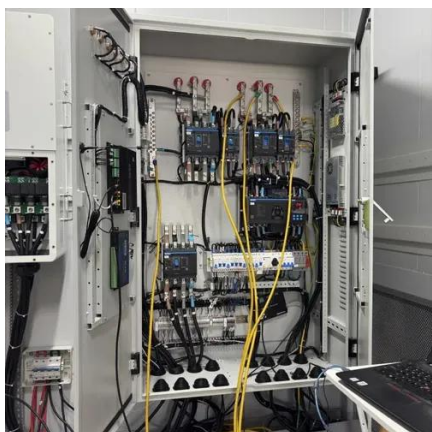


## Deep Cycle Battery for Remote Area Base Stations

Unlike standard batteries, deep cycle batteries for remote base stations are engineered to withstand extreme environmental conditions, frequent deep discharges, and ...

## UPS Batteries in Telecom Base Stations - leagend

This article delves deep into the role, technology, maintenance, and future trends of UPS batteries in telecom base stations, ...



## Maintenance of Emergency Batteries in Communication Base ...

Based on the battery's age, cycle life, and performance monitoring data, technicians should plan for timely battery replacements. Waiting too long to replace a deteriorating battery can lead to ...



## What Are the Critical Aspects of Telecom Base Station Backup Batteries?

Cycle life indicates how many charge-discharge cycles a battery can endure before capacity significantly degrades. Telecom backup batteries typically require thousands of cycles (often ...



### [How to maintain base station energy storage batteries](#)

China's communication energy storage market has begun to widely use lithium batteries as energy storage base station batteries, new investment in communication base station projects, ...



## Telecom Base Station Backup Power Solution: Design Guide for ...

Long Cycle Life LiFePO4 batteries can achieve over 2,000 cycles, and in some cases up to 5,000 cycles, far surpassing the 300-500 cycles of lead-acid batteries. This ...



### **Telecom Battery Maintenance Guide: How to Extend the Life of ...**

Proper care and routine maintenance are essential to maximize the lifespan and performance of any lead-acid telecom battery. This guide outlines key practices to help ...



## What Are the Critical Aspects of Telecom Base Station Backup ...

Cycle life indicates how many charge-discharge cycles a battery can endure before capacity significantly degrades. Telecom backup batteries typically require thousands of cycles (often ...





## Contact Us

---

For inquiries, pricing, or partnerships:

<https://www.sccd-sk.eu>

Phone: +32 2 808 71 94

Email: [info@sccd-sk.eu](mailto:info@sccd-sk.eu)

Scan QR code for WhatsApp.

