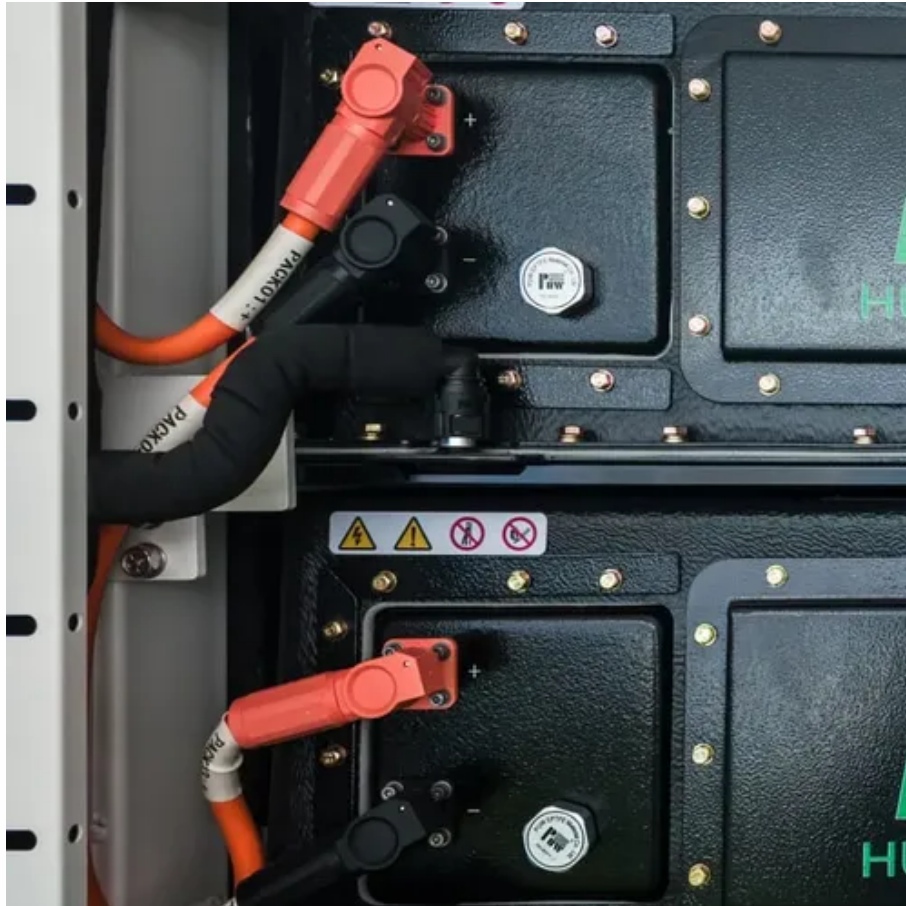




Base station communication channel





Overview

In communications, a base station is a communications station installed at a fixed location and used to communicate as part of one of the following: • a system, or; • a system such as or .

A base station represents an access point for a wireless device to communicate within its coverage area. It usually connects the device to other networks or devices through a dedicated high bandwidth wire or fiber optic connection.

A base station represents an access point for a wireless device to communicate within its coverage area. It usually connects the device to other networks or devices through a dedicated high bandwidth wire or fiber optic connection.

The present-day tele-space is incomplete without the base stations as these constitute an important part of the modern-day scheme of wireless communications. They are referred to as cell towers or cellular antennas. These types of objects are an inevitability since they serve the purpose of.

In the world of wireless communication, the choice of channels for base stations plays a critical role in ensuring reliable service, minimizing interference, and optimizing performance. Whether you're setting up a mobile network, Wi-Fi infrastructure, or IoT devices, understanding the channel.

Base station (or base radio station, BS) is – according to the International Telecommunication Union 's (ITU) Radio Regulations (RR) [1] – a " land station in the land mobile service." A base station is called node B in 3G, eNB in LTE (4G), and gNB in 5G. The term is used in the context of mobile.

The BSC manages the radio resources for one or more BTSs. It handles radio channel setup, frequency hopping, and handovers. The BSC is the connection between the mobile and the MSC. The BSC also translates the 13 Kbps voice channel used over the radio link to the standard 64 Kbps channel used by.

Base stations play a pivotal role in mobile telecommunications, acting as the nexus between users' cell phones and the broader network infrastructure. Understanding how these stations function is essential for anyone engaged in the field of telecommunications or simply interested in the mechanics.

A base station is a critical component of wireless communication networks. It



serves as the central point of a network that connects various devices, such as smartphones, tablets, and computers. The base station transmits and receives signals, ensuring seamless communication over radio frequencies.



Base station communication channel



[Base Station's Role in Wireless Communication Networks](#)

The base station transmits and receives signals, ensuring seamless communication over radio frequencies. In essence, it acts as the intermediary between the ...

Base station

Overview
Wireless communications
Land surveying
Computer networking
See also

In radio communications, a base station is a wireless communications station installed at a fixed location and used to communicate as part of one of the following:

- o a push-to-talk two-way radio system, or;
- o a wireless telephone system such as cellular CDMA or GSM cell site.



[Understanding Base Stations: The Backbone of Wireless ...](#)

What is a Base Station? A base station is a fixed communication infrastructure that connects mobile devices (such as smartphones, tablets, or IoT devices) to a network, enabling ...

EMF

Each base station has a number of radio channels, or frequencies, to communicate with mobile phones. Because this number of frequencies is



limited, frequencies are often reused in ...

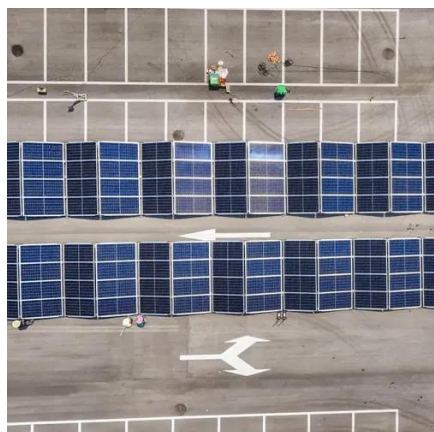


Flying Base Station Channel Capacity Limits: ...

We jointly study the mobility and the wireless communications of the flying base station to analyze its position, channel capacity, and ...

Flying Base Station Channel Capacity

We jointly study the mobility and the wireless communications of flying base station to analyze its position, channel capacity, and beneficialness (capacity gain) over the stationary ...



Base station

In heavily used systems, the capability for additional channels, where needed, is accomplished by installing an additional base station for each channel. Each base station appears as a single ...



GSM

It handles radio channel setup, frequency hopping, and handovers. The BSC is the connection between the mobile and the MSC. The BSC also translates the 13 Kbps voice channel used ...

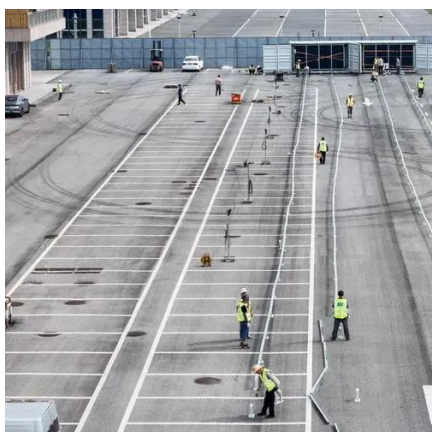


✓ LIQUID/AIR COOLING

✓ ON GRID/HYBRID

✓ PROTECTION IP54/IP55

✓ BATTERY /6000 CYCLES



Understanding Base Stations in Mobile ...

A base station is a fixed point that enables wireless communication between mobile devices and the network. These stations consist of radio ...

Base Stations

Base stations form a key part of modern wireless communication networks because they offer some crucial advantages, such as wide coverage, continuous communications and ...



EMF

Each base station has a number of radio channels, or frequencies, to communicate with mobile phones. Because this number of frequencies is ...



Base Station's Role in Wireless Communication Networks

The base station transmits and receives signals, ensuring seamless communication over radio frequencies. In essence, it acts as the intermediary between the user and the network, ...



Understanding Base Stations in Mobile Communication

A base station is a fixed point that enables wireless communication between mobile devices and the network. These stations consist of radio transceivers, antennas, and a controller which ...



Flying Base Station Channel Capacity Limits: Dependent on

We jointly study the mobility and the wireless communications of the flying base station to analyze its position, channel capacity, and beneficialness over the stationary ...



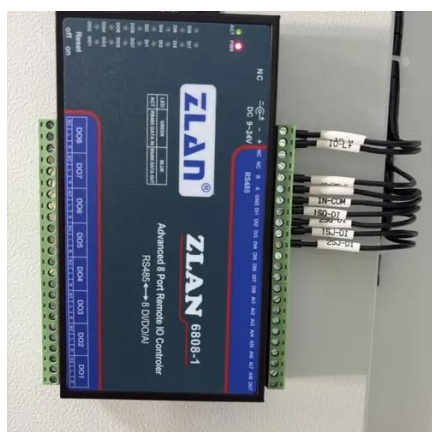
Base Stations

Base stations form a key part of modern wireless communication networks because they offer some crucial advantages, ...



[Choosing the Optimal Channels for Base Stations: A ...](#)

In this extensive article, we explore the various factors that influence channel selection for base stations, the impact of the wireless environment, and best practices for ...



Understanding Base Stations: The Backbone of Wireless Communication

What is a Base Station? A base station is a fixed communication infrastructure that connects mobile devices (such as smartphones, tablets, or IoT devices) to a network, enabling ...



Contact Us

For inquiries, pricing, or partnerships:

<https://www.sccd-sk.eu>

Phone: +32 2 808 71 94

Email: info@sccd-sk.eu

Scan QR code for WhatsApp.

