



Base station embedded power usage





Overview

This paper conducts a literature survey of relevant power consumption models for 5G cellular network base stations and provides a comparison of the models.

This paper conducts a literature survey of relevant power consumption models for 5G cellular network base stations and provides a comparison of the models.

Consequently, it is an area of focus during the development of hardware and software products as well as the standardization of network architectures and protocols. In order to quantify and optimize the energy consumption of mobile networks, theoretical models are required to estimate the effect of.

This thesis presents a comprehensive analysis of power consumption models of base stations. The research delves into the distribution of power consumption across different types of base stations, highlighting the significant role of power amplifiers in macro stations and baseband processing units.

With an ongoing energy crisis in Europe and an ever-evolving political climate where the environmental impacts of industries are regarded as a top priority, the topic of energy efficiency is high on everyone's agenda. Mathematical optimization of energy consumption requires a model of the problem.

However, there is still a need to understand the power consumption behavior of state-of-the-art base station architectures, such as multi-carrier active antenna units (AAUs), as well as the impact of different network parameters. In this paper, we present a power consumption model for 5G AAUs based.

Abstract: Base stations represent the main contributor to the energy consumption of a mobile cellular network. Since traffic load in mobile networks significantly varies during a working or weekend day, it is important to quantify the influence of these variations on the base station power.



Base station embedded power usage



Power consumption models of base station : measurements and ...

These insights highlight the need for ongoing research into better methods for accurately measuring and optimizing power consumption in base stations. This research is crucial for ...

[Comparison of Power Consumption Models for 5G Cellular ...](#)

Power consumption models for base stations are briefly discussed as part of the development of a model for life cycle assessment. An overview of relevant base station power ...



[Energy Consumption Modelling for 5G Radio Base Stations ...](#)

The CM data contains all parameters that are used to configure each radio base station in the network, including configured power, bandwidth, frequency, number of antennas, position, ...



Optimal energy-saving operation strategy of 5G base station with

To further explore the energy-saving potential of 5 G base stations, this paper proposes an energy-saving operation model for 5 G base stations that



incorporates ...



Power Consumption Modeling of 5G Multi-Carrier Base ...

We demonstrate that this model achieves good estimation performance, and it is able to capture the benefits of energy saving when dealing with the complexity of multi-carrier base stations ...

Front Line Data Study about 5G Power Consumption

Studies show that with 5G base stations, it is possible to download more than 5,000 HD movies using only 1 kWh, whereas with 4G, the same amount of power would allow for fewer than 200 ...



Comparison of Power Consumption Models for 5G Cellular Network Base

Power consumption models for base stations are briefly discussed as part of the development of a model for life cycle assessment. An overview of relevant base station power ...





Measurements and Modelling of Base Station Power Consumption under Real

Measurements show the existence of a direct relationship between base station traffic load and power consumption. According to this relationship, we develop a linear power consumption ...



Measurements and Modelling of Base Station Power ...

Measurements show the existence of a direct relationship between base station traffic load and power consumption. According to this relationship, we develop a linear power consumption

Measurements and Modelling of Base Station Power ...

Measurements show the existence of a direct relationship between base station traffic load and power consumption. According to this relationship, we develop a linear power consumption ...



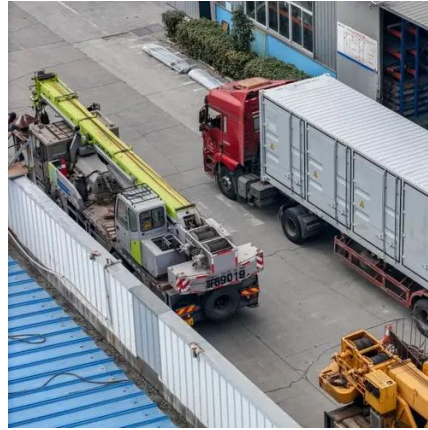
Power Consumption Assessment of Telecommunication Base Stations

Abstract: Energy consumed in telecommunication base stations is a significant part of the cellular network energy footprint. Efficient energy use, renewable energy sources, and ...



Modelling the 5G Energy Consumption using Real-world ...

To address this, we propose a novel deep learning model for 5G base station energy consumption estimation based on a real-world dataset. Unlike existing methods, our approach integrates ...





Contact Us

For inquiries, pricing, or partnerships:

<https://www.sccd-sk.eu>

Phone: +32 2 808 71 94

Email: info@sccd-sk.eu

Scan QR code for WhatsApp.

