



Base station is the communication terminal of mobile station





Overview

Base station (or base radio station, BS) is – according to the 's (ITU) (RR) – a " in the ." A base station is called in , in (), and in . The term is used in the context of ,

A base station is a fixed transceiver that serves as the central communication point for mobile devices within a defined geographical area, known as a cell. It is sometimes called a cell tower. Its function is to transmit and receive radio signals to and from wireless client devices.

A base station is a fixed transceiver that serves as the central communication point for mobile devices within a defined geographical area, known as a cell. It is sometimes called a cell tower. Its function is to transmit and receive radio signals to and from wireless client devices.

What is Base Station?

What is Base Station?

A base station represents an access point for a wireless device to communicate within its coverage area. It usually connects the device to other networks or devices through a dedicated high bandwidth wire of fiber optic connection. Base stations typically.

Base station (or base radio station, BS) is – according to the International Telecommunication Union 's (ITU) Radio Regulations (RR) [1] – a " land station in the land mobile service." A base station is called node B in 3G, eNB in LTE (4G), and gNB in 5G. The term is used in the context of mobile.

A base station is a critical component in a telecommunications network. A fixed transceiver that acts as the central communication hub for one or more wireless mobile client devices. In the context of cellular networks, it facilitates wireless communication between mobile devices and the core.

A base station plays a pivotal role in the realm of telecommunications, acting as the cornerstone of connectivity. It enables seamless communication by linking various wireless devices to broader networks, ensuring that data flows efficiently from one point to another. A base station is an integral.

Base stations are the foundational elements that make this connectivity possible,



acting as fixed points that bridge the gap between a mobile device's radio signal and the global wired network. They are communication hubs in a cellular network that ensure continuous service as users move throughout.

Base stations play a pivotal role in mobile telecommunications, acting as the nexus between users' cell phones and the broader network infrastructure. Understanding how these stations function is essential for anyone engaged in the field of telecommunications or simply interested in the mechanics.



Base station is the communication terminal of mobile station

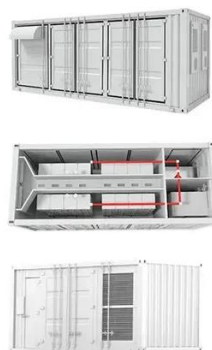


[What is a Base Station in Telecommunications?](#)

Base stations are the backbone of modern telecommunications networks, providing the essential infrastructure for wireless communication. They ...

Base Stations and Cell Towers: The Pillars of Mobile Connectivity

Base stations use antennas mounted on cell towers to send and receive radio signals to and from mobile devices within their coverage area. This communication enables ...



[What is a Base Station in Telecommunications?](#)

Base stations are the backbone of modern telecommunications networks, providing the essential infrastructure for wireless communication. They enable mobile devices to connect to the ...

[What Is a Base Station? Definition and How It Works](#)

A base station is a fixed transceiver that serves as the central communication point for mobile devices within a defined geographical area, known



as a cell. It is sometimes called ...

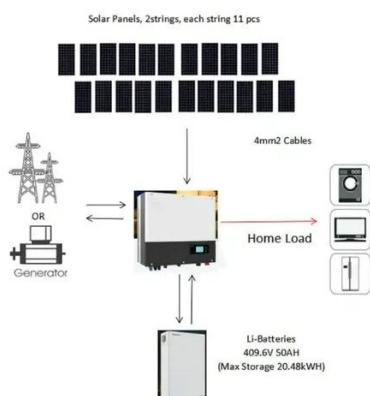


What is a base station?

In telecommunications, a base station is a fixed transceiver ...

What Is A Base Station?

A base station is an integral component of wireless communication networks, serving as a central point that manages the transmission and reception of signals between ...



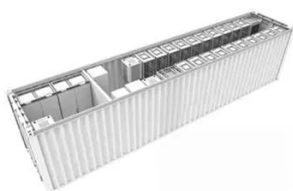
Base Stations

Base stations form a key part of modern wireless communication networks because they offer some crucial advantages, such as wide coverage, continuous communications and ...



What Is Base Station In Wireless Communication?

A base station, also known as a cell tower or base transceiver station (BTS), is a crucial component of wireless communication networks. It serves as the central point for ...



What is a base station?

In telecommunications, a base station is a fixed transceiver that is the main communication point for one or more wireless mobile client devices. A base station serves as ...

Understanding Base Stations in Mobile ...

A base station is a fixed point that enables wireless communication between mobile devices and the network. These stations consist of radio ...



Base station

OverviewLand surveyingComputer networkingWireless communicationsSee also

Base station (or base radio station, BS) is - according to the International Telecommunication Union's (ITU) Radio Regulations (RR) - a "land station in the land mobile service." A base station is called node B in 3G, eNB in LTE (4G), and gNB in 5G. The term is used in the context of mobile telephony, wireless computer networking



What is a Base Station? -- From Communication ...

Simply put, a base station (BS) is a wireless transceiver device in a mobile communication network that provides wireless ...



Base station

Base station (or base radio station, BS) is - according to the International Telecommunication Union 's (ITU) Radio Regulations (RR) [1] - a " land station in the land mobile service." A base ...

What is a Base Station? -- From Communication Core to ...

Simply put, a base station (BS) is a wireless transceiver device in a mobile communication network that provides wireless coverage and communicates with mobile ...



Understanding Base Stations in Mobile Communication

A base station is a fixed point that enables wireless communication between mobile devices and the network. These stations consist of radio transceivers, antennas, and a controller which ...





Contact Us

For inquiries, pricing, or partnerships:

<https://www.sccd-sk.eu>

Phone: +32 2 808 71 94

Email: info@sccd-sk.eu

Scan QR code for WhatsApp.

