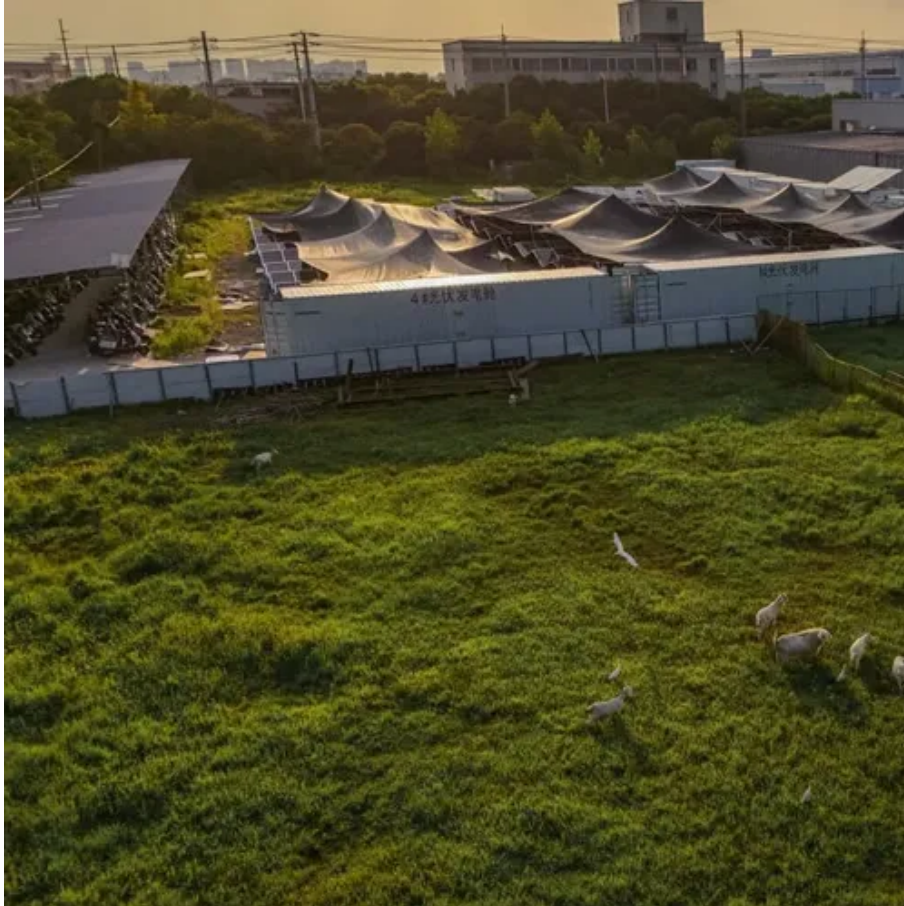




Base station maintenance power autumn inspection





Overview

Through the dual-track approach of “inspection plus rectification,” the maintenance work aims to ensure that all equipment operates at its best performance during the high-load winter period. Autumn is a crucial season for preparing the power grid for the winter.

Through the dual-track approach of “inspection plus rectification,” the maintenance work aims to ensure that all equipment operates at its best performance during the high-load winter period. Autumn is a crucial season for preparing the power grid for the winter.

When power base stations fail, entire cities can go dark – literally. The International Energy Agency reports that poorly maintained stations account for \$9.2 billion in annual economic losses globally. But how many operators truly understand the maintenance protocols that could prevent these.

Power plant maintenance plays a vital role, with studies showing that unplanned outages can cost the industry billions annually. Effective maintenance practices ensure continuous and efficient energy production, highlighting the necessity of thorough inspection services. These services are integral.

KUITUN, China, Sept. 25, 2024 /PRNewswire/ -- At present, the autumn inspection work of the power grid is being carried out in an orderly manner, and the State Grid Kuitun Power Supply Company actively uses infrared temperature measurement, ultrasonic local discharge, drones, live work robots and.

Regular electrical substation preventative maintenance reduces the risk of catastrophic failure, allowing you to sleep soundly. Substation maintenance inspections include testing, repairing and replacing vital substation equipment and schedule impending maintenance tasks via a preventative.

Power station maintenance can be broadly categorized into three main types: Preventive maintenance involves regular inspections, servicing, and replacement of components based on predetermined schedules or manufacturer recommendations. It aims to prevent breakdowns, improve equipment life, and.

This blog post will explore best practices for power plant maintenance, focusing on



strategies that optimize performance and extend the operational lifespan of these complex systems. 1. Implement a Comprehensive Preventive Maintenance Program The cornerstone of effective power plant maintenance is.



Base station maintenance power autumn inspection



[103 BEST Tips Maintenance Of Power Stations \(EASY\)](#)

Q: Can power station maintenance be performed while the power station is operating? Certain maintenance activities can be performed while the power station is in ...

Autumn Inspection Strengthens Power Network for Winter Peak ...

Autumn is a crucial season for preparing the power grid for the winter. The State Grid Anyang Power Supply Company has fully launched this year's autumn inspection, ...



Maintenance Best Practices, Intervals, and Asset Management ...

Along with our recommendations, we've included survey results of maintenance schedules from individuals within the electrical utility. The information is included in the handout for your ...



Streamlining Power Plant Maintenance: A Guide to Effective Inspection

This guide will delve into the importance of effective inspection services in power plant



maintenance. It will explore how these services contribute to the smooth functioning of ...



[Power Base Stations Maintenance Guide , HuiJue Group E-Site](#)

Recent data from GridWatch reveals a startling pattern: 62% of maintenance teams still rely on manual inspection sheets, while 84% of station components exceed recommended service ...



[Electrical Substation Maintenance Best Practices , 60 Hertz](#)

Ensure reliable power with electrical substation maintenance. Our proven preventive maintenance checklist and CMMS solutions reduce risk and boost efficiency.



[Electrical substation maintenance inspection checklist](#)

Download this free electrical substation maintenance inspection checklist to complete regular inspections of your substations and conduct preventive maintenance to avoid power outages ...





[State Grid Xuzhou Power Supply Company: Comprehensive Autumn](#)

As of now, the autumn inspection activities are progressing in an orderly manner. State Grid Xuzhou Power Supply Company continues to dynamically refine its inspection ...



[Power Plant Maintenance: Best Practices for Optimal ...](#)

This blog post will explore best practices for power plant maintenance, focusing on strategies that optimize performance and extend the operational lifespan of these complex ...



Science and technology help play a good autumn inspection ...

Undertake complex, difficult, dangerous and heavy operations of substation, and effectively improve the inspection efficiency of equipment. The robot has sensitive "eyes" that ...



Streamlining Power Plant Maintenance: A Guide to Effective ...

This guide will delve into the importance of effective inspection services in power plant maintenance. It will explore how these services contribute to the smooth functioning of ...



- 50KW/100KWH
- HIGHER POWER OUTPUT IN OFF-GRID MODE
- CONVENIENT OPERATION & MAINTENANCE
- PRE-WIRED



[Electrical Substation Maintenance Best Practices , 60 Hertz](#)

Q: Can power station maintenance be performed while the power station is operating? Certain maintenance activities can be ...





Contact Us

For inquiries, pricing, or partnerships:

<https://www.sccd-sk.eu>

Phone: +32 2 808 71 94

Email: info@sccd-sk.eu

Scan QR code for WhatsApp.

