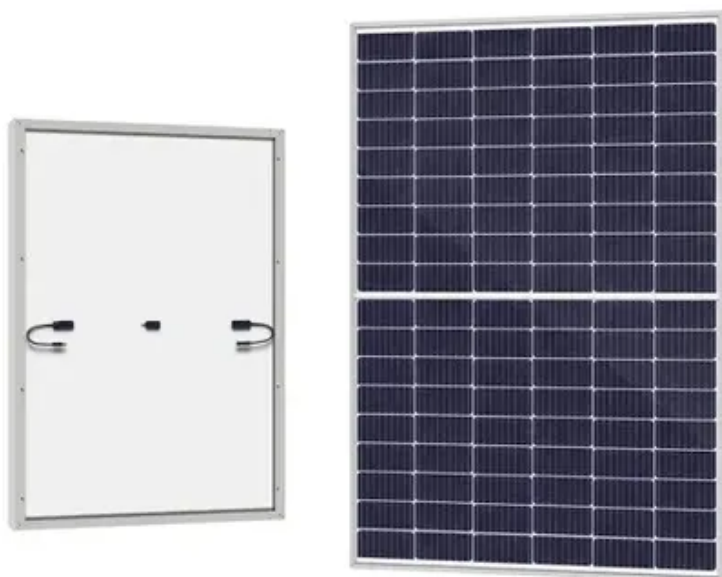




Base station wind power supply life





Overview

For providing continuous service, BSs located in remote and inaccessible areas require an uninterruptible long life and a safe power supply.

For providing continuous service, BSs located in remote and inaccessible areas require an uninterruptible long life and a safe power supply.

Since base stations are major consumers of cellular networks energy with significant contribution to operational expenditures, powering base stations sites using the energy of wind, sun, fuel cells or a combination gain mobile operators' attention. It is shown that powering base station sites with.

Under the “dual carbon” goals, enhancing the energy supply for communication base stations is crucial for energy conservation and emission reduction. An individual base station with wind/photovoltaic (PV)/storage system exhibits limited scalability, resulting in poor economy and reliability. To.

In this study, wind turbines are investigated as a potential source of renewable electricity for rural areas' cellular base stations. By analyzing the feasibility, cost-effectiveness, and technical requirements of implementing wind turbine energy systems for base stations, this paper provides.

Today, wind power is generated almost completely using wind turbines, generally grouped into wind farms and connected to the electrical grid. In 2024, wind supplied about 2,500 TWh of electricity, which was over 8% of world electricity. [1] With about 100 GW added during 2021, mostly in China and.

Very simply, supply must be continuously matched to demand. There is no large-scale storage of electricity on the grid. What is the difference between base and peak load?

Load is the amount of power in the electrical grid. Base load is the level that it typically does not go below, that is, the.

Therefore, wind turbines can serve as supplementary power at night or on rainy days to continuously generate electricity and ensure the stable operation of base stations. 2. Wind-solar hybrid systems can reduce reliance on energy storage For a



single energy system, such as pure photovoltaic or wind.



Base station wind power supply life



Battery load of base station wind power supply

This study presents modeling and simulation of a stand-alone hybrid energy system for a base transceiver station (BTS). The system is consisted of a wind and turbine photovoltaic (PV)

Technical feasibility assessment of a standalone photovoltaic/wind

In this paper, a standalone photovoltaic/wind/adiabatic compressed air energy storage based hybrid energy supply system for rural mobile base station is proposed.



Renewable Energy Sources for Power Supply of Base Station Sites

It is shown that powering base station sites with such renewable energy sources can significantly reduce energy costs and improve the energy efficiency of the base station sites in



Research on Capacity Optimization Configuration of Wind/PV

Under the "dual carbon" goals, enhancing the energy supply for communication base stations is crucial for energy conservation and emission



reduction. An individual base station with ...



[National Wind Watch , The Grid and Industrial Wind Power](#)

Base load is typically provided by large coal-fired and nuclear power stations. They may take days to fire up, and their output does not vary.

[Technical feasibility assessment of a standalone ...](#)

In this paper, a standalone photovoltaic/wind/adiabatic compressed air energy storage based hybrid energy supply system for rural mobile base station is proposed.



[Wind Data and Tools , Wind Research , NLR](#)

NLR has developed an interactive map and geospatial data showing wind supply curves, which characterize the quantity and quality of land-based and offshore wind resources. ...



DESIGN AND SIMULATION OF WIND TURBINE ENERGY ...

By analyzing the feasibility, cost-effectiveness, and technical requirements of implementing wind turbine energy systems for base stations, this paper provides recommendations for future ...



Wind power

[5] Wind power is a sustainable, renewable energy source, and has a much smaller impact on the environment than burning fossil fuels. Wind power is variable, so it needs energy storage or ...

Solar-Wind Hybrid Power for Base Stations: Why It's Preferred

For a single energy system, such as pure photovoltaic or wind power, a base station needs to be equipped with a 5-7 day energy storage battery. In contrast, wind-solar ...



Renewable Energy Sources for Power Supply of Base ...

Abstract -- An overview of research activity in the area of powering base station sites by means of renewable energy sources is given. It is shown that mobile network operators express ...



Contact Us

For inquiries, pricing, or partnerships:

<https://www.sccd-sk.eu>

Phone: +32 2 808 71 94

Email: info@sccd-sk.eu

Scan QR code for WhatsApp.

