



# Basic functions of site energy





## Overview

---

Site energy refers to the total amount of energy consumed at a specific location, such as a building, facility, or campus. This includes the energy used to power the lights, heating and cooling systems, and all the equipment and appliances in the building/project.

Site energy refers to the total amount of energy consumed at a specific location, such as a building, facility, or campus. This includes the energy used to power the lights, heating and cooling systems, and all the equipment and appliances in the building/project.

Looking at site energy can help you understand how the energy use for an individual building has changed over time. Site energy may be delivered to a building in one of two forms: primary or secondary energy. Primary energy is the raw fuel that is burned to create heat and electricity, such as.

It is the most intimate and immediate measurement of our life within four walls. Site Energy is simply the amount of heat and electricity delivered to and consumed by a building, the number that appears directly on your monthly utility statement. It represents the total kilowatt-hours of.

For our purposes, energy is commonly measured in Btus (U.S. units) or kWh (metric units); for reference, the definition of a Btu, or British thermal unit, is the energy it takes to heat one pound of water by one degree Fahrenheit. Note that kWh, although it is typically used for electricity, is a.

f evaluation. Source energy represents the total amount of raw fuel that is required to operate the building. It incorporates all transmission, delivery, and production losses. By taking all energy use into account, the score provides a complete assessment of energy efficiency utility bills.

Site energy refers to the amount of energy metered at the point of use (e.g. consumed by a building). Site energy may refer to both primary energy (natural gas or fuel consumed on site) and secondary energy (heat or electricity created from raw fuel). Source energy has a larger scope, referring to.

When we talk about site energy, we're essentially discussing the total energy



consumed right where it's used - think of it as the "home cooking" version of power generation. Unlike distant power plants sending electricity through wobbly transmission lines, site energy systems operate like a.



## Basic functions of site energy



### Site and source energy

Site energy refers to the total amount of energy consumed at a specific location, such as a building, facility, or campus. This includes the energy used to power the lights, heating and ...

### Site Energy -> Term

Academically, Site Energy is the standardized, boundary-defined operational energy metric, essential for building code compliance but inherently limited by its exclusion of ...



### Microsoft Word

Source energy is a measure that accounts for the energy consumed on site in addition to the energy consumed during generation and transmission in supplying the energy to your site.

### Energy Basics

Energy Basics gives a broad overview of energy sources, systems, transformations, and storage. It provides basics on renewable flows like solar, wind, and hydro and fuels (fossil fuels, ...



## Energy Basics

Energy services are what humans care about, like hot showers and cold beverages. There are energy losses each time we convert energy from one form to another. Energy systems are ...



## Energy Basics

Energy services are what humans care about, like hot showers and cold beverages. There are energy losses each time we convert energy from ...



## Source vs. Site Energy Solutions

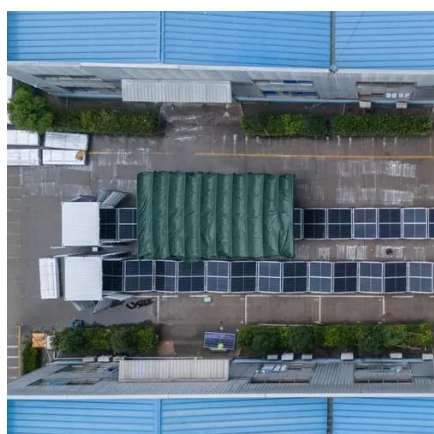
Site energy refers to the amount of energy metered at the point of use (e.g. consumed by a building). Site energy may refer to both primary energy (natural gas or fuel consumed on site) ...





## 1-iiiiiii't~

Source energy accounts for total energy use utility bills. Looking at site energy can help you understand how the energy use for an individual building has changed energy. Primary ...



### The Difference Between Source and Site Energy

You're probably already familiar with site energy, which is the amount of heat and electricity consumed by a building as reflected in your utility bills. Looking at site energy can help you ...

### **Demystifying Site Energy: The Hidden Power Source in Your ...**

Unlike distant power plants sending electricity through wobbly transmission lines, site energy systems operate like a self-sufficient kitchen, producing and consuming energy on-premises.



### **Glossary**

Includes the primary energy (natural gas, petroleum products, and renewable energy) and the electricity used in the building. Includes small-scale solar electricity generated and consumed ...



## Contact Us

---

For inquiries, pricing, or partnerships:

<https://www.sccd-sk.eu>

Phone: +32 2 808 71 94

Email: [info@sccd-sk.eu](mailto:info@sccd-sk.eu)

Scan QR code for WhatsApp.

