



# Battery cabinet capacitance test





## Overview

---

This post demonstrates the procedure to test the capacity of a battery. The test will determine and compare the battery's real capacity to its rated capacity. A load bank, voltmeters, and an amp meter will be utilized to discharge the battery at a specific.

This post demonstrates the procedure to test the capacity of a battery. The test will determine and compare the battery's real capacity to its rated capacity. A load bank, voltmeters, and an amp meter will be utilized to discharge the battery at a specific.

Battery-capacity testing is an essential part of battery maintenance. But how do you perform a capacitance test effectively?

Did you know there are different styles of capacity or "discharge" test depending on the application of the batteries under test?

how does a "constant power" test on a UPS.

This post demonstrates the procedure to test the capacity of a battery. The test will determine and compare the battery's real capacity to its rated capacity. A load bank, voltmeters, and an amp meter will be utilized to discharge the battery at a specific current till a minimum voltage is.

Battery capacity testing is a critical process in evaluating the performance, health, and reliability of batteries used in various applications, from consumer electronics to electric vehicles and renewable energy storage systems. Battery capacity, typically measured in ampere-hours (Ah) or.

A crucial piece of equipment in the lithium battery manufacturing process is the lithium battery formation and capacitance tester cabinet. This article aims to provide a comprehensive understanding of what this device is and its significance. A lithium battery formation and capacitance tester.

Perform a capacity test when the battery is new as part of the acceptance test. Perform an impedance test at the same time to establish baseline values for the battery. Repeat the above within 2 years for warranty purposes. Perform an



impedance test every year on flooded cells and quarterly on VRLA.

The table below shows how different types of tests impact battery safety and maintenance decisions. Battery capacity testing measures how much energy a battery can store and deliver, helping you know if it still works well. Regular testing keeps your equipment safe by spotting problems early.



## Battery cabinet capacitance test



### What is a Lithium Battery Formation and Capacitance Tester ...

Learn what a lithium battery formation and capacitance tester cabinet is. This article provides a detailed introduction to its definition, working principle, significance in the lithium battery industry.

### Main Battery Change

Going to change the service battery in my 15 V40cc D2. Anything I need to be ware of or look out for ??



### What is a Lithium Battery Formation and Capacitance Tester Cabinet

Learn what a lithium battery formation and capacitance tester cabinet is. This article provides a detailed introduction to its definition, working principle, significance in the lithium battery industry.



### [Battery Capacity Testing: Methods, Importance, ...](#)

This article explores the fundamentals of battery capacity testing, including key methodologies, equipment used, factors affecting ...



### What is battery capacity cabinet?

Battery capacity cabinets, also known as battery discharge cabinets, are essential devices for testing the capacity of batteries. These cabinets are designed to simulate a load on ...



### Battery Recycling for Businesses

Battery Recycling for Businesses Use the chart below to determine how to handle used batteries generated by your business. Batteries that are considered hazardous must be recycled or ...



### [How to Perform Battery Capacity Testing and Why It Matters](#)

Battery capacity testing ensures safety and reliability. Learn methods, intervals, calculation, equipment, and tips to avoid common battery testing mistakes.





## [Step-by-Step Battery Capacity Testing Procedure](#)

With our step-by-step procedure, you'll learn how to precisely evaluate battery capacity. Discover key tools, techniques, & best ...

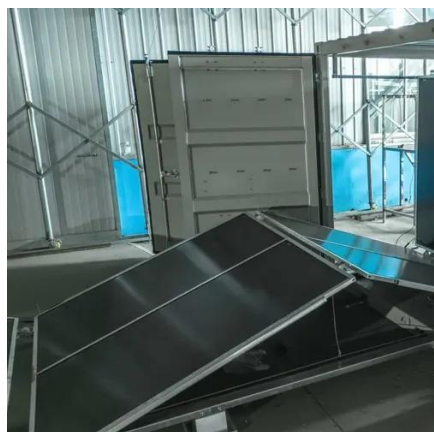


## [Battery replacement question. , Volvo V40 Forums](#)

The main battery is the one to look at. The secondary battery is only connected to the car by a relay for a fraction of a second during an engine restart from a stop/start event, ...

## [Low battery charge error , Volvo V40 Forums](#)

Hello everyone, I just bought my first car, a 2014 Volvo V40 T3, and a warning appears on the dashboard that says 'low battery charge.' The car is recently



## **Low battery charge message**

The low battery charge message relates to the main battery. On vehicles with stop/start systems and intelligent alternators, the vehicle battery is designed to operate at ...



## Battery

How do you charge the small battery - I charge the main battery to show full, but the auxiliary battery loses charge if listening to the radio when stationary. podger



## Battery Testing Guide

Perform an impedance test at the same time to establish baseline values for the battery. Repeat the above within 2 years for warranty purposes. Perform an impedance test every year on ...

## Household Battery Recycling

Household battery recycling locations Lead-acid batteries, or "automotive type batteries," are banned from disposal. Consumers may bring lead-acid batteries to any Wisconsin retailer that ...



## [Low Battery warning , Volvo V40 Forums](#)

Battery is easy to do yourself if you're at all handy around a screw driver and a spanner, just remember to reset the battery management system before you start using the ...





## New Battery

So I think the time has come to replace the main battery. Its the original Volvo 70ah EFB battery that was on the car from new in 2016.. The car starts fine but I keep getting the ...



## [Step-by-Step Battery Capacity Testing Procedure](#)

With our step-by-step procedure, you'll learn how to precisely evaluate battery capacity. Discover key tools, techniques, & best practices for achieving consistent results and ...

## [How to Test Battery Capacity? A Complete Guide ...](#)

This guide explores the science behind capacity testing, practical methods, and when to perform these tests--helping you ...



## **Testing of the Battery Capacity: Definition, Working Principle**

Capacity testing is a method for determining whether a battery meets the manufacturer's specified battery capacity rating. The process is made successful through ...



## [How to Test Battery Capacity? A Complete Guide for Optimal](#)

This guide explores the science behind capacity testing, practical methods, and when to perform these tests--helping you maximize battery lifespan and performance.



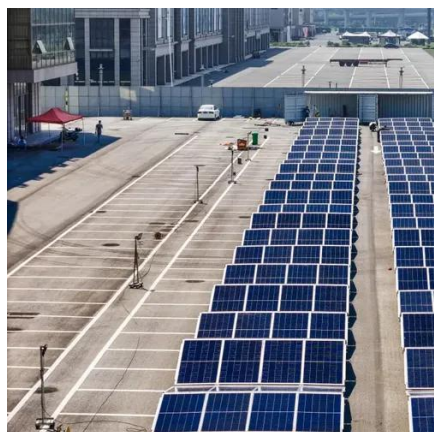
### **Battery issues**

I've had both batteries replaced (with the correct models), done a 100 mile trip, overnight smart battery charge, charging voltage is fine, system messages cleared but I am ...



### **Battery Capacity Testing: Methods, Importance, and Best Practices**

This article explores the fundamentals of battery capacity testing, including key methodologies, equipment used, factors affecting test results, and best practices for obtaining ...



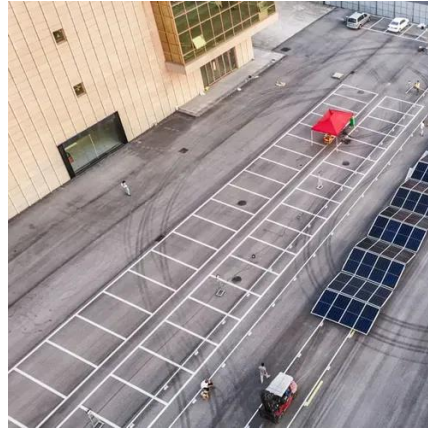
### **Benefits of Battery Testing**

Battery-capacity testing is an essential part of battery maintenance. But how do you perform a capacitance test effectively?



## Battery Capacity Testing

Battery capacity testing measures the total amount of electrical energy a battery can store and deliver, expressed in ampere-hours (Ah) or watt-hours (Wh). Unlike simple ...





## Contact Us

---

For inquiries, pricing, or partnerships:

<https://www.sccd-sk.eu>

Phone: +32 2 808 71 94

Email: [info@sccd-sk.eu](mailto:info@sccd-sk.eu)

Scan QR code for WhatsApp.

