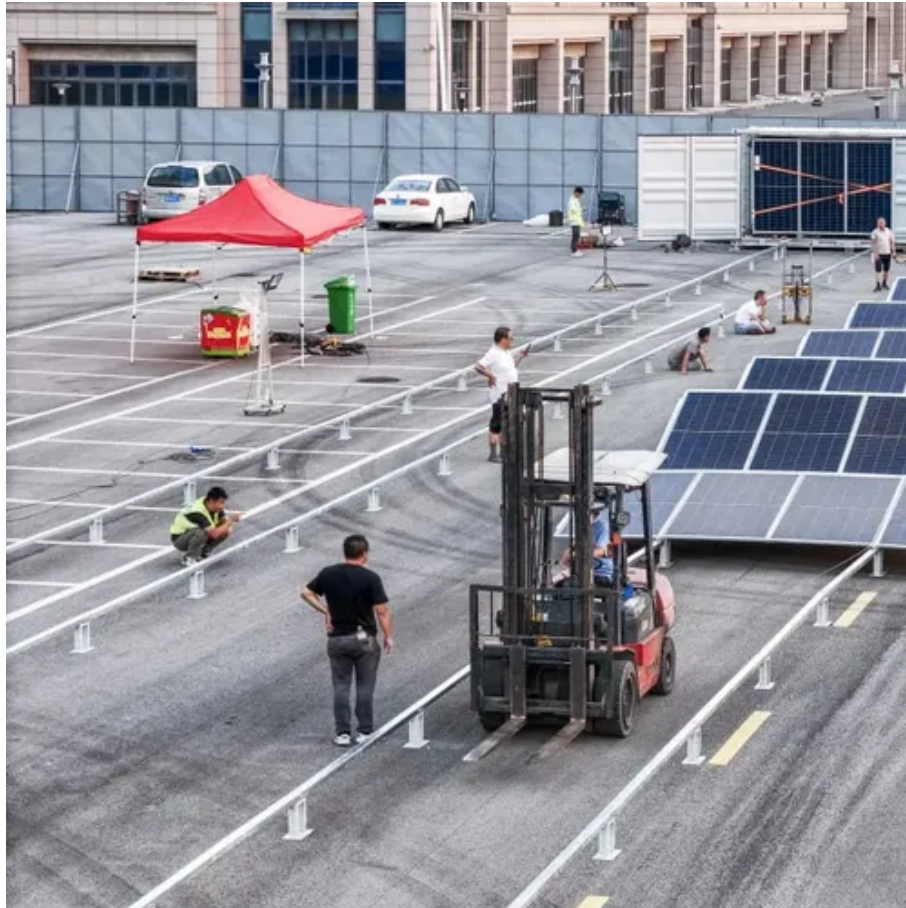




Battery cabinet processing factory





Battery cabinet processing factory

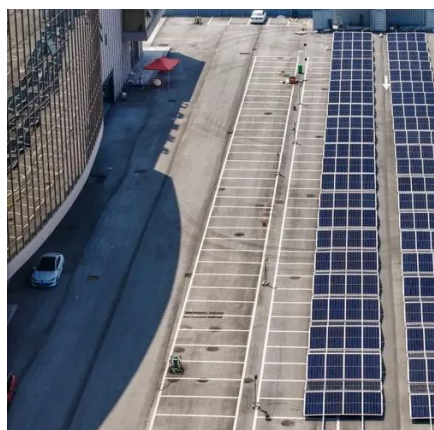


[Battery replacement question. , Volvo V40 Forums](#)

The main battery is the one to look at. The secondary battery is only connected to the car by a relay for a fraction of a second during an engine restart from a stop/start event, ...

Household Battery Recycling

Household battery recycling locations Lead-acid batteries, or "automotive type batteries," are banned from disposal. Consumers may bring lead-acid batteries to any Wisconsin retailer that ...

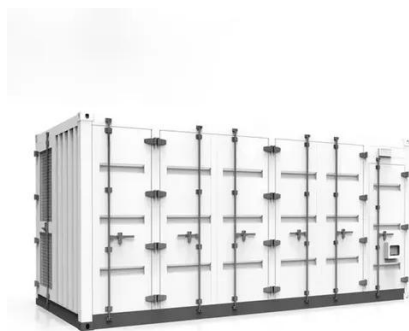


EFB or AGM Upgrade

Hi, Main battery needs changed, currently has the OEM EFB battery. Thinking of upgrading to an AGM Battery, has anyone done this and had any issues??

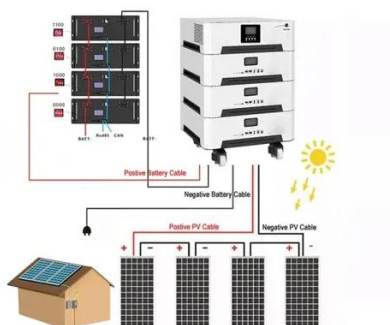
Low battery charge message

The low battery charge message relates to the main battery. On vehicles with stop/start systems and intelligent alternators, the vehicle battery is designed to operate at ...



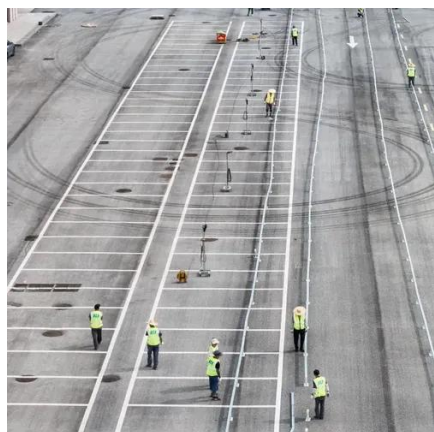
New Battery

So I think the time has come to replace the main battery. Its the original Volvo 70ah EFB battery that was on the car from new in 2016.. The car starts fine but I keep getting the ...



[Low battery charge error , Volvo V40 Forums](#)

Hello everyone, I just bought my first car, a 2014 Volvo V40 T3, and a warning appears on the dashboard that says 'low battery charge.' The car is recently



Main Battery Change

Going to change the service battery in my 15 V40cc D2. Anything I need to be ware of or look out for ??



Battery issues

I've had both batteries replaced (with the correct models), done a 100 mile trip, overnight smart battery charge, charging voltage is fine, system messages cleared but I am ...



Battery Recycling for Businesses

Battery Recycling for Businesses Use the chart below to determine how to handle used batteries generated by your business. Batteries that are considered hazardous must be recycled or ...

Battery

How do you charge the small battery - I charge the main battery to show full, but the auxiliary battery loses charge if listening to the radio when stationary. podger





Contact Us

For inquiries, pricing, or partnerships:

<https://www.sccd-sk.eu>

Phone: +32 2 808 71 94

Email: info@sccd-sk.eu

Scan QR code for WhatsApp.

