



Battery installation in telesolar container communication station room





Overview

This article outlines the key requirements for telecom batteries used in indoor equipment rooms, with a focus on system design considerations rather than specific battery chemistries. Indoor equipment rooms are typically designed to support mission-critical telecom .

This article outlines the key requirements for telecom batteries used in indoor equipment rooms, with a focus on system design considerations rather than specific battery chemistries. Indoor equipment rooms are typically designed to support mission-critical telecom .

Sunway Ess battery energy storage system (BESS) containers are based on a modular design. They can be configured to match the required power and capacity requirements of client's application. Our containerised energy storage system(BESS) is the perfect solution for large-scale energy storage.

The Battery Energy Storage System Guidebook contains information, tools, and step-by-step instructions to support local governments managing battery energy storage system development in their communities. The Guidebook provides local officials with in-depth details about the permitting and.

Industrial battery rooms require careful design to ensure safety, compliance, and operational efficiency. This article covers key design considerations and relevant standards. 1. Space Planning and Layout 900mm min Battery Room Layout 1200mm Primary Access End Access 1000mm Battery Racks Industrial.

Battery systems pose unique electrical safety hazards. The system's output may be able to be placed into an electrically safe work condition (ESWC), however there is essentially no way to place an operating battery or cell into an ESWC. Someone must still work on or maintain the battery system.

The Battery Energy Storage System (BESS) container design sequence is a series of steps that outline the design and development of a containerized energy storage system. This system is typically used for large-scale energy storage applications like renewable energy integration, grid stabilization.

This is about design requirements for vented lead acid batteries, battery rooms



and battery installations in main and unit substations and electrical equipment rooms. It does not cover maintenance free or computer room type batteries and battery cabinets. Main keywords for this article are Battery.



Battery installation in telesolar container communication station room

[Battery Room Design Requirements - PAKTECHPOINT](#)



This is about design requirements for vented lead acid batteries, battery rooms and battery installations in main and unit substations and electrical equipment rooms.

[NFPA 70E Battery and Battery Room ...](#)

Proper procedures, tools, personal protective equipment (PPE) and ventilation might be specific to a battery installation. A qualified ...



[Telecom Battery Requirements for Indoor Equipment Rooms](#)

This article outlines the key requirements for telecom batteries used in indoor equipment rooms, with a focus on system design considerations rather than specific battery ...



[NFPA 70E Battery and Battery Room Requirements , NFPA](#)

Proper procedures, tools, personal protective equipment (PPE) and ventilation might be specific to a battery installation. A qualified employee

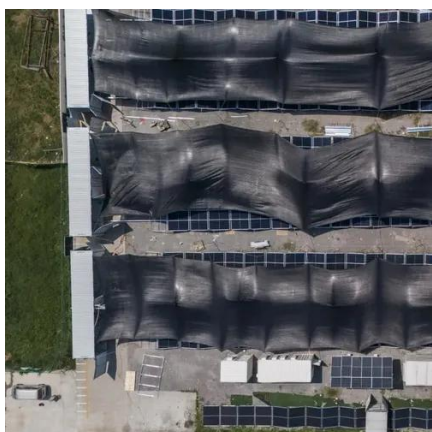


trained to establish an ESWC ...



Inside a Battery Container

The standard shipping container dimensions make transport less complex and more predictable, as it provides easy storing, stacking and installation. Off-hire and installation time ...



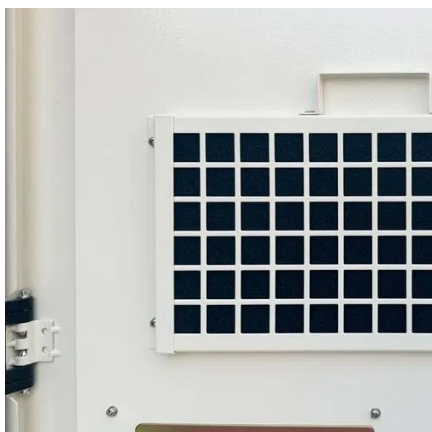
[Battery Room Design Aspects , PDF , Electrical ...](#)

This document outlines design requirements for battery rooms containing vented lead acid batteries. It specifies that battery rooms must be properly ...



[Battery requirements for high-altitude solar container ...](#)

Among various battery technologies, Lithium Iron Phosphate (LiFePO4) batteries stand out as the ideal choice for telecom base station backup power due to their high safety, long lifespan, and





Designing Industrial Battery Rooms: Fundamentals and Standards

Industrial battery rooms require careful design to ensure safety, compliance, and operational efficiency. This article covers key design considerations and relevant standards.



[Battery Room Design Requirements - ...](#)

This is about design requirements for vented lead acid batteries, battery rooms and battery installations in main and unit substations and electrical ...

[New York State Battery Energy Storage System Guidebook](#)

The Guidebook provides local officials with in-depth details about the permitting and inspection process to ensure efficiency, transparency, and safety in their communities.



[Battery Room Design Aspects , PDF , Electrical Substation](#)

This document outlines design requirements for battery rooms containing vented lead acid batteries. It specifies that battery rooms must be properly ventilated, include safety equipment ...



Inside a Battery Container

The standard shipping container dimensions make transport less complex and more predictable, as it provides easy storing, stacking ...



Requirements for battery rooms at communication base stations

This course describes the hazards associated with batteries and highlights those safety features that must be taken into consideration when designing, constructing and fitting out a battery room.

Designing a BESS Container: A Comprehensive Guide to Battery ...

Discover the essential steps in designing a containerized Battery Energy Storage System (BESS), from selecting the right battery technology and system architecture to ...





Contact Us

For inquiries, pricing, or partnerships:

<https://www.sccd-sk.eu>

Phone: +32 2 808 71 94

Email: info@sccd-sk.eu

Scan QR code for WhatsApp.

