



Battery issues for wind and solar complementary 5G solar container communication stations





Overview

Can solar power and battery storage be used in 5G networks?

1. This study integrates solar power and battery storage into 5G networks to enhance sustainability and cost-efficiency for IoT applications. The approach minimizes dependency on traditional energy grids, reducing operational costs and environmental impact, thus paving the way for greener 5G networks. 2.

Can distributed photovoltaic systems optimize energy management in 5G base stations?

This paper explores the integration of distributed photovoltaic (PV) systems and energy storage solutions to optimize energy management in 5G base stations. By utilizing IoT characteristics, we propose a dual-layer modeling algorithm that maximizes carbon efficiency and return on investment while ensuring service quality.

Are 5G base stations more energy efficient than 4G?

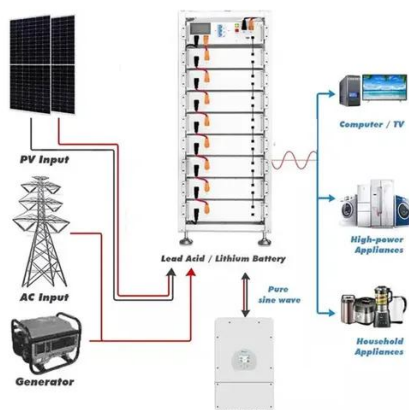
Research indicates that the energy consumption of 5G base stations is approximately three to four times higher compared to 4G base stations, raising concerns about sustainability and operational costs. The main reasons for this result are twofold. The theoretical peak downlink rate of 5G networks is 12.5 times that of 4G networks.

Can a bi-level model optimize photovoltaic capacity and battery storage capacity?

Energy efficiency and cost-effectiveness are two core considerations in the design and planning of modern communication networks. This research proposes a bi-level model algorithm (see Fig. 1) to optimize the photovoltaic capacity and battery storage capacity of hybrid energy supply base stations.



Battery issues for wind and solar complementary 5G solar container c

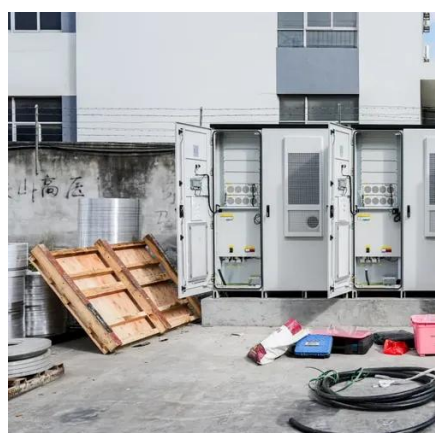


Optimal Scheduling of 5G Base Station Energy Storage Considering Wind

This research is devoted to the development of software to increase the efficiency of autonomous wind-generating substations using panel structures, which will allow the use of ...

Off-Grid Solar Power Systems for 5G Base Stations in Alpine ...

The system's core components include solar arrays, charge controllers, battery storage, inverters, and backup interfaces for diesel generators, all tailored to high-altitude and ...



Optimal Scheduling of 5G Base Station Energy Storage Considering Wind

This article aims to reduce the electricity cost of 5G base stations, and optimizes the energy storage of 5G base stations connected to wind turbines and photov

Building wind and solar complementary communication base ...

In today's 5G era, the energy efficiency (EE) of cellular base stations is crucial for sustainable



communication. Recognizing this, Mobile Network Operators are actively prioritizing EE for



[Optimal Scheduling of 5G Base Station Energy Storage ...](#)

This article aims to reduce the electricity cost of 5G base stations, and optimizes the energy storage of 5G base stations connected to wind turbines and photov

OPTIMAL DESIGN ANALYSIS OF WIND SOLAR COMPLEMENTARY POWER STATIONS

Base station operators deploy a large number of distributed photovoltaics to solve the problems of high energy consumption and high electricity costs of 5G base stations.



WO2024060817A1

Disclosed in the present invention is a wind-solar complementary 5G integrated energy-saving cabinet, comprising a cabinet body.



Integrating distributed photovoltaic and energy storage in 5G ...

This study integrates solar power and battery storage into 5G networks to enhance sustainability and cost-efficiency for IoT applications. The approach minimizes dependency on ...



Discharge rate of solar container battery in communication base ...

While maintaining the reliability, the backup batteries of 5G BSs have some spare capacity over time due to the traffic-sensitive characteristic of 5G BS electricity load.

Optimal Scheduling of 5G Base Station Energy Storage ...

This research is devoted to the development of software to increase the efficiency of autonomous wind-generating substations using panel structures, which will allow the use of ...



Optimal dimensioning of grid-connected PV/wind hybrid

In this context, the optimal design of hybrid renewable energy systems (HRES) that combine solar, wind, and energy storage technologies is critical for achieving sustainable and ...



Communication base station wind and solar complementary ...

The wind-solar-diesel hybrid power supply system of the communication base station is composed of a wind turbine, a solar cell module, an integrated controller for hybrid energy



OPTIMAL DESIGN ANALYSIS OF WIND SOLAR ...

Base station operators deploy a large number of distributed photovoltaics to solve the problems of high energy consumption and high electricity costs of 5G base stations.



Contact Us

For inquiries, pricing, or partnerships:

<https://www.sccd-sk.eu>

Phone: +32 2 808 71 94

Email: info@sccd-sk.eu

Scan QR code for WhatsApp.

