



Battery replacement bms management system





Overview

The modern battery management system changed a simple replacement into a calibration event. Battery replacement now requires communication between hardware and software. The next time a battery gets replaced, remember it involves more than a part swap. Resetting the.

The modern battery management system changed a simple replacement into a calibration event. Battery replacement now requires communication between hardware and software. The next time a battery gets replaced, remember it involves more than a part swap. Resetting the.

A battery management system (BMS) is any electronic system that manages a rechargeable battery (cell or battery pack) by facilitating the safe usage and a long life of the battery in practical scenarios while monitoring and estimating its various states (such as state of health and state of).

A Battery Management System (BMS) is an electronic control unit that monitors and manages rechargeable battery packs to ensure safe operation, optimal performance, and extended lifespan. This sophisticated technology acts as the brain of modern battery systems, protecting against dangerous.

BMS stands for “Battery Management System.” It’s the assembly that houses and keeps the batteries operational. The BMS monitors battery levels, optimizes battery performance, and controls battery temperature. A BMS reset restores the BMS to its default settings to make sure it works as intended.

The modern battery management system changed a simple replacement into a calibration event. Once upon a time, replacing a car battery took five minutes. You popped the hood, removed the old unit and installed a new one. Today’s internal combustion engine vehicles work very differently. Even.

If you own an electric vehicle (EV) or a newer gas-powered car, your vehicle likely has a complex battery management system (BMS) that carefully monitors the battery’s state of charge, health, temperature, and other key parameters. The BMS is critical for optimizing battery performance and.

A Battery Management System (BMS) is an essential component in modern battery-



powered applications, responsible for monitoring, protecting, and optimizing the performance of rechargeable batteries. As the demand for electric vehicles (EVs), renewable energy storage, and portable electronic devices.



Battery replacement bms management system

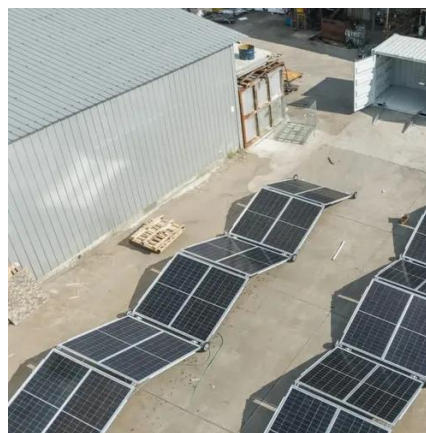


Battery management system

A battery management system (BMS) is any electronic system that manages a rechargeable battery (cell or battery pack) by facilitating the safe usage and a long life of the battery in ...

What Is a BMS Reset for Electric Vehicles? When and How to Do It

Learn about your car's battery management systems as well as when and how to do BMS resets in this article.



solar



[Battery Management Systems and 12 Volt Battery Service](#)

Why Battery Management Systems Matter Battery management systems control how the vehicle uses and protects electrical power. The BMS acts as the "brains" behind the ...

[What Is a BMS Reset for Electric Vehicles? When ...](#)

Learn about your car's battery management systems as well as when and how to do BMS resets in this article.



[What Is a Battery Management System \(BMS\)?](#)

Learn what a battery management system is, how it works, and why it's critical in EVs, ESS, and industrial battery applications.

A Complete Guide to Resetting Your Car's Battery Management ...

In this comprehensive guide, we'll cover everything you need to know about automotive BMS resets - what they are, when you need one, how to perform a reset, and more.



[Understanding Battery Management System \(BMS\) , Dorleco](#)

The Battery Management System (BMS) is vital to any energy storage, renewable energy, or electric vehicle system. By keeping an eye on and controlling many facets of the ...





[Battery Management System: Components, Types and Objectives](#)

What Is a Battery Management System (BMS)? Definition, Objectives, Components, Types, and Best Practices. A battery management system (BMS) is an electronic system ...



What is a Battery Management System? Complete Guide to BMS ...

A Battery Management System (BMS) is an electronic control unit that monitors and manages rechargeable battery packs to ensure safe operation, optimal performance, and ...

[Whitepaper: Understanding Battery Management Systems ...](#)

This whitepaper provides an in-depth look at Battery Management Systems, exploring their architecture, key features, and how they contribute to battery safety and longevity.



GRADE A BATTERY

LiFePO4 battery will not burn when overcharged, over discharged, overcurrent or short circuited and can withstand high temperatures without decomposition.



[What Is a Battery Management System \(BMS\)?](#)

Learn what a battery management system is, how it works, and why it's critical in EVs, ESS, and industrial battery applications.



A Complete Guide to Resetting Your Car's Battery Management System

In this comprehensive guide, we'll cover everything you need to know about automotive BMS resets - what they are, when you need one, how to perform a reset, and more.



[What is a Battery Management System and why is it needed?](#)

In a world increasingly powered by batteries--from electric cars to solar farms and smartphones--the Battery Management System (BMS) quietly plays a starring role. Often ...

[What is a Battery Management System? Complete ...](#)

A Battery Management System (BMS) is an electronic control unit that monitors and manages rechargeable battery packs to ensure ...





Contact Us

For inquiries, pricing, or partnerships:

<https://www.sccd-sk.eu>

Phone: +32 2 808 71 94

Email: info@sccd-sk.eu

Scan QR code for WhatsApp.

