



Beijing applies for EMS for base station room





Overview

- Beijing plans to deploy dense 5G-Advanced infrastructure, with 70 base stations per 10,000 residents and seamless coverage within its Fifth Ring Road, laying the foundation for a hyper-connected urban environment.

- Beijing plans to deploy dense 5G-Advanced infrastructure, with 70 base stations per 10,000 residents and seamless coverage within its Fifth Ring Road, laying the foundation for a hyper-connected urban environment.

The following timetable will be adopted since the first train on September 1, 2024.

Beijing EMS is a system of public ambulances in the city of Beijing that provide medical transport to hospitals for a fee. The United States embassy in China advises Americans that they "may be required to take taxis or other immediately available vehicles to the nearest major hospital" rather than.

BEIJING, April 10 (Xinhua) -- Beijing will achieve large-scale 5G application and comprehensive 5G integration across industries by the end of 2027, positioning itself as a leading national benchmark for 5G adoption, according to a three-year action plan unveiled by municipal authorities. The plan.

- Beijing plans to deploy dense 5G-Advanced infrastructure, with 70 base stations per 10,000 residents and seamless coverage within its Fifth Ring Road, laying the foundation for a hyper-connected urban environment. - The city's plan includes 100% 5G user penetration, 45% industrial adoption and.

Beijing has constructed about 114,500 5G base stations as of April, with a density of 52 stations per 10,000 people, ranking first in China, said an official on Friday. "Beijing is actively promoting a signal upgrade campaign, focusing on improving network coverage in key areas," said Su Shaolin.

China's capital city Beijing has completed the construction of around 47,000 5G base stations by the end of September, achieving almost full coverage of the ultrafast network across the city, according to data released by the Beijing Communications Administration on Wednesday. The development of 5G. What is Beijing EMS?



Beijing EMS is a system of public ambulances in the city of Beijing that provide medical transport to hospitals for a fee.

Are Ambulances registered outside of Beijing more expensive?

Ambulances registered outside of Beijing may charge lower fees than Beijing-registered providers. Ambulance operators include Beijing Emergency Medical Center, which was founded in 1983 as a collaboration between the Chinese and Italian governments. ^ "Medical Assistance".

What is a mobile base station?

After passing rigorous tests, this state-of-the-art technology is now poised for deployment on the battlefield. The mobile base station can provide unprecedented high-speed, low-latency, and secure data exchange services to at least 10,000 users within a 3km (1.8 mile) radius.



Beijing applies for EMS for base station room



[Beijing Leads the Nation in 5G Base Stations](#)

To accelerate the transition to 10-gigabit-per-second-speed for internet, Beijing has implemented several initiatives, including the country's first 10-gigabit optical network plan, ...

Beijing EMS

Beijing EMS is a system of public ambulances in the city of Beijing that provide medical transport to hospitals for a fee.



[\(a\) Administrative division of Beijing and \(b\) EMS ...](#)

Download scientific diagram , (a) Administrative division of Beijing and (b) EMS facility locations in Beijing from publication: Spatial accessibility of ...



[Beijing has built 90,000 5G base stations](#)

It is worth mentioning that the industrial Internet has connected a total of 98 secondary nodes to the national top node (Beijing), accounting for 33.9% of the total in the country, covering nine ...



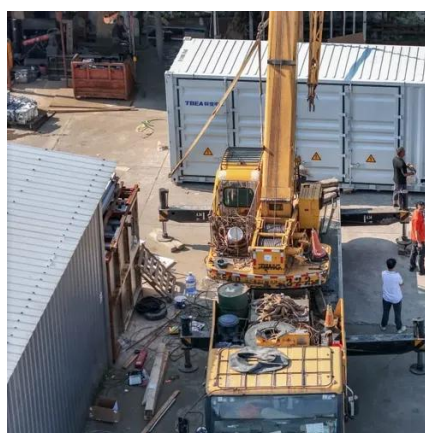
Beijing Builds over 110,000 5G Base Stations, Industrial News

In terms of 5G-A construction, they aim to promote the evolution and upgrading of communication infrastructure towards 10-gigabit optical networks, creating a leading city in ...



China introduces world's first mobile 5G base station for military use

After passing rigorous tests, this state-of-the-art technology is now poised for deployment on the battlefield. The mobile base station can provide unprecedented high-speed, ...



[China introduces world's first mobile 5G base ...](#)

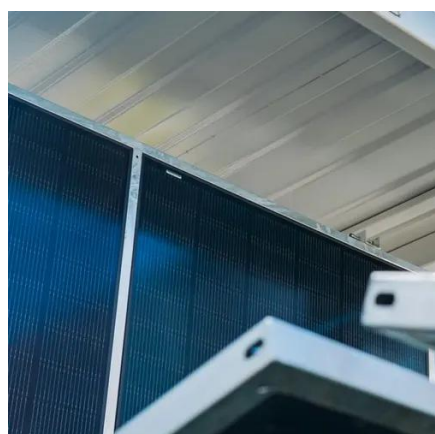
After passing rigorous tests, this state-of-the-art technology is now poised for deployment on the battlefield. The mobile base station can ...





(a) Administrative division of Beijing and (b) EMS facility locations

Download scientific diagram , (a) Administrative division of Beijing and (b) EMS facility locations in Beijing from publication: Spatial accessibility of emergency medical services under

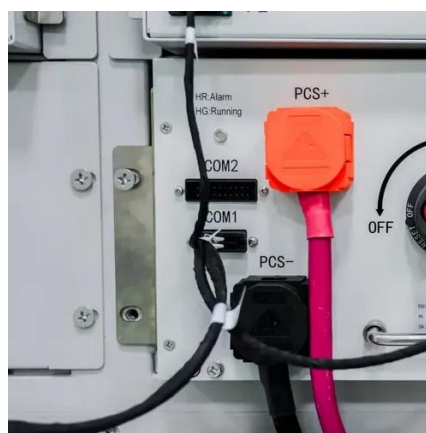


Biomedical Base

Station Facilities Toilets Close to the head of the train bound for Tiangong Yuan

Beijing Completes 47,000 5G Base Stations

China's capital city Beijing has completed the construction of around 47,000 5G base stations by the end of September, achieving almost full coverage of the ultrafast network across the city, ...



Beijing targets fully large-scale 5G applications by 2027

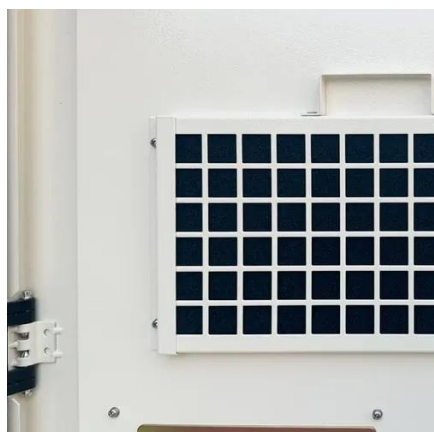
- Beijing plans to deploy dense 5G-Advanced infrastructure, with 70 base stations per 10,000 residents and seamless coverage within its Fifth Ring Road, laying the foundation ...





[Beijing projects fully large-scale 5G applications by 2027](#)

Infrastructure upgrades will deploy 70 5G and 5G-Advanced (5G-A) base stations per 10,000 residents, with over 35,000 new or upgraded 5G-A base stations to ensure ...



[Beijing targets fully large-scale 5G applications by ...](#)

- Beijing plans to deploy dense 5G-Advanced infrastructure, with 70 base stations per 10,000 residents and seamless coverage within ...



Contact Us

For inquiries, pricing, or partnerships:

<https://www.sccd-sk.eu>

Phone: +32 2 808 71 94

Email: info@sccd-sk.eu

Scan QR code for WhatsApp.

