



# Can 12v inverters be connected in series





## Overview

---

In a series inverter connection, multiple inverters are connected end-to-end. This configuration increases the total output voltage while keeping the current constant. For example, connecting two 12V inverters in series results in a total output of 24V.

In a series inverter connection, multiple inverters are connected end-to-end. This configuration increases the total output voltage while keeping the current constant. For example, connecting two 12V inverters in series results in a total output of 24V.

Wiring batteries in series is a common method used in solar power systems, RVs, golf carts, and other DC setups. 12V batteries are the most popular, offering flexibility for configuring direct current systems. This approach is essential when powering inverters or equipment that requires 24V, 36V, or.

When I add solar I plan on re-wiring and going to 24v DC input to the inverter, I plan on connecting two each of the 12v batteries in series to give me 24v. This will give me two sets of 24v 206ah. I will then parallel the sets together so I would have series-parallel set up with 24v coming into.

Upgrading your power system to 24V or 36V doesn't require buying new equipment. By wiring 12V LiFePO4 batteries in series, you can achieve higher voltage for heavy-duty applications like solar inverters or electric vehicles. Here's a comprehensive guide to do it safely and efficiently. Why Series.

An inverter is a device that converts direct current (DC) to alternating current (AC) at the specified voltage and frequency. Inverters accomplish this by utilizing thyristors with forced commutation or other semiconductor devices such as BJT, MOSFET, IGBT, and so on. Inverters are grouped into.

The primary difference between series and parallel inverter connections lies in how they affect voltage and current. In a series connection, the voltage increases while the current remains the same, making it suitable for applications requiring higher voltage. Conversely, in a parallel connection.

Can a 12V solar panel be connected to an automatic inverter?



Imagine connecting four 12V,10A,120W solar panels in a series-parallel setup. This way,you can double your system's output to 24V and 20A. It helps charge a big 24V,400Ah battery efficiently. This battery then works with an automatic.



## Can 12v inverters be connected in series

---

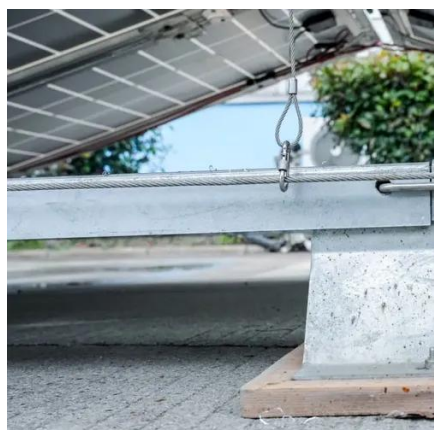


### **Step-by-Step Guide: How to Safely Wire 12V LiFePO4 Batteries in Series**

By wiring 12V LiFePO4 batteries in series, you can achieve higher voltage for heavy-duty applications like solar inverters or electric vehicles. Here's a comprehensive guide ...

### Can You Connect Inverters in Series?

Can You Connect Inverters in Series: Yes, you can. Just bear a few things in mind while connecting two power inverters in a series.



### **How to Safely Connect 12V Solar Panels in Series or Parallel**

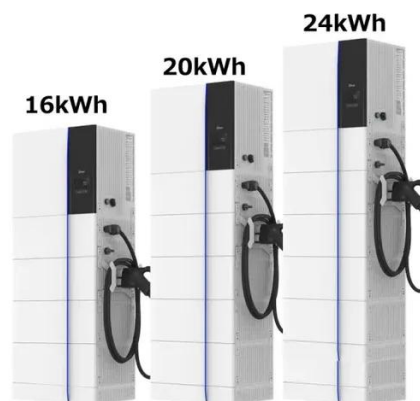
In a series connection, you link the positive end of one panel to the negative end of the next. This setup adds up the voltage from each panel. The current stays the same as just one panel. For ...

### **Can You Attach 2 Inverters to a Battery? Wiring Options for Off ...**

In a series configuration, two inverters are connected end-to-end, leading to increased voltage output while the current remains the



same. This wiring setup is beneficial ...



### [Connecting Multiple Batteries to an Inverter: Easy Guide](#)

Let's say you have a 12V inverter and try to connect two 12V batteries in series. You would end up inputting 24V to the inverter and cause an overload.

### [Connecting Multiple Batteries to an Inverter: Easy ...](#)

Let's say you have a 12V inverter and try to connect two 12V batteries in series. You would end up inputting 24V to the inverter and cause an ...



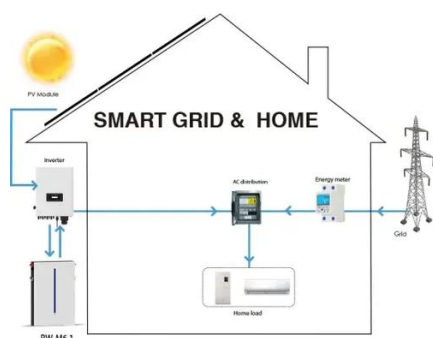
### [Complete Guide to Wiring Batteries in Series - PowMr](#)

This guide explains how to safely connect batteries in series, outlines key safety precautions, and explores how voltage and amp-hour ratings change. It also highlights the ...



## [How to use photovoltaic inverters in series](#)

Solar panels are connected in series to enhance voltage and meet the inverter's minimal working requirements. When solar modules are interconnected in parallel, one module's positive ...



## Two Inverters on one Battery Bank

It is possible to connect two inverters to the same battery bank. Either you choose inverters that can communicate with each other or you have two separate inverters powering a ...

## What Is the Difference Between Series and Parallel Inverter ...

The primary difference between series and parallel inverter connections lies in how they affect voltage and current. In a series connection, the voltage increases while the current ...



## [Complete Guide to Wiring Batteries in Series - ...](#)

This guide explains how to safely connect batteries in series, outlines key safety precautions, and explores how voltage and amp-hour ...



## Two Inverters on one Battery Bank

It is possible to connect two inverters to the same battery bank. Either you choose inverters that can communicate with each other ...



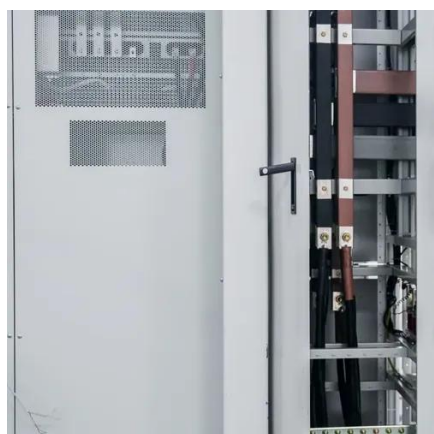
## Mixing 12v in Series and 24v

Some folks manage to make series LiFePO4 batteries work but a whole lot of people end up with out of balance batteries doing it that way. If at all possible I would avoid it.



## [Step-by-Step Guide: How to Safely Wire 12V ...](#)

By wiring 12V LiFePO4 batteries in series, you can achieve higher voltage for heavy-duty applications like solar inverters or electric ...



## [Can You Connect Inverters in Series?](#)

The primary difference between series and parallel inverter connections lies in how they affect voltage and current. In a series connection, the voltage increases while the current ...



## Contact Us

---

For inquiries, pricing, or partnerships:

<https://www.sccd-sk.eu>

Phone: +32 2 808 71 94

Email: [info@sccd-sk.eu](mailto:info@sccd-sk.eu)

Scan QR code for WhatsApp.

