



Can Swisscom s 5G base station be used





Can Swisscom s 5G base station be used



Inhouse Mobile Services, an in-building mobile network , Swisscom

With Swisscom's Inhouse Mobile Services solutions, you can take mobile communication within your business premises to a new level - and, thanks to 5G, your business mobile network is ...

5G mobile connection

Swisscom network customers can now benefit from ultra-fast 5G fixed wireless access technology. B2B customers can integrate sites without a fixed-line access into their ...



5G mobile connection

Swisscom network customers can now benefit from ultra-fast 5G fixed wireless access technology. B2B customers can integrate sites ...



- IP65/IP55 OUTDOOR CABINET
- OUTDOOR MODULE CABINET
- OUTDOOR ENERGY STORAGE CABINET
- 19 INCH

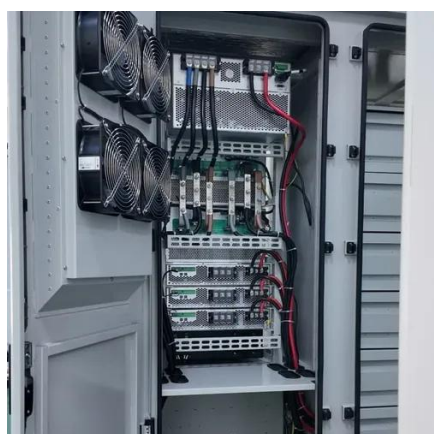
Can Swisscom s 5G base station be used

In NSA networking, 5G base stations cannot be deployed independently, requiring LTE base stations to be used as anchor points on the control plane for access to the core network.



Swisscom : Acceptance tests for 5G mobile base stations - new!

Since mobile base stations emit maximum power only when traffic load is at its peak, measurement of the maximum field strengths is rarely or not at all possible. If the mobile ...



New mobile opportunities with 5G from Swisscom , Swisscom

Swisscom provides 5G mobile coverage to 99% of the Swiss population. The very first generation of 5G devices only supports one frequency band with 5G (N78, 3.6 GHz), so these devices ...



Swisscom AG: Swisscom : Acceptance tests for 5G mobile base stations ...

Swisscom is a Switzerland-based telecommunication company that provides services such as telephony, TV and internet connectivity for residential and commercial sectors.





5G for Business , Swisscom

With dedicated 5G or 4G networks and network slicing, different bandwidths can be provided and guaranteed for business-critical applications. Clouds and existing network components can ...



Swisscom expands 5G indoor coverage for enterprise customers

Swisscom's "Enterprise Connect" network solution enables customers without a fiber or copper connection to integrate one or more business locations into their office networking ...

Swisscom Faces Setbacks as Court Imposes New 5G Permit Rules

Swisscom and other major telecommunications operators in Switzerland are encountering significant challenges in the ongoing expansion of 5G infrastructure due to a ...



[Acceptance tests for 5G mobile base stations , Swisscom](#)

Antennas for mobile communications, otherwise known as mobile base stations, are subject to a precautionary emission limitation in Switzerland.





Contact Us

For inquiries, pricing, or partnerships:

<https://www.sccd-sk.eu>

Phone: +32 2 808 71 94

Email: info@sccd-sk.eu

Scan QR code for WhatsApp.

