



# Can an inverter be used as a high voltage electrical appliance





## Overview

---

A power inverter, inverter, or invertor is a device or circuitry that changes (DC) to (AC). The resulting AC frequency obtained depends on the particular device employed. Inverters do the opposite of which were originally large electromechanical devices converting AC to DC.



## Can an inverter be used as a high voltage electrical appliance

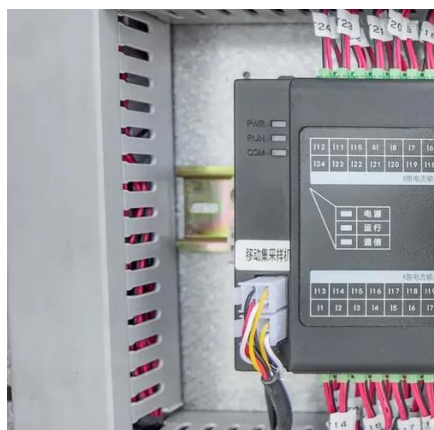


### Power inverter

A power inverter, inverter, or invertor is a power electronic device or circuitry that changes direct current (DC) to alternating current (AC). [1] The resulting AC frequency obtained depends on ...

### What Can a 5000 Watt Inverter Run? , Complete Guide for Home & RV Power

Whether you're living off-grid, preparing for an emergency, or powering an RV, this guide will help you understand what appliances and devices a 5000W inverter can handle -- ...



### [What Appliances can run on a Power Inverter?](#)

Using a power inverter can be a convenient and cost-effective way to run your 230V domestic appliances in places where there's no access to the mains. However, it's essential to know the ...

### [What Can a 5000 Watt Inverter Run? , Complete ...](#)

Whether you're living off-grid, preparing for an emergency, or powering an RV, this guide will help you understand what appliances and ...



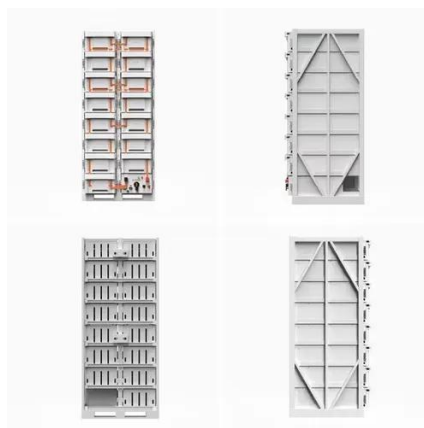
## [How do inverters convert DC electricity to AC?](#)

Appliances that need DC but have to take power from AC outlets need an extra piece of equipment called a rectifier, typically built from electronic components called diodes, ...



## [High Voltage Inverter: Unlocking the Potential of ...](#)

This article will discuss the definition, working principles, characteristics, and benefits of using high voltage inverter in renewable ...



## **Power inverter**

Overview  
Input and output  
Batteries  
Applications  
Circuit description  
Size  
History  
See also

A power inverter, inverter, or invertor is a power electronic device or circuitry that changes direct current (DC) to alternating current (AC). The resulting AC frequency obtained depends on the particular device employed. Inverters do the opposite of rectifiers which were originally large



electromechanical devices converting AC to DC.

## High Voltage Inverters: Understanding Its Benefits and Applications

High-voltage inverters play a crucial role in converting DC (direct current) into AC (alternating current) at higher voltage levels, making them ideal for various applications such ...



### What should you not plug into an inverter

An inverter operates safely within a designated power limit, and exceeding this capacity by plugging in too many devices or high draw ...

## Understanding the Limitations: What Appliances Should Not Be ...

In general, appliances that require high surge power, such as electric motors, pumps, or power tools, should not be used with an inverter unless explicitly specified by the ...



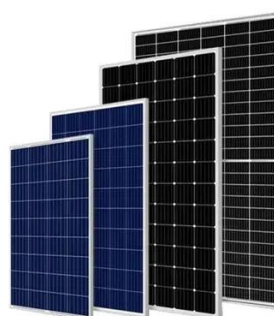
## High Voltage Inverter: Unlocking the Potential of High-Power ...

This article will discuss the definition, working principles, characteristics, and benefits of using high voltage inverter in renewable energy systems.



## High-voltage VS Low-voltage Inverters: What's the difference?

You'll learn what high-voltage and low-voltage inverters do, how they work, and where each type is best used. We'll also talk about the benefits and drawbacks of each, along ...

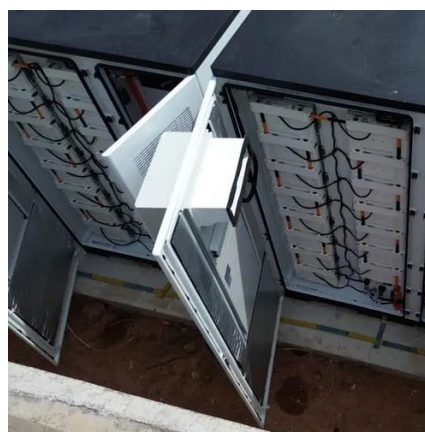


## What should you not plug into an inverter

An inverter operates safely within a designated power limit, and exceeding this capacity by plugging in too many devices or high draw items can lead to dangerous overload ...

## How do inverters convert DC electricity to AC?

Appliances that need DC but have to take power from AC outlets need an extra piece of equipment called a rectifier, typically built ...



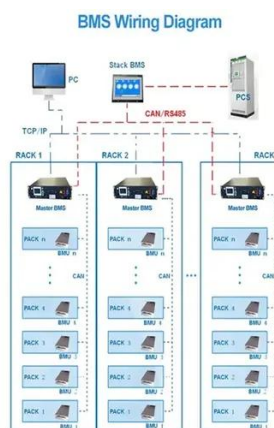


## ? Appliances You Can and Cannot Use with an Inverter - A Guide

Inverters have become a household essential for managing power outages and running appliances during blackouts. But not all appliances are suitable for inverter ...

### Understanding the Limitations: What Appliances Should Not Be Used ...

In general, appliances that require high surge power, such as electric motors, pumps, or power tools, should not be used with an inverter unless explicitly specified by the ...





## Contact Us

---

For inquiries, pricing, or partnerships:

<https://www.sccd-sk.eu>

Phone: +32 2 808 71 94

Email: [info@sccd-sk.eu](mailto:info@sccd-sk.eu)

Scan QR code for WhatsApp.

