



Can move temporary power supply box with electricity





Overview

One of the more common violations cited by OSHA is the improper use of conventional outlet boxes for temporary power applications. It is NOT acceptable to simply use wall boxes with cover plates in these application's. OSHA and the NFPA are clear in this regard.

One of the more common violations cited by OSHA is the improper use of conventional outlet boxes for temporary power applications. It is NOT acceptable to simply use wall boxes with cover plates in these application's. OSHA and the NFPA are clear in this regard.

Temporary electrical power is essential for industrial turnarounds, modern construction sites, and disaster recovery operations. However, the process of storing, transporting, and protecting transformers & distribution panels introduces challenges. As every manager knows, material handling.

However, temporary power is essential to construction worksites and poses a great risk to workers. Follow these steps to ensure proper safety procedures are met when working with or around temporary power. GFCI protection is required for all 125-volt, 15-, 20-, and 30-ampere receptacle outlets.

Whether you're working on a construction, renovation, or industrial project, reliable temporary power solutions are essential. Not only do they keep work moving quickly and efficiently, they ensure worker safety and code compliance. As federal and local regulations regarding jobsite safety evolve.

Temporary power planning is something that must be done on every project—whether you're connecting to an existing transformer, getting a power drop from a utility pole, or finding a solution for a remote site. No matter where your project is—downtown or out in the field—you need power. And not just.

Temporary power is a necessity on most construction sites, providing electricity for tools, lighting, and heavy equipment. However, improperly installed or poorly maintained power sources are a leading cause of construction-related fatalities. The numbers are sobering. They contribute to over 8% of.

Temporary power distribution boxes provide a safer way to manage power while



keeping your workspace tidy. These versatile units work great for construction sites, entertainment events, and disaster recovery operations. They handle everything from simple 120/240V single-phase loads to powerful.



Can move temporary power supply box with electricity

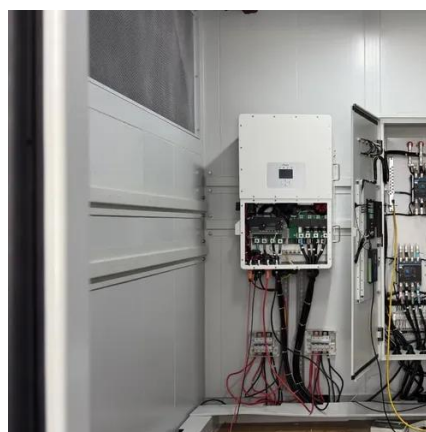


Temporary Power Safety

Whether you need an industrial portable power station, a complete jobsite power station, or help managing temporary wiring and distribution, this will help you stay compliant ...

[Temporary Power Safety Toolbox Talk , Mojo AI](#)

Learn why temporary power safety is crucial at construction sites and how to mitigate electrical hazards effectively with our temporary power safety toolbox talk.



[Temporary Power For Construction Sites:](#)

...

Temporary power for construction sites is necessary when looking to complete a project effectively. Here is a complete guide to help you ...



[Step-by-Step Guide: Temporary Construction Site Power](#)

Looking for temporary power for your construction site? Let us walk you through the process to ensure you don't miss any ...



[Step-by-Step Guide: Temporary Construction Site Power](#)

Looking for temporary power for your construction site? Let us walk you through the process to ensure you don't miss any important steps.



[The Ultimate Guide to Temporary Power Distribution Boxes](#)

Portability: Designed for easy transport and setup, temporary power distribution boxes can be quickly moved to different locations as needed. This makes them incredibly ...



[Temporary Power Planning In Construction](#)

Temporary power planning is something that must be done on every project--whether you're connecting to an existing transformer, getting a power drop from a ...





Temporary Power Safety Solutions

One of the more common violations cited by OSHA is the improper use of conventional outlet boxes for temporary power applications. It is NOT acceptable to simply use wall boxes with ...



Simplifying Temporary Power Distribution: Storing and Moving ...

Here's how to secure transformers and other temporary power distribution hardware on worksites by using engineered solutions to move key equipment.

[Temporary Jobsite Power Setup: NEC & OSHA Compliance Guide](#)

Whether you need an industrial portable power station, a complete jobsite power station, or help managing temporary wiring and distribution, this will help you stay compliant ...



[Temporary Power For Construction Sites: Complete Guide](#)

Temporary power for construction sites is necessary when looking to complete a project effectively. Here is a complete guide to help you navigate the process.



Temporary Power Planning In Construction

Temporary power planning is something that must be done on every project--whether you're connecting to an existing transformer, ...



The Ultimate Guide to Temporary Power

...

Portability: Designed for easy transport and setup, temporary power distribution boxes can be quickly moved to different locations as ...

Temporary Power Safety Solutions

One of the more common violations cited by OSHA is the improper use of conventional outlet boxes for temporary power applications. It is NOT ...



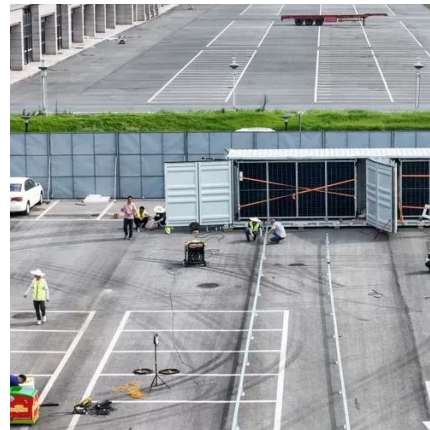
Expert Guide: Select the Right Temporary Power Distribution Box

Temporary power distribution boxes work as portable electrical hubs that distribute power from a main source to multiple devices and equipment. These versatile units, also known as " spider ...



Temporary Power Safety

The Occupational Health and Safety Administration (OSHA) states that contact with electricity is one of the leading causes of construction workplace fatalities. However, temporary power is ...





Contact Us

For inquiries, pricing, or partnerships:

<https://www.sccd-sk.eu>

Phone: +32 2 808 71 94

Email: info@sccd-sk.eu

Scan QR code for WhatsApp.

