



Can the inverter use a 24v battery





Overview

It is not feasible to connect a 12V inverter directly to a 24V battery. 12V inverters are designed to accept an input voltage of 12V, while 24V is clearly beyond their operating range. 12V inverters cannot withstand a 24V input, which can lead to damage to the inverter, or even.

It is not feasible to connect a 12V inverter directly to a 24V battery. 12V inverters are designed to accept an input voltage of 12V, while 24V is clearly beyond their operating range. 12V inverters cannot withstand a 24V input, which can lead to damage to the inverter, or even.

Using a 24V inverter with a 12V battery is not recommended. This voltage mismatch can create power limitations and pose safety hazards. For an effective solar energy system, confirm that all components, such as inverters and batteries, are compatible. This ensures optimal performance and longevity.

No, you cannot safely use a 24V inverter with a 12V battery without causing damage or failure. The voltage mismatch between the inverter and battery can result in poor performance, overheating, or even complete inverter burnout. This isn't just a technical incompatibility—it's a serious risk to.

The runtime of your inverter depends on a few important factors — battery capacity, inverter efficiency, and the power consumption of the device you are running. In this article, we'll break down the calculation in detail, provide examples, and give you tips to maximize your battery performance.

Success: The short answer: you can connect a 24 volt inverter to a 12 V system only by doubling the battery voltage (series wiring or a DC-DC step-up). Directly hooking one 12 V battery to a 24 volt inverter will not work and may damage the gear. In this guide, we'll unpack why the mismatch hurts.

Many users may have a 24V battery and wish to purchase a 12V inverter to power their equipment. In such cases, a common question is: Can I run a 12V inverter on a 24V battery?

It is not feasible to connect a 12V inverter directly to a 24V battery. 12V inverters are designed to accept an input.



Choosing the best inverter for a 24V battery setup is crucial for powering sensitive electronics, appliances, and solar systems efficiently. This article reviews top-rated inverters designed for 24V DC input, converting to reliable AC output suitable for homes, RVs, boats, and off-grid solar.



Can the inverter use a 24v battery



Can I Use 24V Inverter with 12V Battery

No, you cannot safely use a 24V inverter with a 12V battery without causing damage or failure. The voltage mismatch between the inverter and battery can result in poor ...

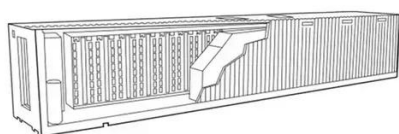
Can I Run a 12V Inverter on a 24V Battery? Solutions and Best ...

Connecting a 12V inverter to a 24V battery can cause damage to the inverter. The inverter is designed to operate at a specific voltage and a mismatch can lead to overheating, ...



Can You Use a 24 volt inverters With a 12V Battery System?

Pairing a 24 volt inverter directly with a lone 12 V battery is a no-go--it starves the inverter and can wreck both battery and electronics. The safe routes are simple: wire two 12 V ...



Can I Run a 12V Inverter on a 24V Battery?

To summarize, it is not feasible to run a 12V inverter directly on a 24V battery, which can lead to inverter damage and safety hazards. However,



this problem can be ...



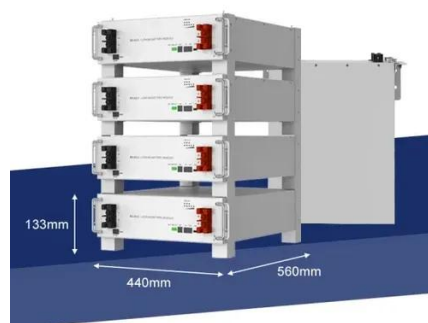
Can I Run a 12V Inverter on a 24V Battery?

To summarize, it is not feasible to run a 12V inverter directly on a 24V battery, which can lead to inverter damage and safety hazards. ...



Can I Use a 24V Inverter with a 12V Battery? Compatibility and

A 24V inverter needs a 24-volt power source to operate efficiently and safely. Connecting it to a 12V battery will result in inadequate voltage, which can prevent the inverter ...



12V vs 24V Inverter: What's The Difference & Which is Better

When choosing between a 12 voltage inverter and a 24 volt inverter, understanding their differences is essential for optimal performance. These devices, which emerged in the mid ...





[Can I Attach My Small Inverter Directly to the Battery?](#)

Yes, you can attach a small inverter directly to a battery, but doing it safely requires understanding voltage compatibility, wire sizing, and overload risks. Many DIYers assume it's ...



[12V vs 24V Inverter: What's The Difference](#)

When choosing between a 12 voltage inverter and a 24 volt inverter, understanding their differences is essential for optimal performance. ...

Best Inverters for 24V Battery Systems for RVs, Solar, and Off ...

This article reviews top-rated inverters designed for 24V DC input, converting to reliable AC output suitable for homes, RVs, boats, and off-grid solar configurations.



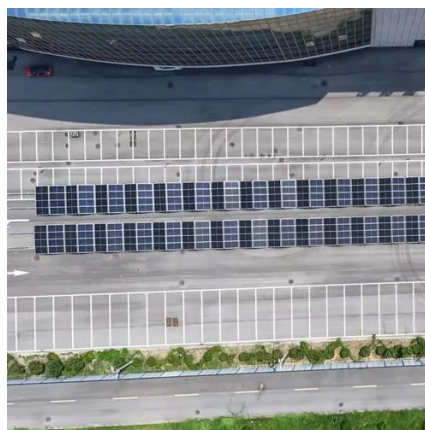
[Can I Use a 24V Battery Bank with a 12V Inverter?](#)

No, you cannot directly use a 24V battery bank with a 12V inverter. The voltage difference between the 24V battery and the 12V inverter creates compatibility issues that can ...



Best Inverters for 24V Battery Systems for RVs, Solar, and Off-Grid Use

This article reviews top-rated inverters designed for 24V DC input, converting to reliable AC output suitable for homes, RVs, boats, and off-grid solar configurations.



How Long Will A 24V Battery Last With an Inverter - Let's ...

Keep batteries in good condition - maintain proper temperature and connections. A 24V 100Ah battery with a 90% efficient inverter can power a 100W device for around 21.6 ...



Contact Us

For inquiries, pricing, or partnerships:

<https://www.sccd-sk.eu>

Phone: +32 2 808 71 94

Email: info@sccd-sk.eu

Scan QR code for WhatsApp.

