



Canberra Power Storage Project





Overview

The large-scale battery energy storage system (BESS) will provide at least 250 megawatts (MW) of power. This is enough energy to power one-third of Canberra for two hours during peak demand periods. This stored energy will be used to support our electricity grid.

The large-scale battery energy storage system (BESS) will provide at least 250 megawatts (MW) of power. This is enough energy to power one-third of Canberra for two hours during peak demand periods. This stored energy will be used to support our electricity grid.

The large-scale battery energy storage system (BESS) will provide at least 250 megawatts (MW) of power. This is enough energy to power one-third of Canberra for two hours during peak demand periods. This stored energy will be used to support our electricity grid. The Big Canberra battery.

The Australian Capital Territory (ACT) government and Eku Energy have commenced construction of the Williamsdale Battery Energy Storage System (BESS), a 250 MW/500 MWh project under the ACT Government's Big Canberra Battery initiative. Scheduled to begin operations in 2026, the BESS will store.

The ACT Government has taken delivery of its Big Canberra Battery transformer, which is set to ensure stored electricity is converted to the correct voltage to be safely supplied to the grid. The Government says the battery will deliver at least 250 megawatts of power, enough stored renewable.

Australia's capital is stepping into the renewable energy spotlight with its ambitious Canberra energy storage reservoir project. Designed to tackle the intermittency of wind and solar power, this pumped hydro initiative could store enough electricity to power 200,000 homes for 8 hours—equivalent.

The Williamsdale battery will deliver 250MW of storage. The ACT Government has reached a major milestone in its work to future-proof Canberra's energy supply. The development application has been approved to deliver Stream 1 of the project - a grid-scale battery in Williamsdale. This ACT Government.

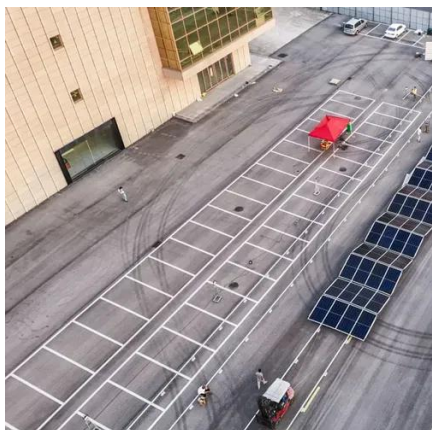
A big battery will plug into the solar corridor to the south of Canberra, with the



profits to go to the taxpayer in a revenue-sharing first. Located next to existing powerlines and solar farms, construction has begun on Eku Energy's \$400 million project that will bring 200 jobs for local tradies.



Canberra Power Storage Project



Macquarie's Eku gets green light for 500 MWh Canberra big battery

The government said the big battery project will be capable of responding rapidly to network constraints and will be able to store enough renewable energy to power one-third of ...

Capital project: plugging in profits from a big battery

The 250 megawatt/500 MW hour Williamsdale battery energy storage system located 35km south of Canberra will store enough renewable energy to power one-third of the capital for two hours ...



Canberra Energy Storage Reservoir Progress: Powering ...

Designed to tackle the intermittency of wind and solar power, this pumped hydro initiative could store enough electricity to power 200,000 homes for 8 hours--equivalent to keeping Sydney ...



**2MW / 5MWh
Customizable**

Milestone for Big Canberra Battery

The ACT Government has reached a major milestone in its work to future-proof Canberra's energy supply. The development application has been approved to deliver Stream ...



Canberra begins construction of battery energy storage system

The large-scale 250 megawatts (MW) battery will store enough renewable energy to power one-third of the city of Canberra for two hours during peak demand, helping to ...



[Canberra begins construction of battery energy ...](#)

The large-scale 250 megawatts (MW) battery will store enough renewable energy to power one-third of the city of Canberra for ...



[Macquarie's Eku gets green light for 500 MWh ...](#)

The government said the big battery project will be capable of responding rapidly to network constraints and will be able to store enough ...





Big Canberra Battery - Williamsdale BESS

The large-scale battery storage system will deliver 250 megawatts (MW) of power, store renewable energy and support grid reliability. Enough energy to power one-third of ...



Big clean energy delivery for Canberra

In partnership with Eku Energy, construction is underway on concrete bases for the batteries and the main switching building at Williamsdale. The large-scale battery energy ...

Advancing Canberra's Energy Landscape with Community ...

Over the next year, three new community-scale battery energy storage systems (BESS) will be deployed across Canberra to optimize solar energy usage, stabilize grid ...



Advancing Canberra's Energy Landscape with ...

Over the next year, three new community-scale battery energy storage systems (BESS) will be deployed across Canberra to optimize ...



Milestone for Big Canberra Battery

The ACT Government has reached a major milestone in its work to future-proof Canberra's energy supply. The development ...



Capital project: plugging in profits from a big battery

The 250 megawatt/500 MW hour Williamsdale battery energy storage system located 35km south of Canberra will store enough renewable energy to ...



Construction begins on ACT's 250 MW Williamsdale BESS

Scheduled to begin operations in 2026, the BESS will store enough renewable energy to power one-third of Canberra for two hours during peak demand, playing a pivotal ...



Big clean energy delivery for Canberra

In partnership with Eku Energy, construction is underway on concrete bases for the batteries and the main switching building at ...





[Ekü Energy Finalizes Funding for 250-MW Battery Project](#)

Ekü Energy secures funding for a groundbreaking 250-MW battery project in Canberra, set to revolutionize renewable energy storage and power grid stability by 2026.





Contact Us

For inquiries, pricing, or partnerships:

<https://www.sccd-sk.eu>

Phone: +32 2 808 71 94

Email: info@sccd-sk.eu

Scan QR code for WhatsApp.

