



Circuit breaker in substation in Ghana





Overview

Engineers from the Accra and Ashanti Sub-Transmission teams of the Electricity Company of Ghana (ECG) have resolved a complex fault. This involved a jammed 33 kV Schneider GIS circuit breaker at the Ridge Bulk Supply Point in Kumasi. The issue began on Monday, June 16, 2025.

Engineers from the Accra and Ashanti Sub-Transmission teams of the Electricity Company of Ghana (ECG) have resolved a complex fault. This involved a jammed 33 kV Schneider GIS circuit breaker at the Ridge Bulk Supply Point in Kumasi. The issue began on Monday, June 16, 2025.

Engineers from the Accra and Ashanti Sub-Transmission teams of the Electricity Company of Ghana (ECG) have resolved a complex fault. This involved a jammed 33 kV Schneider GIS circuit breaker at the Ridge Bulk Supply Point in Kumasi. The issue began on Monday, June 16, 2025. Part of the 13F2 GRIDCo.

In collaboration with AngloGold Ashanti Limited, a dedicated team from GRIDCo's Kumasi Operational Area successfully completed the replacement of an obsolete Oil Circuit Breaker (OCB) on the Obuasi - New Obuasi (B3NB) 161kV line. The primary goal of this project was to enhance power delivery and.

I. INTRODUCTION Ghana is undergoing major electrical upgrades affecting all aspects of the power system, from generation to transmission and distribution. The Kintampo substation will transmit and distribute 400 MW of power generated at the Bui power plant to hundreds of communities throughout.

One of the benefits of implementing IEC 61850 is minimizing or even eliminating the copper field wiring used to exchange protection and control data between intelligent electronic devices (IEDs) across a substation. Conversely, implementing IEC 61850 has introduced commissioning, testing, and.

Our partnership with ABB, a company renowned worldwide for its state-of-the-art electrical distribution devices, means that your buildings can rely on first-rate systems designed to protect against overloads, short circuits and arc faults. ABB's innovative devices are easy to install and help.

Design, manufacture, testing, erection and commissioning of 161 kV



electromechanical equipment including but not limited to circuit breakers, disconnect switches, protection and control facilities to replace existing over aged and obsolete ones to upgrade the facilities at the Volta Switching.



Circuit breaker in substation in Ghana

[How Circuit Breaker Works in Substation?](#)

Learn about circuit breakers in substations, their types, operation, and role in power safety. Circuit breakers are essential components in electrical substations, serving as ...



[Case Study : IEC 61850 Application for a](#)

One of the benefits of implementing IEC 61850 is minimizing or even ...



[Circuit Breaker Replacement Works - Obuasi Substation](#)

The primary goal of this project was to enhance power delivery and reliability in Obuasi and surrounding bulk supply points.



ECG Ashanti Substation receives support to resolve high-voltage breaker

Engineers from the Accra and Ashanti Sub-Transmission teams of the Electricity Company of



Ghana (ECG) have resolved a complex fault. This involved a jammed 33 kV ...

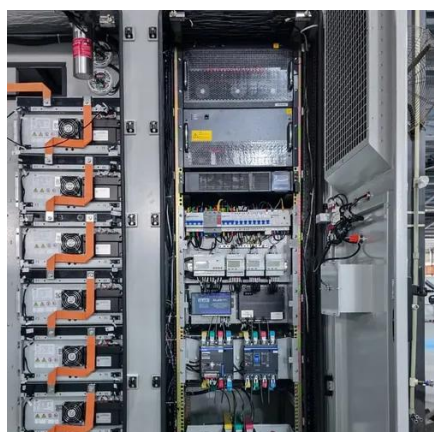


[ECG Ashanti Substation receives support to ...](#)

Engineers from the Accra and Ashanti Sub-Transmission teams of the Electricity Company of Ghana (ECG) have resolved a ...

ECG Ashanti Substation receives support to resolve high-voltage breaker

A collaboration between engineers from the Accra and Ashanti Sub-Transmission teams of the Electricity Company of Ghana (ECG) has successfully resolved a complex fault ...



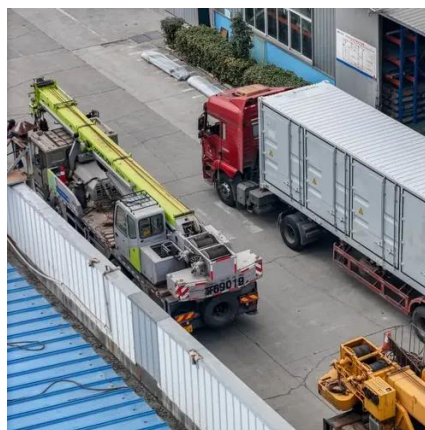
Microsoft Word

PROTECTION AND CONTROL The Kintampo substation is composed of two substation yards. One is a 161 kV transmission substation with four transmission lines, two step-down ...



Case Study : IEC 61850 Application for a Transmission Substation in Ghana

One of the benefits of implementing IEC 61850 is minimizing or even eliminating the copper field wiring used to exchange protection and control data between intelligent electronic devices ...



[Substation Components--Part 3: Circuit Breakers](#)

This article explores the crucial role of circuit breakers in substations, covering their fundamental functions, interruption processes, and the impact of transient recovery voltage ...

[Ghana -- P& A Consultancy Services AB](#)

Design manufacturing, testing, delivery and the replacement of electro-mechanical switchgear including circuit breakers, disconnect switches, instrument transformers, protection, ...



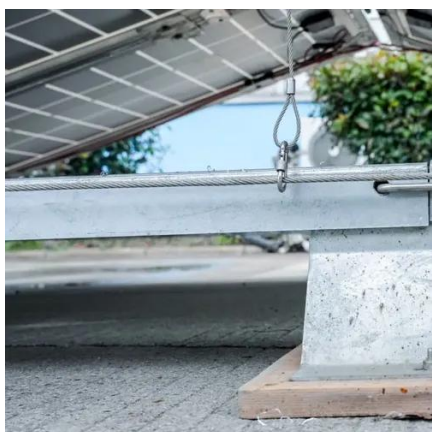
[Substation Components--Part 3: Circuit Breakers](#)

This article explores the crucial role of circuit breakers in substations, covering their fundamental functions, interruption processes, ...



[ECG Ashanti Substation receives support to ...](#)

A collaboration between engineers from the Accra and Ashanti Sub-Transmission teams of the Electricity Company of Ghana ...

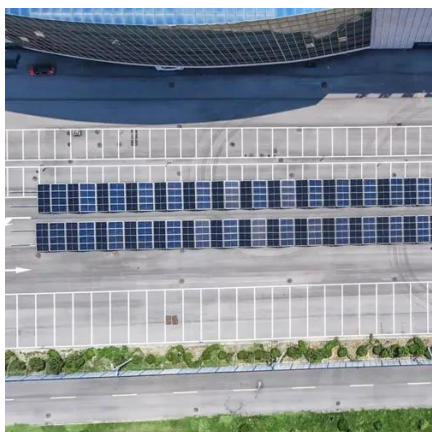
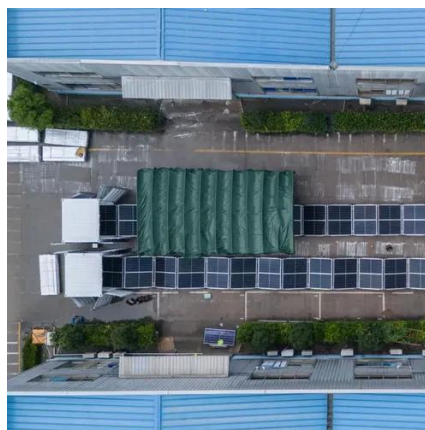


Z-Electricals

Our partnership with ABB, a company renowned worldwide for its state-of-the-art electrical distribution devices, means that your buildings can rely on first-rate systems designed to ...

[How Circuit Breaker Works in Substation?](#)

Learn about circuit breakers in substations, their types, operation, and role in power safety. Circuit breakers are essential ...



AFRICAN DEVELOPMENT FUND

The acquisition of land and easements along the right of way, access roads and substations will require a compensation program for structures, crops and fruit tree.



Contact Us

For inquiries, pricing, or partnerships:

<https://www.sccd-sk.eu>

Phone: +32 2 808 71 94

Email: info@sccd-sk.eu

Scan QR code for WhatsApp.

