



Common identification





Overview

In the United States, identity documents are typically the state -issued driver's license or identity card, while also the Social Security card (or just the Social Security number) and the United States passport card may serve as national identification.

In the United States, identity documents are typically the state -issued driver's license or identity card, while also the Social Security card (or just the Social Security number) and the United States passport card may serve as national identification.

Applicants are required to provide two forms of identity source documents in original form. The identity source documents must be bound to that applicant and shall be neither expired nor cancelled. If the two identity source documents bear different names, evidence of a formal name change must be.

In the United States, identity documents are typically the state -issued driver's license or identity card, while also the Social Security card (or just the Social Security number) and the United States passport card may serve as national identification. The United States passport itself also may.

A .gov website belongs to an official government organization in the United States. A locked padlock) or https:// means you've safely connected to the .gov website. Share sensitive information only on official, secure websites. Empowering Excellence in Government through Great People. We lead and.

For more than 50 years, this trusted tool has helped people confirm whether an ID is real by showing exactly what each document should look like. It includes full-color images, highlights of security features, and details like microprinting and UV markings. These are the things that can't be faked.

Understand the core concepts of personal identification, how documents verify identity, and their essential role in various aspects of daily life. Identification (ID) is essential for verifying an individual's identity in daily life. Understanding different types and their uses helps navigate.

Homeland Security Presidential Directive 12 (HSPD-12), Policy for a Common



Identification Standard for Federal Employees and Contractors directs the implementation of a standardized badging process, which is designed to enhance security, reduce identity fraud, and protect the personal privacy of.



Common identification

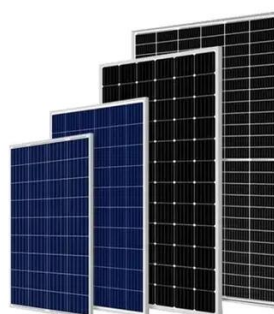


[How to Check Acceptable Forms of ID, Drivers License Guide](#)

For validating age, state-issued driver's licenses and ID cards are the most commonly accepted forms of identification. Passports and military IDs, while acceptable for age verification, tend to ...

Homeland Security Presidential Directive-12, Personal Identity

The National Institute of Standards and Technology (NIST) issued FIPS 201-3, which specifies the architecture and technical requirements for common identification ...



[Homeland Security Presidential Directive-12, ...](#)

The National Institute of Standards and Technology (NIST) issued FIPS 201-3, which specifies the architecture and technical ...

[What are the official identification documents in the USA?](#)

This could also be important for Latinos or other foreigners living in the United States, since they may need to obtain some official ID document that



allows them to demonstrate their legal stay ...



Department of Defense List of Acceptable Identity Documents

Unexpired DoD ID cards may be used for CAC reissuance, only if the Sponsor already has two non-DoD ID card forms of identification on file in the DEERS/RAPIDS that were valid at the ...



What Are the Different Types of Identification?

Identification documents fall into several categories, each serving distinct purposes. Government-issued photo IDs, such as state driver's licenses, state identification cards, and ...



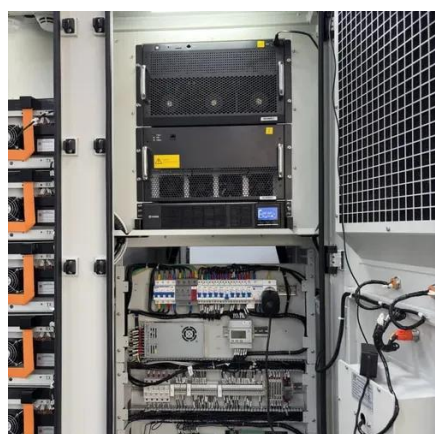
Policy

Homeland Security Presidential Directive 12 (HSPD-12) establishes policy for a common identification standard for Federal employees and contractors ...



Policy

Homeland Security Presidential Directive 12 (HSPD-12) establishes policy for a common identification standard for Federal employees and contractors and subsequently directed the ...



[Identity documents in the United States](#)

The most common national photo identity documents are the passport and passport card, which are issued by the U.S. Department of State to U.S. ...

Directives

Subject: Policy for a Common Identification Standard for Federal Employees and Contractors. Wide variations in the quality and security of forms of identification used to gain access to ...



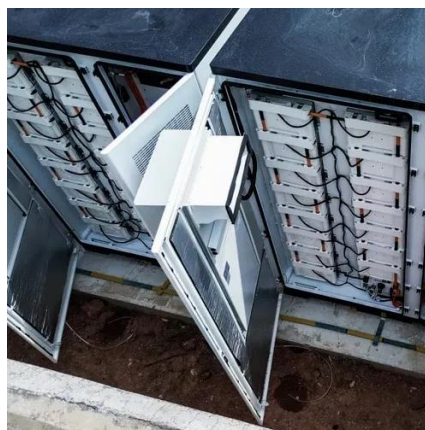
[HSPD-12 Credentialing , U.S. Department of Commerce](#)

All personnel must be "identity-protected" through authentication of two forms of government-issued identification. No one person can be the sole official that requests, authorizes, and issues a ...



[Homeland Security Presidential Directive 12: Policy ...](#)

There are wide variations in the quality and security of identification used to gain access to secure facilities where there is ...



[Identity documents in the United States](#)

The most common national photo identity documents are the passport and passport card, which are issued by the U.S. Department of State to U.S. nationals only upon voluntary application.

[How to Check Acceptable Forms of ID, Drivers License Guide](#)

Identification documents fall into several categories, each serving distinct purposes. Government-issued photo IDs, such as state driver's licenses, state identification cards, and ...



Homeland Security Presidential Directive 12: Policy for a Common

There are wide variations in the quality and security of identification used to gain access to secure facilities where there is potential for terrorist attacks.



Contact Us

For inquiries, pricing, or partnerships:

<https://www.sccd-sk.eu>

Phone: +32 2 808 71 94

Email: info@sccd-sk.eu

Scan QR code for WhatsApp.

