



# Communication method erecting a base station on the roof





## Overview

---

Rooftop Tower, also known as rooftop telecom angular tower or rooftop base station, serves as a steel supporting structure designed for communication systems. These towers mount directly on buildings to reduce height requirements and overall costs.

Rooftop Tower, also known as rooftop telecom angular tower or rooftop base station, serves as a steel supporting structure designed for communication systems. These towers mount directly on buildings to reduce height requirements and overall costs.

Developers such as End Users to deploy wireless facilities on top of or attached to alternative structures such as buildings, overturning entirely from the weight of its structural members, appurtenances, and mounting pipes, and is supplemented by adding weight to the attached mounting trays with ballast.

Communication tower erection services build communication towers, set up satellite dishes, and install related communications equipment. They also provide design engineering, structural analysis, and line testing services. Additional capabilities may include: Structural analysis involves the.

Murphy Tower Service specializes in challenging rooftop installations of wireless communications infrastructure including base station shelters and custom support structures. Request a Quote Have a question?

Fill out the form below and we'll get back to you. Specializing in rooftop installations of.

Communication tower erection services build communication towers, set up satellite dishes, and install related telecom equipment. They also provide design engineering, structural analysis, and line testing services. Our analysis involves the selection of tower styles and materials of construction.

Rooftop cell sites, also known as rooftop telecommunication towers, are critical for delivering high-speed mobile and internet services in space-constrained urban environments. Whether you're a telecom operator seeking efficient network solutions or a property owner exploring passive income through.



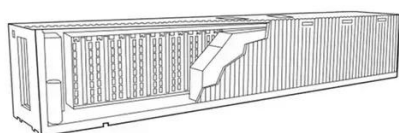
Different reviews are based on tower analysis alone and focus on the response of the host structure on which the tower rests. Valuable insights and conclusions are provided by this literature review to identify the problems associated with the placement of telecommunication towers over buildings.



## Communication method erecting a base station on the roof

---

### [Communication Tower Erection Services Selection Guide](#)



Communication tower erection services also build roof top towers, self-supporting towers, and telescoping or crank-up towers. Some communication tower erection services perform ...

### **Tower Erection**

They are suitable for emergency communications, two-way radio, remote base stations, and cell-on-wheels (COW) applications. Communication ...



### **Rooftop Tower Manufacturer**

Rooftop Tower, also known as rooftop telecom angular tower or rooftop base station, serves as a steel supporting structure designed for communication systems. These towers mount directly ...

### [Communication Tower Erection Services Selection Guide](#)

Rooftop Telecom Tower Site Telecom Rooftop Base Station In Telecommunication Rooftop Cell Phone Antenna Radar Installation On Tower



PresentationTelecom RooftopRadio Tower On  
RoofSatellite On RoofRoof Antenna  
InstallationTelecommunication Base Stations  
Network Repeaters on the Roof of the  
Telecommunication base stations network  
repeaters on the roof of the Cellular network base  
station antenna on the telecommunication mast  
for Telecommunication base stations network  
repeaters on the roof of the Telecommunication  
base stations network repeaters on the roof of  
Telecommunication base stations network  
repeaters on the roof of Telecommunication Base  
Stations Network Repeaters on the Roof of the  
Telecommunication Base Stations Network  
Repeaters on the Roof of Telecommunication base  
stations network repeaters on the roof of  
Telecommunication base stations network  
repeaters on the roof of Telecommunication Base  
Stations Network Repeaters on the Roof of See  
allMurphy Tower Service



## Rooftop Base Stations & Structure , Murphy Tower

Murphy Tower Service specializes in challenging rooftop installations of wireless communications infrastructure including base station shelters ...



### [Rooftop Base Stations & Structure , Murphy Tower](#)

Murphy Tower Service specializes in challenging rooftop installations of wireless communications infrastructure including base station shelters and custom support structures.

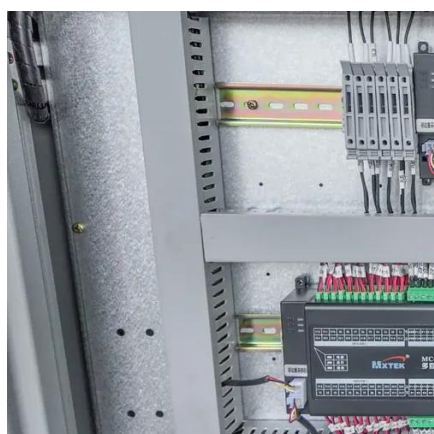
### [Building-Mounted Structures in the Telecommunications ...](#)

While the International Building Code, ASCE/SEI 7, and ANSI/TIA-222 do not require positive attachment of roof-mounted equipment to the underlying structure, it may be ...



## Tower Erection

They are suitable for emergency communications, two-way radio, remote base stations, and cell-on-wheels (COW) applications. Communication tower erection services also build roof top ...



## [A Review on Buildings having Telecommunication ...](#)

We study these towers using two methods: the Static method and the Gust Factor Method (GFM). We compare towers made with angle sections to ...



## **A Review on Buildings having Telecommunication Tower at Roof**

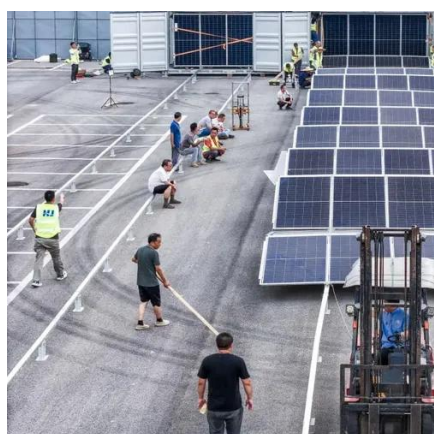
We study these towers using two methods: the Static method and the Gust Factor Method (GFM). We compare towers made with angle sections to those made with square hollow sections, ...





## Understanding Rooftop Telecom Towers: Types and Applications

Rooftop cell sites, also known as rooftop telecommunication towers, are critical for delivering high-speed mobile and internet services in space-constrained urban environments.



Designing a rooftop tower for communication purposes involves unique challenges and considerations due to its placement on an existing structure. Here are the key aspects to ...

Designing a rooftop tower for communication purposes involves unique challenges and considerations due to its placement on an existing ...



### **Communication Towers**

In order to erect or maintain communication towers, employees regularly climb towers, using fixed ladders, support structures or step bolts, from 100 feet to heights in excess of 1000 or 2000 feet.



## Building a communication base station on the roof

For the installation of a radio base station, the operators are reminded to consider the possible effect of radio-frequency radiation on flammable atmospheres due to the diesel fuel oil tank, if ...





## Contact Us

---

For inquiries, pricing, or partnerships:

<https://www.sccd-sk.eu>

Phone: +32 2 808 71 94

Email: [info@sccd-sk.eu](mailto:info@sccd-sk.eu)

Scan QR code for WhatsApp.

