



Communication room base station





Overview

A base station, also known as a cell site or cell tower, is used for wireless communication. It is a fixed location equipped with antennas and other equipment that receives and transmits radio signals to and from mobile devices, such as smartphones, tablets, and other wireless devices.

A base station, also known as a cell site or cell tower, is used for wireless communication. It is a fixed location equipped with antennas and other equipment that receives and transmits radio signals to and from mobile devices, such as smartphones, tablets, and other wireless devices.

In the world of radio communications, a radio base station plays a vital role in ensuring reliable and seamless communication across a wide area. Whether used in mobile networks, professional communication systems, or emergency response scenarios, base stations are essential for facilitating voice.

An auxiliary radio communication system (ARCS) is a wireless two-way building communication system. It is for New York City Fire Department (FDNY) use only. It helps firefighters talk inside a building. An ARCS includes a base station (transceiver) connected to antennas throughout the building and.

Base station antennas are installed in such a way that radio-wave exposure in public areas is well below the established safety limits. Mobile phones and other mobile devices require a network of base stations in order to function. The base station antennas transmit and receive RF (radio frequency).

A base station represents an access point for a wireless device to communicate within its coverage area. It usually connects the device to other networks or devices through a dedicated high bandwidth wire of fiber optic connection. Base stations typically have a transceiver, capable of sending and.

A base station plays a pivotal role in the realm of telecommunications, acting as the cornerstone of connectivity. It enables seamless communication by linking various wireless devices to broader networks, ensuring that data flows efficiently from one point to another. A base station is an integral.

A base station cabinet is like a strong box for important telecom equipment. It



keeps devices safe from bad weather, dirt, and damage. Think of it as a secure home that helps a telecom base station work well. These cabinets are very important for modern networks, like standalone and non-standalone.



Communication room base station



2-Way Radio Base Stations -- Silke Communications

The company manufactures communications equipment of unsurpassed reliability and value for use by public safety professionals and government agencies, as well as radios for use in a ...

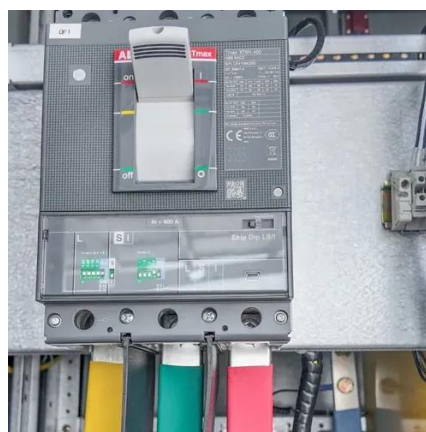


What is a Base Station Cabinet

A base station cabinet protects telecom equipment, ensures stable power, cooling, and security, and supports 4G, 5G, IoT, and emergency networks.

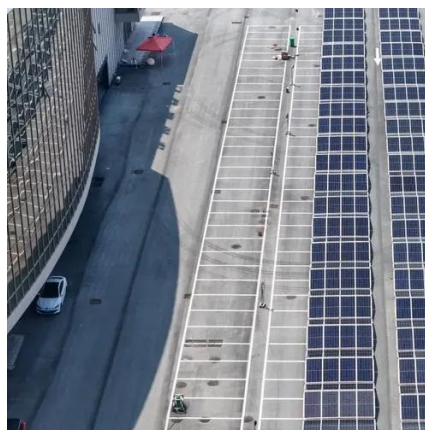
Base stations and networks

Sustainable materials · Adjustable sit/stand desk



Base Stations

Base stations form a key part of modern wireless communication networks because they offer some crucial advantages, such as wide coverage, continuous communications and ...



Choosing the Right Base Station for Critical Communications

In the world of critical communications, selecting the right base station is vital to ensure reliable and consistent coverage, regardless of the deployment environment. From ...



Radio Base Stations for Secure Communication

Discover Belfone's advanced radio base stations designed for reliable, scalable, and secure communication. Perfect for public safety, industrial, and enterprise use, Belfone's solutions ...



Auxiliary Radio Communication System Application

An ARCS includes a base station (transceiver) connected to antennas throughout the building and a radio console in the building lobby. Firefighters' portable radios have limited range inside ...



Complete Guide to 5G Base Station Construction , Key Steps, ...

Explore how 5G base stations are built--from site planning and cabinet installation to power systems and cooling solutions. Learn the essential components, technologies, and ...



Types and Applications of Mobile Communication Base Stations

Mobile communication base station is a form of radio station, which refers to a radio transceiver station that transmits information between mobile phone terminals through a ...

What Is A Base Station?

Base stations play a central role in two-way radio systems, such as citizens band (CB) radio and ham radio. In these setups, the base station serves as a fixed point of ...



Base stations and networks

Base station antennas are installed in such a way that radio-wave exposure in public areas is well below the established safety limits. Mobile phones and other mobile devices require a network ...



Contact Us

For inquiries, pricing, or partnerships:

<https://www.sccd-sk.eu>

Phone: +32 2 808 71 94

Email: info@sccd-sk.eu

Scan QR code for WhatsApp.

