



Compact power station factory in New-Zealand





Overview

This is a list of power stations in New Zealand. The list is not exhaustive - only power stations over 0.5 MW and significant power stations below 0.5 MW are listed. Power plants in New Zealand have different generating roles - for baseload, intermediate or peaking. generators are those that run continuously (.

The iconic, orange-tipped power station has been producing energy for New Zealand for more than 40 years. Huntly is critical to the country's energy security and will play an interesting role in the future as we move to a low carbon future.

The iconic, orange-tipped power station has been producing energy for New Zealand for more than 40 years. Huntly is critical to the country's energy security and will play an interesting role in the future as we move to a low carbon future.

More complete list, in Google Earth form (1.2 MB, arrives as index.php, rename to index.kml) [1] KML file (edit • help) This is a list of power stations in New Zealand. The list is not exhaustive - only power stations over 0.5 MW and significant power stations below 0.5 MW are listed. Power plants.

Contact's geothermal steam turbine power station at Tauhara, in Taupō, is one of New Zealand's most significant infrastructure investments of recent times. It can produce up to 174 megawatts (MW) of electricity, which is around 3.5 percent of the country's electricity and enough for around 200,000.

The Power Station boasts the world's largest single-shaft geothermal steam turbine generator with a capacity of 184 MW. Tauhara Geothermal Power Station The New Zealand government has set a goal of achieving 100% renewable energy utilization by 2030. With the world's fifth-largest geothermal power.

The list of power stations in New Zealand catalogues the facilities that generate the country's electricity, primarily from renewable sources such as hydroelectric, geothermal, wind, and solar power, which accounted for 85.5% of the 43,879 GWh total generation in 2024. [1] These stations form the.

This article explores the key types of power stations in New Zealand, highlighting their importance, operation, and contribution to the nation's energy landscape. Hydroelectric power is the backbone of New Zealand's electricity generation. The country leverages its abundant water resources to.



By capacity, Huntly is Aotearoa's largest power station (1200MW). It is located close to major population centres, has reliable access to cooling water, coal and gas resources, and benefits from limited transmission constraints. The iconic, orange-tipped power station has been producing energy for.



Compact power station factory in New-Zealand



Electricity industry

In New Zealand electricity is generated by 4 major electricity generating companies. Genesis Energy, Mercury and Meridian Energy operate under ...

Huntly Power Station , Genesis NZ

The iconic, orange-tipped power station has been producing energy for New Zealand for more than 40 years. Huntly is ...

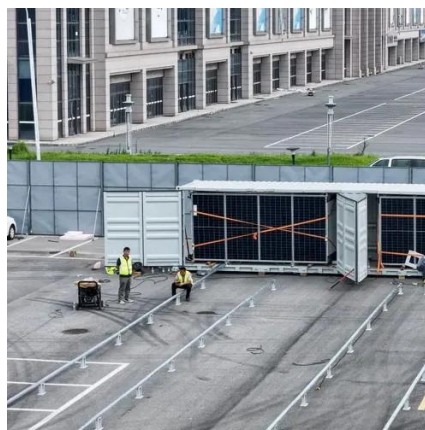


[New Zealand's Tauhara Geothermal Power Station ...](#)

Construction of the Power Station, which Sumitomo Corporation began in February 202f1, was completed 41 days earlier than ...

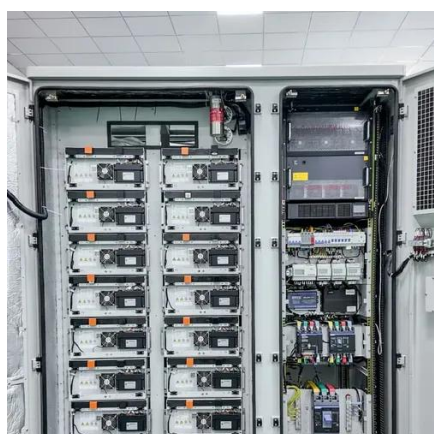
[Huntly Power Station Begins 100 MW Grid-Scale Battery](#)

Huntly Power Station is building a 100 MW grid-scale battery to enhance New Zealand's energy security and support renewable integration.



[Power Stations in New Zealand A Comprehensive Overview](#)

This article explores the key types of power stations in New Zealand, highlighting their importance, operation, and contribution to the nation's energy landscape.



[List of power stations in New Zealand](#)

Gas-fired power stations in New Zealand primarily serve as flexible peaking and intermediate load facilities, complementing the dominance of renewable sources like hydro and geothermal by ...



[Huntly Power Station Begins 100 MW Grid-Scale ...](#)

Huntly Power Station is building a 100 MW grid-scale battery to enhance New Zealand's energy security and support renewable integration.



Huntly Power Station , Genesis NZ

The iconic, orange-tipped power station has been producing energy for New Zealand for more than 40 years. Huntly is critical to the country's energy security and will play an interesting role ...



[List of power stations in New Zealand](#)

The list is not exhaustive - only power stations over 0.5 MW and significant power stations below 0.5 MW are listed. Power plants in New Zealand have different generating roles - for ...

[New Zealand's Tauhara Geothermal Power Station](#)

Construction of the Power Station, which Sumitomo Corporation began in February 2021, was completed 41 days earlier than the contract deadline, despite the impact ...



Tauhara , Contact Energy

Contact's geothermal steam turbine power station at Tauhara, in Taupo, is one of New Zealand's most significant infrastructure investments of recent times.



List of power stations in New Zealand

This is a list of power stations in New Zealand. The list is not exhaustive - only power stations over 0.5 MW and significant power stations below 0.5 MW are listed.



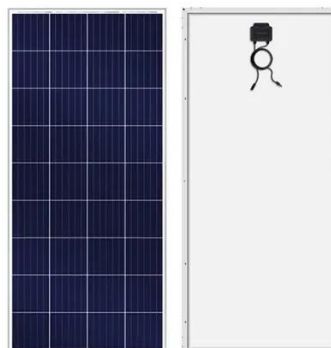
Genesis Energy Starts Construction of 100MW/200MWh Battery ...

The announcement was made on June 5, 2025, and the project will be situated at the Huntly Power Station, located in the Waikato region, which is home to New Zealand's ...



Electricity industry

In New Zealand electricity is generated by 4 major electricity generating companies. Genesis Energy, Mercury and Meridian Energy operate under a mixed ownership model in which the ...



Genesis Energy Starts Construction of ...

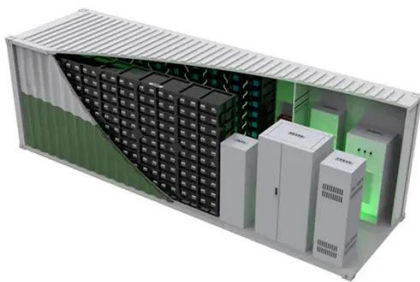
The announcement was made on June 5, 2025, and the project will be situated at the Huntly Power Station, located in the Waikato region, ...





List of power stations in New Zealand

This is a list of power stations in New Zealand. The list is not exhaustive - only power stations over 0.5 MW and significant power stations below 0.5 MW are listed. Power plants in New Zealand have different generating roles - for baseload, intermediate or peaking. Baseload generators are those that run continuously (...)



Tauhara , Contact Energy

Contact's geothermal steam turbine power station at Tauhara, in Taupo, is one of New Zealand's most significant infrastructure investments of recent ...



Contact Us

For inquiries, pricing, or partnerships:

<https://www.sccd-sk.eu>

Phone: +32 2 808 71 94

Email: info@sccd-sk.eu

Scan QR code for WhatsApp.

