



Composition of Malawi s wind power generation system





Overview

In 2001, as a result of droughts and famines, an unconventional electricity-producing made out of spare parts and scrap was built in the village of Wimbe near by 14-year-old inventor .

What are the different types of energy companies in Malawi?

The types of companies range from those marketing solar home systems and fuel saving stoves, to those operating at larger scales on the development of a wind energy, marketing and distributing clean cooking technologies, and more. A range of non-governmental organizations (NGOs) and private sector firms engage in Malawi's energy sector.

How does Malawi get its electricity?

The majority of Malawi's electricity supply comes from hydroelectric power plants. Renewable sources such as solar and geothermal, imported petroleum-based products, and biomass (e.g., predominately firewood and charcoal) also contribute to energy supply.

What is the power sector in Malawi?

Revised in July 2023, this map provides a detailed view of the power sector in Malawi. The locations of power generation facilities that are operating, under construction or planned are shown by type - including liquid fuels, coal, geothermal, hybrid, hydroelectricity, solar PV, wind and biomass/biogas.

How does weather affect electricity generation in Malawi?

Droughts and dry spells limit water supply passing through the hydropower system, which in turn limits electricity generation; and flash floods and other periods of heavy, inconsistent rainfall lead to too much water passing through power plants. In both cases, extreme weather patterns affect Malawi's primary source of electricity generation.



Composition of Malawi s wind power generation system



ENERGY PROFILE Malawi

mix of fossil fuels. In countries and years where no fossil fuel generation occurs, an average fossil fuel emission factor has been used to calculate countries and areas. The IRENA statistics ...

Energy in Malawi

In 2001, as a result of droughts and famines, an unconventional electricity-producing wind turbine made out of spare parts and scrap was built in the village of Wimbe near Kasungu by 14-year ...



[Comprehensive onshore wind energy assessment ...](#)

An 80 m wind farm at Site A can potentially power up to 32,931 urban and 84,475 rural households. Economically, 80 m hub heights ...



[Malawi Wind electricity net generation, 1973-2017](#)

Wind power plant is a group of wind turbines interconnected to a common utility system through a system of transformers, distribution



lines, and (usually) one substation.



[Design and Analysis of Wind Turbines for Favourable ...](#)

Key to the development is sustainable energy supply. One of the sources is wind energy which is growing at a rapid rate worldwide. Research has been done in Malawi that has identified six ...

Global Wind Atlas

The Global Wind Atlas is a free, web-based application developed to help policymakers, planners, and investors identify high-wind areas for wind power generation virtually anywhere in the ...



[Comprehensive onshore wind energy assessment in Malawi ...](#)

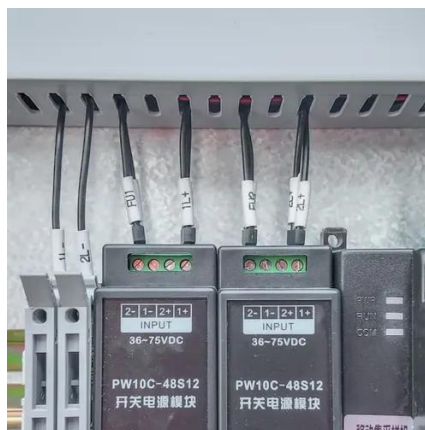
An 80 m wind farm at Site A can potentially power up to 32,931 urban and 84,475 rural households. Economically, 80 m hub heights showcased lower levelized cost of electricity





[Malawi power infrastructure map illustrates ...](#)

Power generation data was drawn from our African Energy Live Data platform, which contains project level detail on power plants ...



Malawi power infrastructure map illustrates renewable energy ...

Power generation data was drawn from our African Energy Live Data platform, which contains project level detail on power plants and projects across Africa. The map is ...



[Comprehensive onshore wind energy assessment in Malawi ...](#)

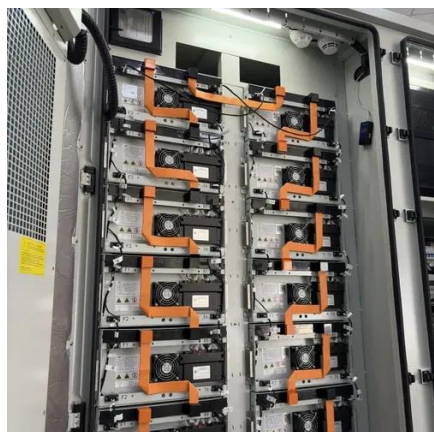
The wind suitability map, using six factors, uncovered significant potential for wind energy generation in Malawi. Some sites are suitable for hybrid systems with solar and other ...



**2MW / 5MWh
Customizable**

Assessing wind energy potential in Malawi for power generation

The objective of this study was to assess wind energy potential in Malawi, results of which would lead to harnessing wind energy in the country. Daily mean wind speed values for 16 sites from ...





STATE OF KNOWLEDGE

Malawi's National Energy Policy has a goal of achieving 80% electricity access by 2030, shifting from a centralized grid model towards mini-grids, private sector investment, and ...



Energy in Malawi

[Overview](#)[History](#)[Background](#)[Hydroelectricity](#)[Thermal power](#)[Solar energy](#)[External links](#)

In 2001, as a result of droughts and famines, an unconventional electricity-producing wind turbine made out of spare parts and scrap was built in the village of Wimbe near Kasungu by 14-year-old inventor William Kamkwamba.



Contact Us

For inquiries, pricing, or partnerships:

<https://www.sccd-sk.eu>

Phone: +32 2 808 71 94

Email: info@sccd-sk.eu

Scan QR code for WhatsApp.

