



Container generator set operation procedures





Overview

This manual has been designed as a technical guide to operating, servicing and maintaining the generating set. It should be used in conjunction with the Engine and Alternator Manuals.

This manual has been designed as a technical guide to operating, servicing and maintaining the generating set. It should be used in conjunction with the Engine and Alternator Manuals.

To prevent injury, the procedures provided for installation and removal of the generator set must be followed carefully. This generator set is equipped with special pins and mounting bolts and can be installed only on containers with matching installation points. a. Installation 1. Place forks.

at ng the gener r

On a regular basis, containerised generator sets (CGS) are placed on board ships to provide replacement power in case of a damage to one of the ship's generator sets, or additional power, e.g. to provide power to extra deck equipment or reefer containers. There are currently no clear rules and.

GENERATOR SET OPERATOR & MAINTENANCE INSTRUCTION MANUAL This manual has been designed as a guide to operators to aid in starting, stopping and otherwise operating the generator set. ORIGINAL INSTRUCTIONS 356-5901 (GB) V9 06/14 2 356-5901 (GB) V9 06/14 CONTENTS 1. INTRODUCTION 6 2. SAFETY 7 2.1.

This manual has been designed as a technical guide to operating, servicing and maintaining the generating set. It should be used in conjunction with the Engine and Alternator Manuals. An Operator’s Manual is also included with these manuals to aid the operator specifically in starting, stopping and.

Your generator set is subjected to several test and quality controls at every stage of production. There are several test and control procedures carried out on the time interval between the very first “assembling” step and the very last “delivery” step. TEKSAN products are also manufactured. How do I choose the operating site for a containerised generator?



The following information must be considered in the selection of the operating site for the container. The containerised generator set must be placed on a flat surface in order to maintain proper alignment. Containers can be successfully installed on a concrete plinth or level, natural surface.

What is a containerised generator set?

On a regular basis, containerised generator sets (CGS) are placed on board ships to provide replacement power in case of a damage to one of the ship's generator sets, or additional power, e.g. to provide power to extra deck equipment or reefer containers. There are currently no clear rules and requirements for such time limited installations.

What is a generator operating manual?

This operating manual, for engine service-maintenance and alternator service-maintenance books are delivered together with generator set. This operating and maintenance manual was prepared in order to ensure users to easily handle the generator and help them how they are going to make its maintenance. This is not a workshop repair manual.

What is the operator instruction manual for a generating set?

This Operator Instruction Manual has been designed to help you operate and maintain your electrical generating set correctly. We recommend that the operator should take the time to read this manual. This generating set is one of a family of heavy duty industrial generating sets designed to be ready to run when it arrives. Years of



Container generator set operation procedures

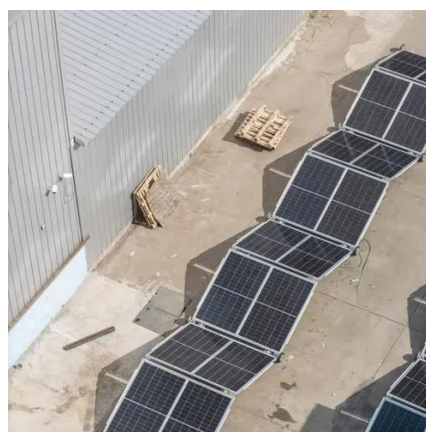


[DIESEL GENERATOR USER AND MAINTENANCE MANUAL](#)

Safe operating responsibility of the generator set belongs to people using and maintaining it. Provided that instructions, methods and safety rules in this manual are complied with, risk of ...

[Diesel Generator Set Operation Procedures](#)

This document provides standardized and professional operating procedures for the safe and efficient use of a diesel generator ...



[OPERATION AND MAINTENANCE MANUAL FOR DIESEL ...](#)

Your generator set is subjected to several test and quality controls at every stage of production. There are several test and control procedures carried out on the time interval between the very ...

Operation

Move generator set against container and fully engage clamps into mating holes in container castings. On both clamps, turn the actuating hand lever ...



Operation

Move generator set against container and fully engage clamps into mating holes in container castings. On both clamps, turn the actuating hand lever (C) into the vertical down position ...



Containerized Series Generator Set

No matter what your power demands and challenges are, our Containerized Series generator sets will meet your needs and expectations through a selection of pre-configured models and options.



[Genset Operation, Maintenance & Installation Manual](#)

This document is an instruction manual for operating, maintaining, and installing a generating set. It covers safety procedures, a general description of generating set components, installation ...



Diesel Generator Set Operation Procedures

This document provides standardized and professional operating procedures for the safe and efficient use of a diesel generator set. The procedures cover starting, operating, ...



GENERATOR SET OPERATOR & MAINTENANCE ...

If it is necessary to locate the generator set outside of the building, the generator set should be enclosed in a weatherproof canopy or container-type housing which is available for all sets.

Generator Set Operator & Maintenance Manual

Operator & maintenance manual for generator sets. Covers safety, installation, operation, control systems, and troubleshooting. Technical guide for professionals.



DNV-CG-0588 Containerised generator sets



The objective of this class guideline is to provide guidance and ensure uniform interpretation of the applicable requirements for time limited installation of generator sets in container on board.



GENERATING SET TECHNICAL OPERATION AND ...

The following procedures detail the steps required to prepare the set for operation, start and stop it for the first time after installation, and start and stop it normally.



Genset Operation, Maintenance & Installation Manual

This document is an instruction manual for operating, maintaining, and installing a generating set. It covers safety procedures, a general ...



Contact Us

For inquiries, pricing, or partnerships:

<https://www.sccd-sk.eu>

Phone: +32 2 808 71 94

Email: info@sccd-sk.eu

Scan QR code for WhatsApp.

