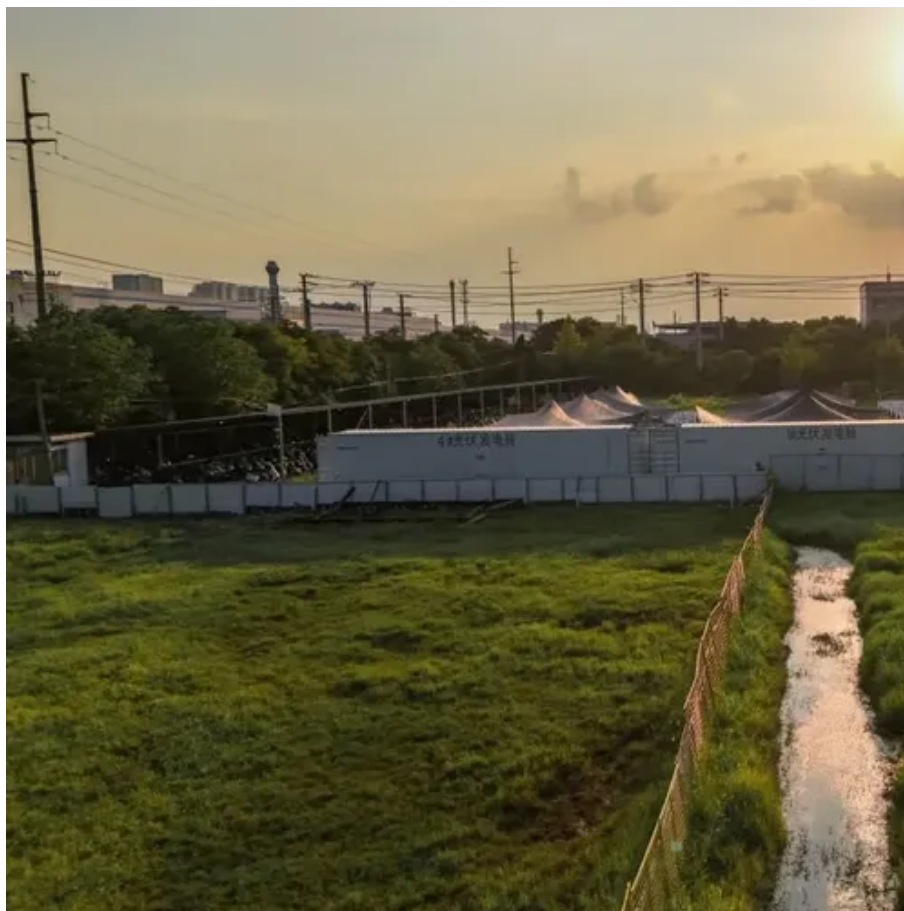




# Daily power consumption of mobile base station equipment





## Overview

---

This paper conducts a literature survey of relevant power consumption models for 5G cellular network base stations and provides a comparison of the models.

This paper conducts a literature survey of relevant power consumption models for 5G cellular network base stations and provides a comparison of the models.

The increasing total energy consumption of information and communication technology (ICT) poses the challenge of developing sustainable solutions in the area of distributed computing. Current communication network technologies, such as wireless cellular networks, are required for applications and.

While the radio access network (RAN) equipment is generally considered the main contributor of the sector in terms of energy consumption, the 8.5 billion mobile devices actually add up to a bigger overall impact [2]. Second, with UE generally battery-powered, a certain minimum energy autonomy is.

However, there is still a need to understand the power consumption behavior of state-of-the-art base station architectures, such as multi-carrier active antenna units (AAUs), as well as the impact of different network parameters. In this paper, we present a power consumption model for 5G AAUs based.

Comparison of power consumption between 4G and 5G base stations The power consumption of 4G base stations is affected by multiple factors such as equipment type, load rate, and environmental conditions. The following is an analysis from the perspectives of core equipment power consumption.

This thesis presents a comprehensive analysis of power consumption models of base stations. The research delves into the distribution of power consumption across different types of base stations, highlighting the significant role of power amplifiers in macro stations and baseband processing units.

Abstract - This paper presents a comprehensive empirical study of energy consumption within an operational urban LTE Radio Access Network (RAN). Using both site-level measurements and aggregated multi-eNB data collected over a typical workweek, the study analyses traffic trends, PRB utilization.



## Daily power consumption of mobile base station equipment



### INVESTIGATORY ANALYSIS OF ENERGY REQUIREMENT OF A MULTI-TENANT MOBILE

This study examines the energy requirements of a multi-tenant BTS, focusing on power consumption patterns, key energy-intensive components, and optimization strategies.

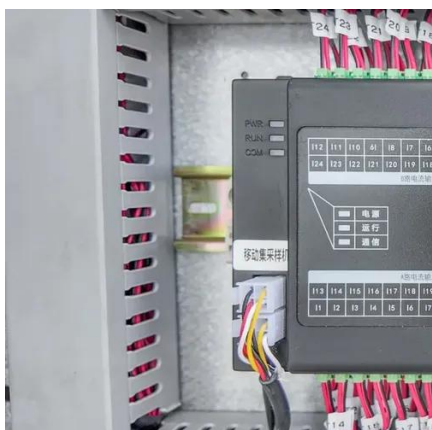
### Power consumption models of base station : measurements and ...

These insights highlight the need for ongoing research into better methods for accurately measuring and optimizing power consumption in base stations. This research is crucial for ...



### Power Consumption Modeling of 5G Multi-Carrier Base ...

Importantly, this study item indicates that new 5G power consumption models are needed to accurately develop and optimize new energy saving solutions, while also considering the ...



### INVESTIGATORY ANALYSIS OF ENERGY ...

This study examines the energy requirements of a multi-tenant BTS, focusing on power consumption patterns, key energy ...



### [Comparison of Power Consumption Models for 5G Cellular ...](#)

Power consumption models for base stations are briefly discussed as part of the development of a model for life cycle assessment. An overview of relevant base station power ...



### **base station power consumption**

With the large-scale rollout of 5G networks and the rapid deployment of edge-computing base stations, the core requirements for base station power systems--stability, cost-efficiency, and ...



**2MW / 5MWh  
Customizable**

### [Measurements and Modelling of Base Station Power ...](#)

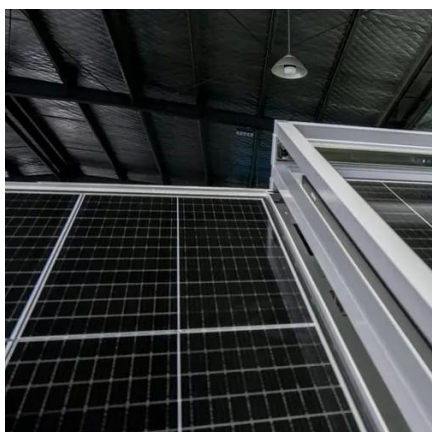
Base stations represent the main contributor to the energy consumption of a mobile cellular network. Since traffic load in mobile networks significantly varies during a working or weekend ...





## Solutions for the Power consumption of telecommunication base station

The following is an analysis from the perspectives of core equipment power consumption, auxiliary system energy consumption, actual power consumption in different ...



## Measurements and Modelling of Base Station Power Consumption under Real

Base stations represent the main contributor to the energy consumption of a mobile cellular network. Since traffic load in mobile networks significantly varies during a working or weekend ...

## [Energy Consumption Assessment of Mobile Cellular Networks](#)

To quantify the energy consumed by a base station site it is important to know the various subsystems or equipment that make up the base station site and their contributions to the total ...



## Comparison of Power Consumption Models for 5G Cellular Network Base

Power consumption models for base stations are briefly discussed as part of the development of a model for life cycle assessment. An overview of relevant base station power ...



## Empirical Analysis of Power Consumption in LTE Base ...

The aim was to analyse real-world energy consumption behaviours across urban macro base stations (eNBs), including both temporal usage patterns and internal component-level power ...



## PhD school: Comprehensive Energy Consumption Analysis ...

This re-search will aim to identify the key factors contributing to energy usage at the base station level, which plays a critical role in the overall efficiency of mobile networks.

## **Solutions for the Power consumption of telecommunication base ...**

The following is an analysis from the perspectives of core equipment power consumption, auxiliary system energy consumption, actual power consumption in different ...





## Contact Us

---

For inquiries, pricing, or partnerships:

<https://www.sccd-sk.eu>

Phone: +32 2 808 71 94

Email: [info@sccd-sk.eu](mailto:info@sccd-sk.eu)

Scan QR code for WhatsApp.

