



Distance between batteries in the battery cabinet





Overview

The UL 9540A testing shows that the manufacturers installation and spacing recommendations included in these products' Quick Installation Guides (QIG) are adequate and allow a separation distance less than 3 ft.

The UL 9540A testing shows that the manufacturers installation and spacing recommendations included in these products' Quick Installation Guides (QIG) are adequate and allow a separation distance less than 3 ft.

sted to UL 9540. According to UL 9540 the separation between batteries should e 3ft (91.4 cm). UL 9540 also provides that equipment evaluated to UL 9540A with a written report from a nationally recognized testing laboratory (NRTL), such as ETL, can be permitted to be installed with less than 3ft.

Section 480.9 (E) requires any personnel doors intended for entrance to, and egress from a battery room, to open in the direction of egress and be equipped with listed panic hardware. Below is a preview of the NEC®. See the actual NEC® text at NFPA.ORG for the complete code section. Once there.

The International Fire Code (IFC) and International Residential Code (IRC) provide guidance on the mounting of stationary energy storage systems (ESS). These standards have been adopted by many jurisdictions in the United States. IFC has been adopted in approximately 75% of US states and the NFPA 1.

Industrial battery rooms require careful design to ensure safety, compliance, and operational efficiency. This article covers key design considerations and relevant standards. 1. Space Planning and Layout 900mm min Battery Room Layout 1200mm Primary Access End Access 1000mm Battery Racks Industrial.

Installing a battery energy storage system is a significant step toward energy independence. To ensure your system operates safely and efficiently, proper installation is paramount. This involves more than just connecting wires; it requires careful attention to ventilation and clearance. Adhering.

NOTE: The distance between the modular battery cabinet (s) and the UPS must not exceed 100 m. Contact Schneider Electric for installations with a longer distance. Contact Schneider Electric for installations with a longer distance. Determining the



proper distance between kitchen island and cabinets. How far apart should IQ batteries be stacked?

Enphase IQ Battery 3, 3T, 10, and 10T test was conducted at the manufacturers recommended mounting distances with a minimum of 6" between vertically stacked units, 1" horizontally between IQ Battery 3/3T, and 6" clearance on the sides for IQ Battery 10/10T. The IQ Battery datasheets detail that they have been certified to UL9540A.

How much space do you need for a battery system?

Spaces about battery systems shall comply with 110.26. Working space shall be measured from the edge of the battery cabinet, racks, or trays. For battery racks, there shall be a minimum clearance of 25 mm (1 in.) between a cell container and any wall or structure on the side not requiring access for maintenance.

How far should a battery be from a wall?

The distance to the wall for racks and cabinets is 3 100 mm for a better placement of connections and better access for cleaning. Batteries must be assessable easy that service with normal insulated tools can be made (pr EN 50272-2).

What is the minimum clearance for a battery rack?

For battery racks, there shall be a minimum clearance of 25 mm (1 in.) between a cell container and any wall or structure on the side not requiring access for maintenance. Battery stands shall be permitted to contact adjacent walls or structures, provided that the battery shelf has a free air space for not less than 90 percent of its length.



Distance between batteries in the battery cabinet

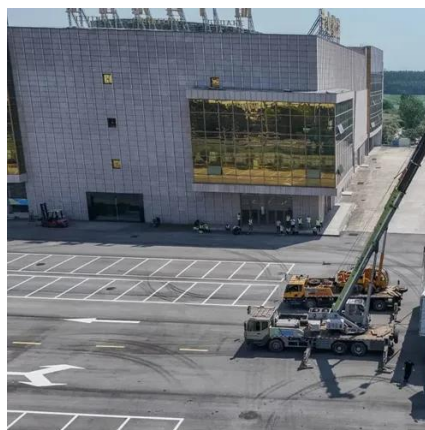


[Checklist: Venting Clearance and Code Rules for ...](#)

According to NFPA 855, individual energy storage system units should generally be separated by at least three feet, unless the ...

[Spaces About Battery Systems , UpCodes](#)

Spaces designated for battery systems must adhere to specific regulations regarding working space, which is measured from the battery cabinet's edge. For battery racks, a minimum ...



Checklist: Venting Clearance and Code Rules for Battery Cabinets

According to NFPA 855, individual energy storage system units should generally be separated by at least three feet, unless the manufacturer has conducted large-scale fire testing ...

Designing Industrial Battery Rooms: Fundamentals and Standards

Industrial battery rooms require careful design to ensure safety, compliance, and operational efficiency. This article covers key design



considerations and relevant standards.

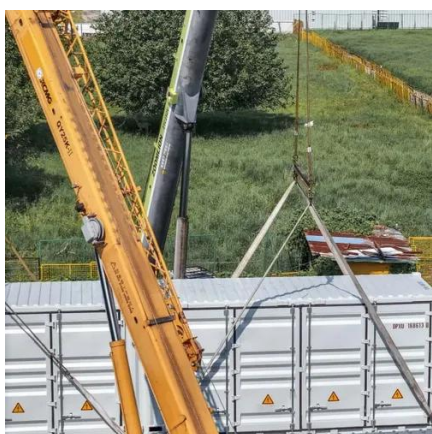


480.9 Battery Locations.

Working space shall be measured from the edge of the battery cabinet, racks, or trays. For battery racks, there shall be a minimum clearance of ...

The distance between battery cabinets

Enphase IQ Battery 3, 3T, 10, and 10T test was conducted at the manufacturers recommended mounting distances with a minimum of 6" between vertically stacked units, 1" horizontally ...



EG4 BESS Spacing

The following document clarifies BESS (Battery Energy Storage System) spacing requirements for the EG4 WallMount batteries / rack mount six slot battery cabinet installations.



What is the appropriate safety distance between battery ...

Batteries themselves should be mounted on stands or in cabinets, designed to provide good access, particularly to prevent personnel responsible for servicing from having to

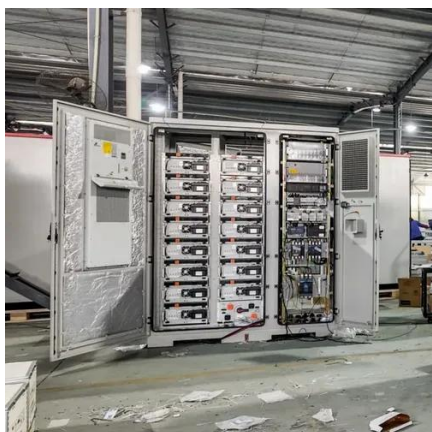


480.9 Battery Locations.

Working space shall be measured from the edge of the battery cabinet, racks, or trays. For battery racks, there shall be a minimum clearance of 25 mm (1 in.) between a cell container and any ...

IFC Mounting Requirements for IQ Battery Systems

Enphase IQ Battery 3, 3T, 10, and 10T test was conducted at the manufacturers recommended mounting distances with a minimum of 6" between vertically stacked units, 1" ...



BatteryRoomVentilationInstallation.PDF

Batteries must be secured against dropping items and dirt. It is necessary to have an insulation or a distance of at least 10mm for 3 24 V potential difference to avoid parasitic currents. The ...



2018 International Solar Energy Provisions (ISEP)

Working space shall be measured from the edge of the battery cabinet, racks, or trays. For battery racks, there shall be a minimum clearance of 25 mm (1 in.) between a cell container and any ...





Contact Us

For inquiries, pricing, or partnerships:

<https://www.sccd-sk.eu>

Phone: +32 2 808 71 94

Email: info@sccd-sk.eu

Scan QR code for WhatsApp.

