



Do tool lithium batteries need to be balanced





Overview

Proper lithium battery pack balancing before and during installation is essential for safety, longevity, and optimal performance. Following steps like parallel balancing, using a reliable BMS, and conducting regular maintenance charges prevent over or undercharging and maintain.

Proper lithium battery pack balancing before and during installation is essential for safety, longevity, and optimal performance. Following steps like parallel balancing, using a reliable BMS, and conducting regular maintenance charges prevent over or undercharging and maintain.

Battery balancing is the process of equalizing the charge across individual cells in a battery or individual batteries in battery groups to ensure uniform voltage levels, or state of charge (SOC). This process helps prevent overcharging or undercharging of cells, which can lead to performance.

Effective battery management is crucial for maximizing the performance and lifespan of lithium batteries. This involves monitoring and controlling various parameters such as voltage, current, and temperature. A critical aspect of battery management is ensuring that all cells within a battery pack.

It's important to know how to balance a lithium battery pack. Building a lithium-ion battery pack is an exciting and fulfilling process. In fact, it's so exciting that you just may overlook some critical steps. If you built a lithium-ion battery and its capacity is not what you expect, then you.

However, beneath those surface metrics lies a critical process that influences a battery's long-term performance: battery balancing. Whether you're an OEM battery integrator, an off-grid installer, or a C&I energy storage buyer, you must understand about battery balancing. This deep-dive article.

Does your Milwaukee M18 battery pack only have 3 bars when fully charged?

That's usually a sign that the cells are not balanced. All lithium-ion cells need to be at the same voltage or the battery pack can't fully charge. This cell rebalancing procedure will also work for DeWalt, Makita, or . more.



Proper lithium battery pack balancing before and during installation is essential for safety, longevity, and optimal performance. Following steps like parallel balancing, using a reliable BMS, and conducting regular maintenance charges prevent over or undercharging and maintain cell health. Fasta.



Do tool lithium batteries need to be balanced



[Techniques for Balancing Batteries- Improve ...](#)

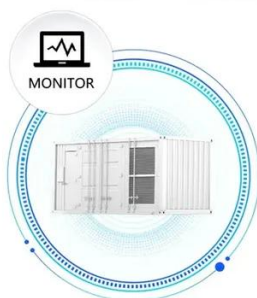
In this article, we'll walk you through what battery balancing is, why it's important, common signs your batteries need balancing, and step-by-step ...

[Do Lithium Batteries Need to Be Balanced?](#)

Balancing is a critical aspect of lithium battery management, necessary for ensuring safe, efficient, and reliable operation. By equalizing cell voltages, balancing helps prevent ...



SUPPORT REAL-TIME ONLINE
MONITORING OF SYSTEM STATUS



[How To Balance A Lithium Batteries: Top and Bottom Balancing](#)

A balanced battery pack is critical to getting the most capacity out of your pack, read along to learn how to top and bottom balance a lithium battery pack.

[LiFePO4 Cell Balancing: How It Works and Why It ...](#)

Balancing matches cells by capacity and voltage, cycling them to keep voltages equal at all states of charge. It occurs before, during, and after ...

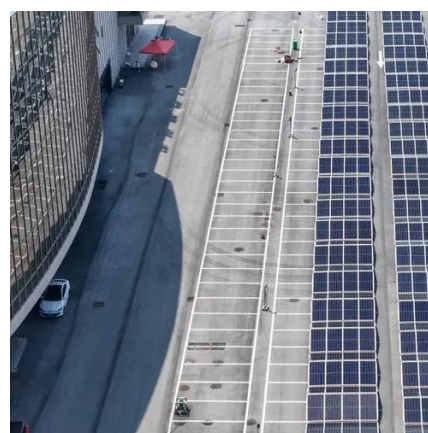


[Battery Balancing: Techniques, Benefits, and How ...](#)

Not all battery chemistries require balancing, but balancing is essential for lithium-ion batteries and other multi-cell systems where consistent charge ...

[LiFePO4 Cell Balancing: How It Works and Why It Matters](#)

Balancing matches cells by capacity and voltage, cycling them to keep voltages equal at all states of charge. It occurs before, during, and after assembly and continues throughout the battery's ...



What Is Battery Balancing and How Does It Affect Pack Longevity?

This deep-dive article explains what battery balancing is, why it matters, and how it directly influence the longevity, safety, and performance of lithium battery packs.



[Battery Balancer Guide: Boost Battery ...](#)

Discover how battery balancers improve lithium battery performance, lifespan, and safety. Learn types, functions, and tips to ...



[Battery Balancer Guide: Boost Battery Performance & Lifespan](#)

Discover how battery balancers improve lithium battery performance, lifespan, and safety. Learn types, functions, and tips to choose the right balancer.



[A complete analysis of lithium battery balancing technology](#)

When the battery voltage difference reaches more than 20mV, balancing is required, especially in the range of 20-50mV, the balancing effect is best. Correct use of ...



[How To Balance A Lithium Batteries: Top and Bottom Balancing](#)

What Is Lithium-Ion Cell Balancing?How to Balance Lithium BatteriesWhat Is Top Balancing?What Is Bottom Balancing?How to Bottom Balance A Lithium Battery PackHow to Top Balance A Lithium Battery PackCell balancing is the act of making sure all cells in a battery are at the same voltage. When building a lithium-ion battery, the process involves connecting many cells together to form a singular power source. In ideal circumstances,





brand-new cells will all be at the same voltage level. This, however, is not always the ca...See more on cellsaviors kmdpower

What Is Battery Balancing and How Does It Affect Pack Longevity?

This deep-dive article explains what battery balancing is, why it matters, and how it directly influence the longevity, safety, and performance of lithium battery packs.

How to Balance Your Lithium Battery Pack During Installation

Balancing a lithium battery pack during installation is critical to ensure all cells have the same voltage, which prevents damage and optimizes battery life and performance.



Balancing Power Tool Battery Packs

All lithium-ion cells need to be at the same voltage or the battery pack can't fully charge. This cell rebalancing procedure will also ...

[Battery Balancing: Techniques, Benefits, and How It Works](#)

Not all battery chemistries require balancing, but balancing is essential for lithium-ion batteries and other multi-cell systems where consistent charge across cells is crucial for performance ...



Balancing Power Tool Battery Packs

All lithium-ion cells need to be at the same voltage or the battery pack can't fully charge. This cell rebalancing procedure will also work for DeWalt, Makita, or any brand of power tool

Techniques for Balancing Batteries- Improve Battery Life & Safety

In this article, we'll walk you through what battery balancing is, why it's important, common signs your batteries need balancing, and step-by-step methods to do it properly.



[A complete analysis of lithium battery balancing ...](#)

When the battery voltage difference reaches more than 20mV, balancing is required, especially in the range of 20-50mV, the ...



Contact Us

For inquiries, pricing, or partnerships:

<https://www.sccd-sk.eu>

Phone: +32 2 808 71 94

Email: info@sccd-sk.eu

Scan QR code for WhatsApp.

