



# Does North Korea s integrated 5G base station cost electricity





## Overview

---

How much energy does a 5G base station consume?

Because it is estimated that in 5G, the base station's density is expected to exceed 40–50 BSs/ Km<sup>2</sup> . The energy consumption of the 5G network is driving attention and many world-leading network operators have launched alerts about the increased power consumption of the 5G mobile infrastructure .

What is energy in North Korea?

Pyongchon Thermal Power Station generates electricity for central Pyongyang. Energy in North Korea describes energy and electricity production, consumption and import in North Korea. Primary energy use in North Korea was 224 TWh and 9 TWh per million people in 2009.

Is 5G consuming more energy?

The energy consumption of the 5G network is driving attention and many world-leading network operators have launched alerts about the increased power consumption of the 5G mobile infrastructure . The access network is a most energy-intensive component (i.e., 60%–80%) than the other components of the mobile network.

Does North Korea have a power shortage?

Preface North Korea suffers from chronic energy shortages. Rolling blackouts are common, even in the nation's capital, while some of the poorest citizens receive state-provided electricity only once a year.



## Does North Korea's integrated 5G base station cost electricity

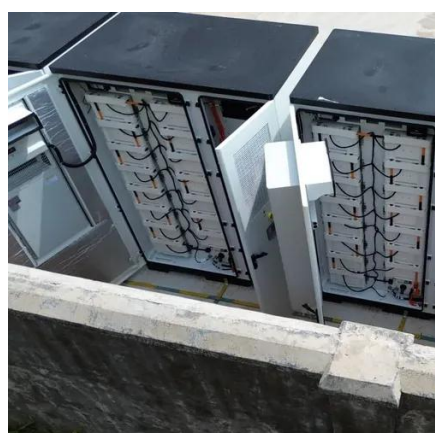


### Power consumption analysis of access network in 5G mobile ...

Energy consumption growth of the fifth-generation (5G) mobile network infrastructure can be significant due to the increased traffic demand for a massive number of ...

### What is 5G Energy Consumption?

Increased consumption has raised the importance of 5G energy savings for operators and service providers who already dedicate a considerable portion their OPEX budgets to power.



### [How Much Power Does 5G Base Station Consume?](#)

Have you ever wondered how much energy our hyper-connected world is consuming? 5G base stations, the backbone of next-gen connectivity, now draw 3-4 times ...

### North Korea's Energy Sector

North Korea suffers from chronic energy shortages. Rolling blackouts are common, even in the nation's capital, while some of the poorest citizens receive state-provided ...



## Energy in North Korea

According to statistics compiled by the South Korean agency, Statistics Korea, based on International Energy Agency (IEA) data, per capita electricity consumption fell from its peak in ...



## Comparison of Power Consumption Models for 5G Cellular Network Base

The main power consuming components of a base station are categorized in the same manner by almost all the discussed models, though the parameters which scale the ...



## North Korea's Energy Sector

North Korea suffers from chronic energy shortages. Rolling blackouts are common, even in the nation's capital, while some of the ...





## Energy Efficiency for 5G and Beyond 5G: Potential, Limitations, ...

Energy efficiency assumes it is of paramount importance for both User Equipment (UE) to achieve battery prologue and base stations to achieve savings in power and operation ...



### Why does 5g base station consume so much power and how to ...

According to the above calculation, the total electricity cost of 5G base stations will reach about 10 times that of 4G. Moreover, we know that 5G consumes a lot of power and ...

### Comparison of Power Consumption Models for 5G Cellular ...

The main power consuming components of a base station are categorized in the same manner by almost all the discussed models, though the parameters which scale the ...

#### DETAILS AND PACKAGING



- 1 USER MANUAL PDF
- 2 RJ45 Cable For RS485/CAN
- 3 Battery in Parallel Cables
- 4 RJ45 TO USB Monitor Cable
- 5 M5 Terminal\*4



### Energy Management of Base Station in 5G and B5G: Revisited

Therefore, high density of these stations is required for actual 5G deployment, that leads to huge power consumption. It is reported that Radio Access Network (RAN) consumes almost 70% of ...



## Why does 5g base station consume so much ...

According to the above calculation, the total electricity cost of 5G base stations will reach about 10 times that of 4G. Moreover, we know ...



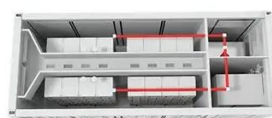
- 50KW/100KWH
- HIGHER POWER OUTPUT IN OFF-GRID MODE
- CONVENIENT OPERATION & MAINTENANCE
- PRE-WIRED

## North Korea's Energy Sector

North Korea suffers from chronic energy shortages. Rolling blackouts are common, even in the nation's capital, while some of the ...

## North Korea's Energy Sector

North Korea suffers from chronic energy shortages. Rolling blackouts are common, even in the nation's capital, while some of the poorest citizens receive state-provided ...



## Energy Efficiency for 5G and Beyond 5G: Potential, ...

Energy efficiency assumes it is of paramount importance for both User Equipment (UE) to achieve battery prologue and base stations ...





## Contact Us

---

For inquiries, pricing, or partnerships:

<https://www.sccd-sk.eu>

Phone: +32 2 808 71 94

Email: [info@sccd-sk.eu](mailto:info@sccd-sk.eu)

Scan QR code for WhatsApp.

