



# Does the battery cabinet need a load-bearing bracket





## Overview

---

Wall-mounted batteries use brackets to secure vertically or horizontally on walls, requiring load-bearing surfaces. Rack-mounted units slide into 19-inch racks, needing dedicated floor space but enabling modular stacking.

Wall-mounted batteries use brackets to secure vertically or horizontally on walls, requiring load-bearing surfaces. Rack-mounted units slide into 19-inch racks, needing dedicated floor space but enabling modular stacking.

Let's start with a reality check: if you're installing energy storage cabinets, you're probably not daydreaming about load-bearing calculations. But here's the kicker—getting the support requirements wrong could turn your shiny new battery system into a \$100,000 Jenga tower. Whether you're an.

Wall-mounted and rack-mounted batteries differ in installation methods and use cases. Wall-mounted units save floor space by attaching directly to walls, ideal for residential or compact setups. Rack-mounted systems organize batteries in standardized racks, offering scalability for industrial or.

The PWRcell™ Battery Cabinet is a Type 3R smart battery enclosure that allows for a range of storage configurations to suit any need. DC-couple to Generac PWRzone solar or PWRgenerator. No other smart battery offers the power and flexibility of PWRcell. The PWRcell Battery Cabinet allows system.

Wall mount and rack mount battery systems refer to the physical installation and housing of lithium batteries. A wall mount rack is an enclosure that can be compact that is directly attached to a vertical surface. They are generally used in homes and small offices where space is a constraint, hence.

Electric shock may be caused if ground cables from the load devices are not connected. Connect the ground cables to the specified places. Grounding impedance should be less than 10 ohms. CAUTION Select the electric wire size of which the rated current is equal to or over that of the battery cabinet.

For instance, if a battery, rack and charger are required the system can be designed using a 2 step rack with the charger mounted above, or with a 2-tier rack with the charger mounted to the side of the rack. Depending on the equipment



being installed, one solution may be a more logical choice than. How to install a battery storage cabinet?

Mounting mechanism - they vary depending on whether the battery storage cabinet is a pole mount, wall mount, or floor mount. The mechanism allows you to install the battery box enclosure appropriately. Racks - these systems support batteries in the enclosure. Ideally, the battery rack should be strong.

How do I choose a lithium-ion battery storage cabinet?

When selecting a lithium-ion battery storage cabinet, consider the following:  
Capacity Requirements: Ensure the cabinet accommodates the quantity and size of batteries used in your workplace. Regulatory Compliance: Choose a cabinet that meets safety standards for Class 9 Dangerous Goods.

What should a battery cabinet have?

Handles - provides an easy way to handle the battery cabinet. Battery holding brackets - they ensure the battery is always in a fixed position (no movement). Cooling plates - some have cooling plates that help to control the enclosure temperature. Insulation system - insulation is also a safety measure a battery cabinet should have.

How much weight can a battery rack hold?

Load-bearing capacity ranges from 100 lbs to 1,000+ lbs per shelf, accommodating lithium-ion, lead-acid, or nickel-based batteries. Grounding kits and seismic bracing are critical for compliance with UL 1973 and IEC 62619 standards. Which Safety Standards Govern Battery Rack Installation?



## Does the battery cabinet need a load-bearing bracket

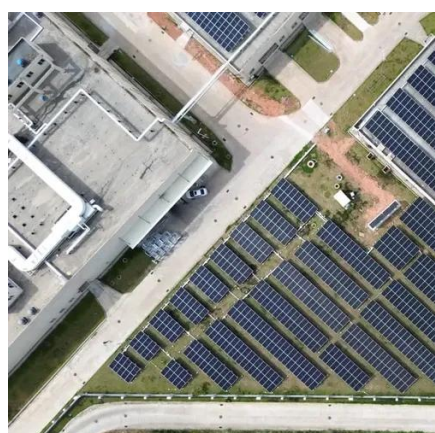


### [The Ultimate Guide to Lithium-Ion Battery Storage ...](#)

Discover the importance of lithium-ion battery storage cabinets for safe battery storage and charging. Learn best practices, key ...

### **Energy Storage Cabinet Support Requirements: What You Need ...**

Let's start with a reality check: if you're installing energy storage cabinets, you're probably not daydreaming about load-bearing calculations. But here's the kicker--getting the support ...



### [Wall-Mounted Vs Rack-Mounted Battery--Which To Choose?](#)

Wall-mounted batteries use brackets to secure vertically or horizontally on walls, requiring load-bearing surfaces. Rack-mounted units slide into 19-inch racks, needing ...

### [SolaHD S4K-D External Battery Cabinet QIG Manual PDF](#)

Use the screws to attach the brackets to the EBC through the installation holes. Put the EBC on the guide rack rails and completely push into the rack.



Use M5 screws provided to secure the ...



## BATTERY CABINET

An existing PWRcell Battery Cabinet can be upgraded with additional modules. Use the graphic below and the chart on the back of this sheet to understand what components you need for ...



## [Complete Guide for Battery Enclosure](#)

Everyone wants a safe, durable, high quality and secure battery enclosure. However, finding the right information about these ...



## [Wall Mount or Rack Mount? A Complete Guide to ...](#)

Rack mount regularly with the horizontal arrangement of the battery modules mounted in an open or closed wall rackmount cabinet. ...





## Tips for Designing Battery Cabinets/Enclosures , SBS Battery

There may be multiple ways to configure the cabinet, so consider all possible options. For instance, if a battery, rack and charger are required the system can be designed using a 2 ...



## Complete Guide for Battery Enclosure

Everyone wants a safe, durable, high quality and secure battery enclosure. However, finding the right information about these battery boxes or cabinet is always a ...

### **U-ENM00044**

Electric shock may be caused if ground cables from the load devices are not connected. Connect the ground cables to the specified places. Grounding impedance should be less than 10 ohms. ...



## **What Is a Battery Rack and Why Is It Essential for Energy Storage?**

Battery racks organize and secure batteries in large-scale systems, optimizing space and improving thermal management. By preventing physical damage and ensuring proper ...



## [The Ultimate Guide to Lithium-Ion Battery Storage Cabinets](#)

Discover the importance of lithium-ion battery storage cabinets for safe battery storage and charging. Learn best practices, key features, and how to choose the right battery ...



## [Wall Mount or Rack Mount? A Complete Guide to Battery ...](#)

Rack mount regularly with the horizontal arrangement of the battery modules mounted in an open or closed wall rackmount cabinet. This is useful for heavy scale industries ...



## Contact Us

---

For inquiries, pricing, or partnerships:

<https://www.sccd-sk.eu>

Phone: +32 2 808 71 94

Email: [info@sccd-sk.eu](mailto:info@sccd-sk.eu)

Scan QR code for WhatsApp.

