



Does the orientation of solar panels affect voltage



✓ 50KW/100KWH

✓ HIGHER POWER OUTPUT
IN OFF-GRID MODE

✓ CONVENIENT OPERATION
& MAINTENANCE

✓ PRE-WIRED





Does the orientation of solar panels affect voltage

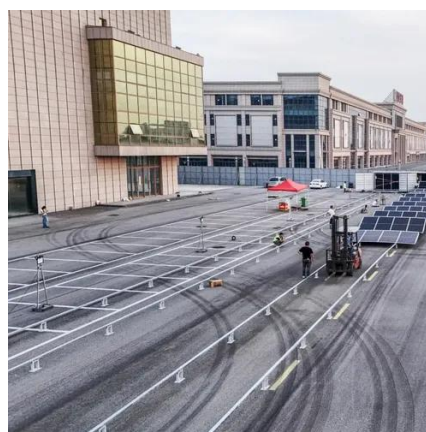


[How to Find the Best Orientation and Angle of ...](#)

Solar panel cells only collect a specific wavelength during absorbing radiant energy from the sun. The absorbed radiant energy is then converted into ...

Solar Panel Placement: How Shade and Orientation Affect Energy ...

To maximize your solar power, you need to understand how solar panel placement orientation works. Where you position your panels makes a huge difference in how much ...



[What's the Best Angle for Solar Panels?](#)

South-facing solar panel systems almost always generate ...



How Does the Tilt and Orientation of a Solar Panel Affect Its Energy

An incorrect orientation or a tilt that is too steep or too shallow can significantly reduce the amount of direct sunlight the panel receives, thereby



lowering its overall energy ...



[Solar Panel Direction & Orientation: 2025](#)

...

Discover the optimal direction and angle for solar panels to maximize energy output. Complete guide with calculations, tools, and ...

Solar Panel Orientation and Tilt

When panels face the sun optimally and have the right tilt angle, they capture more sunlight, resulting in higher electricity ...



Orientation and Tilt of Solar Panels - How They Affect Performance

If your solar panels are poorly oriented or set at the wrong tilt, the losses can be substantial. For example, panels facing directly east or west instead of south may lose 10% to ...



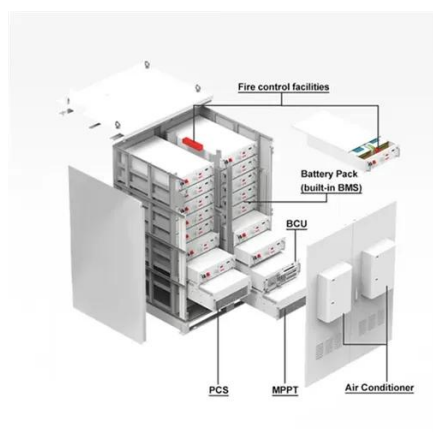
What's the Best Angle for Solar Panels? , EnergySage

South-facing solar panel systems almost always generate the most electricity, but east-west roofs can work well for solar, too. The direction is more important than the angle. ...



Solar panel orientation

These panels collect more energy when they face due south, but the energy is more useful if it comes later in the day. This turn allows the solar panels to produce more electricity at the ...



How does the angle and orientation of solar panels impact their energy

Impact on Energy Output: A tilt between 20 and 30 degrees often results in the highest energy output. Tilting the panels too much can lead to reduced output due to ...



Commercial and Industrial ESS

Air Cooling / Liquid Cooling

- Budget Friendly Solution
- Renewable Energy Integration
- Modular Design for Flexible Expansion



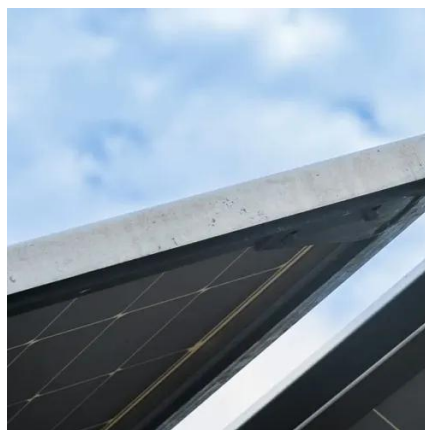
How to Find the Best Orientation and Angle of Solar Panels?

Solar panel cells only collect a specific wavelength during absorbing radiant energy from the sun. The absorbed radiant energy is then converted into electricity through a process called the ...



Solar Panel Orientation and Tilt

When panels face the sun optimally and have the right tilt angle, they capture more sunlight, resulting in higher electricity generation. This heightened energy production reduces reliance ...



[Solar Panel Direction & Orientation: 2025 Complete Guide](#)

Discover the optimal direction and angle for solar panels to maximize energy output. Complete guide with calculations, tools, and location-specific recommendations for 2025.

Solar panel orientation

These panels collect more energy when they face due south, but the energy is more useful if it comes later in the day. This turn allows the solar panels ...



[Solar Panel Orientation: Does It Really Affect Performance?](#)

One of the most significant factors influencing solar panel performance is orientation. Whether you're installing panels on your rooftop, a ground-mounted system, or a commercial building, ...



Solar Panel Orientation: Does It Really Affect ...

One of the most significant factors influencing solar panel performance is orientation. Whether you're installing panels on your rooftop, a ground ...



How does the angle and orientation of solar panels ...

Impact on Energy Output: A tilt between 20 and 30 degrees often results in the highest energy output. Tilting the panels too much can ...



How Does the Tilt and Orientation of a Solar Panel ...

An incorrect orientation or a tilt that is too steep or too shallow can significantly reduce the amount of direct sunlight the panel receives, ...



Solar Panel Placement: How Shade and ...

To maximize your solar power, you need to understand how solar panel placement orientation works. Where you position your panels ...



Contact Us

For inquiries, pricing, or partnerships:

<https://www.sccd-sk.eu>

Phone: +32 2 808 71 94

Email: info@sccd-sk.eu

Scan QR code for WhatsApp.

