



Does the solar panel 35x45 have 50 watts





Overview

For a solar panel measuring 45×35 cm, the wattage typically ranges between 50 to 70 watts. The exact wattage can fluctuate based upon several influencing factors. To fully appreciate the potential power that a panel could yield, it is essential to consider the type of photovoltaic.

For a solar panel measuring 45×35 cm, the wattage typically ranges between 50 to 70 watts. The exact wattage can fluctuate based upon several influencing factors. To fully appreciate the potential power that a panel could yield, it is essential to consider the type of photovoltaic.

The wattage output of a solar panel is one of the most critical specifications that determines its efficiency and effectiveness in converting sunlight into electricity. Wattage signifies the rate of energy transfer, and in the context of solar panels, it reflects how much power the panel can.

50 watt solar panel is a good way to start your solar power journey, This is going to be a complete guide about 50-watt solar panels, it's specs, what can it power, how much power they produce, and much more. in specs normally there are a few things to consider, Max power output (Watts), Optimum.

Solar panel size is measured in watts (W) and indicates how much electricity the panel can produce under standard test conditions. Here's the key distinction every homeowner should understand: Most residential solar panels in 2025 come in three main configurations: The most common choice for.

What are 50-watt solar panels?

A 50-watt solar panel is a solar photovoltaic (PV) panel designed to generate electrical energy from sunlight. These panels are relatively small and often used when only a modest amount of power is needed. As a comparison, businesses or large residential homes prefer.

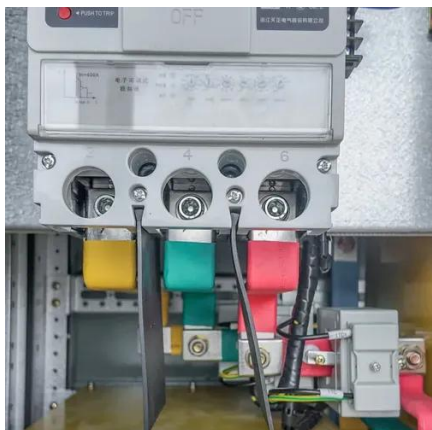
Wattage refers to the amount of electrical power a solar panel can produce under standard test conditions (STC), which simulate a bright sunny day with optimal solar irradiance (1,000 W/m²), a cell temperature of 25°C, and clean panels. In simpler terms, a panel's wattage rating tells you its.



It highlights that selecting the right solar panel dimensions and wattage is crucial for maximizing power output and efficiency, as evidenced by discussions on the various panel types, their dimensions, and how they align with energy consumption and roof configurations. As homeowners increasingly.



Does the solar panel 35x45 have 50 watts



[Detailed Guide to Solar Panel Size & Dimensions](#)

Choosing the proper system is not only about the solar panel dimensions. You should also consider wattage, number of cells, layout possibilities, and energy consumption. ...

[Solar Panel Wattage Explained: How Many Watts Do You Need?](#)

This guide will explain solar panel wattage clearly, with real-life examples and simple calculations anyone can follow. Whether you're a homeowner exploring solar energy or a ...



Understanding Solar Panel Sizes and Wattage: A Complete Tutorial

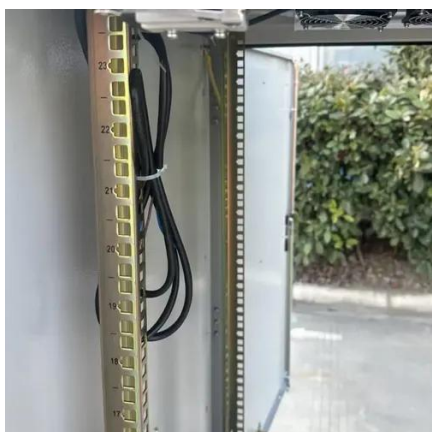
When considering solar panel sizes and wattage, you'll typically find options ranging from 250 to 400 watts. Opting for higher wattage units can be a game-changer, ...

[50 Watt Solar Panels Technical Specs & Installation](#)

A 50-watt solar panel is a solar photovoltaic (PV) panel designed to generate electrical energy from sunlight. These panels are relatively small and



often used when only a ...



[50 watt Solar Panel: The Ultimate Guide \(What Can It Power?\)](#)

In the real world, on average, a 50-watt solar panel will produce about 200 watts of DC power output or 16 amps @ 12 volts per day. Considering 5 hours of peak sunlight.

[Detailed Guide to Solar Panel Size & Dimensions](#)

Choosing the proper system is not only about the solar panel dimensions. You should also consider wattage, number of cells, layout ...



[What Size Are Solar Panels and How Much Power Do They ...](#)

The power output of a solar panel is directly linked to its physical size and the efficiency of the cells inside, with the rating measured in watts (W). A larger panel, such as a ...





[Solar Panel Wattage Explained: How Many Watts ...](#)

This guide will explain solar panel wattage clearly, with real-life examples and simple calculations anyone can follow. Whether you're a ...



[50 watt Solar Panel: The Ultimate Guide \(What Can It Power?\)](#)

The most common residential solar panel measures approximately 65" x 39" x 1.5" (5.4 feet by 3.25 feet) and produces 350-450 watts. This is known as a 60-cell panel ...

[Standard Solar Panel Sizes And Wattages \(100W ...](#)

To bridge that gap of very useful knowledge needed, we have compared and averaged the sizes of 100-watt to 500-watt solar panels available on the ...



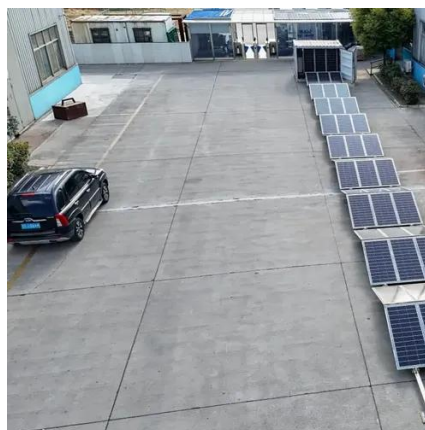
[How many watts are 45x35 solar panels, NenPower](#)

For a solar panel measuring 45x35 cm, the wattage typically ranges between 50 to 70 watts. The exact wattage can fluctuate based upon several influencing factors. To fully ...



[Solar Panel Wattage & Output Explained](#)

Most residential solar panels in 2025 are rated between 350W and 480W, while commercial modules can exceed 600W. How do manufacturers determine wattage? They test ...



[Solar Panel Size & Dimensions Guide 2025 Complete Specs](#)

The most common residential solar panel measures approximately 65" x 39" x 1.5" (5.4 feet by 3.25 feet) and produces 350-450 watts. This is known as a 60-cell panel ...

[Standard Solar Panel Sizes And Wattages \(100W-500W ...](#)

To bridge that gap of very useful knowledge needed, we have compared and averaged the sizes of 100-watt to 500-watt solar panels available on the market. The goal here is to get to the ...



[Understanding Solar Panel Sizes and Wattage: A ...](#)

When considering solar panel sizes and wattage, you'll typically find options ranging from 250 to 400 watts. Opting for higher ...



Contact Us

For inquiries, pricing, or partnerships:

<https://www.sccd-sk.eu>

Phone: +32 2 808 71 94

Email: info@sccd-sk.eu

Scan QR code for WhatsApp.

