



# Does wired communication require a base station





## Overview

---

In the area of wireless computer networking, a base station is a radio receiver/transmitter that serves as the hub of the local wireless network, and may also be the gateway between a wired network and the wireless network. It typically consists of a low-power transmitter and .

Over large distances, the signals must be relayed by a communication network comprising base stations and often supported by a wired network. The power of a base station varies (typically between 10 and 50 watts) depending on the area that needs to be covered and the.

Over large distances, the signals must be relayed by a communication network comprising base stations and often supported by a wired network. The power of a base station varies (typically between 10 and 50 watts) depending on the area that needs to be covered and the.

Base stations are required to enable mobile phone communication, including calls and data transfer. They consist of different electronic components and antennas and can be located on masts, on rooftops, or on the outside or inside of buildings. Base stations emit radiofrequency electromagnetic.

Base station (or base radio station, BS) is - according to the International Telecommunication Union 's (ITU) Radio Regulations (RR) [1] - a " land station in the land mobile service." A base station is called node B in 3G, eNB in LTE (4G), and gNB in 5G. The term is used in the context of mobile.

The present-day tele-space is incomplete without the base stations as these constitute an important part of the modern-day scheme of wireless communications. They are referred to as cell towers or cellular antennas. These types of objects are an inevitability since they serve the purpose of.

Base stations are the foundational elements that make this connectivity possible, acting as fixed points that bridge the gap between a mobile device's radio signal and the global wired network. They are communication hubs in a cellular network that ensure continuous service as users move throughout.

Mobile phones and other mobile devices require a network of base stations in order to function. The base station antennas transmit and receive RF (radio frequency) signals, or radio waves, to and from mobile phones near the base station. Without



these radio waves, mobile communications would not be.

From making a phone call in a busy city to streaming videos in remote villages, the ability to stay connected relies on one critical piece of infrastructure: the telecom base station. Often hidden in plain sight on rooftops or towers, base stations are the backbone of modern mobile networks. What.



## Does wired communication require a base station



### Base stations

Over large distances, the signals must be relayed by a communication network comprising base stations and often supported by a wired network. The power of a base station varies (typically ...

### [What is a Base Station? -- From Communication ...](#)

Simply put, a base station (BS) is a wireless transceiver device in a mobile communication network that provides wireless ...



### Base Stations

The present-day tele-space is incomplete without the base stations as these constitute an important part of the modern-day scheme ...

### Base Station Definition

A base station is a fixed wireless device that serves as a hub for other wireless devices and provides a bridge to another network. In a computer networking context, a base ...



## Base Station Definition

A base station is a fixed wireless device that serves as a hub for other wireless devices and provides a bridge to another network. In a ...



## Base station

OverviewComputer networkingLand surveyingWireless communicationsSee also

In the area of wireless computer networking, a base station is a radio receiver/transmitter that serves as the hub of the local wireless network, and may also be the gateway between a wired network and the wireless network. It typically consists of a low-power transmitter and wireless router.



## What is a base station?

Base stations are generally a transceiver, capable of ...



## What Is a Base Station? Definition and How It Works

Base stations are the foundational elements that make this connectivity possible, acting as fixed points that bridge the gap between a mobile device's radio signal and the ...

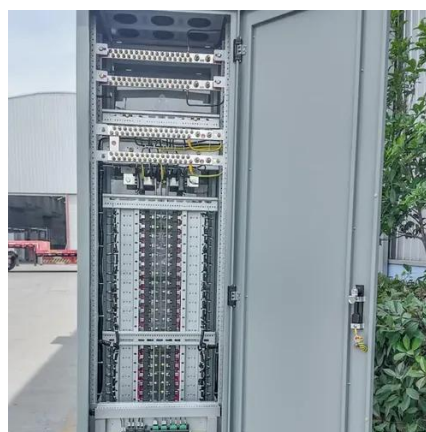


## What Does a Base Station Do and Why Is It Essential for ...

From making a phone call in a busy city to streaming videos in remote villages, the ability to stay connected relies on one critical piece of infrastructure: the telecom base station.

## What is a Base Station? -- From Communication Core to ...

Simply put, a base station (BS) is a wireless transceiver device in a mobile communication network that provides wireless coverage and communicates with mobile ...





## SI110: Wireless Networking

This problem doesn't really exist with wired networks, because we are so much better able to control what hosts are part of the network (simply by controlling physical access to rooms and ...



### What is a base station?

Base stations are generally a transceiver, capable of sending and receiving wireless signals; otherwise, if they only transmitted signals out, they would be considered a transmitter ...

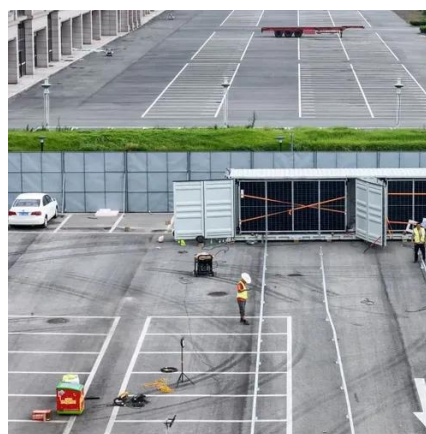


### Base stations and networks

Mobile phones and other mobile devices require a network of base stations in order to function. The base station antennas transmit and receive RF (radio frequency) signals, or radio waves, ...

### Base Stations

The present-day tele-space is incomplete without the base stations as these constitute an important part of the modern-day scheme of wireless communications. They are ...





## Base station

In the area of wireless computer networking, a base station is a radio receiver/transmitter that serves as the hub of the local wireless network, and may also be the gateway between a wired ...





## Contact Us

---

For inquiries, pricing, or partnerships:

<https://www.sccd-sk.eu>

Phone: +32 2 808 71 94

Email: [info@sccd-sk.eu](mailto:info@sccd-sk.eu)

Scan QR code for WhatsApp.

